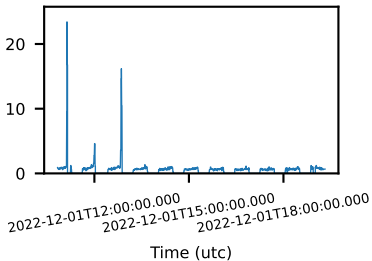
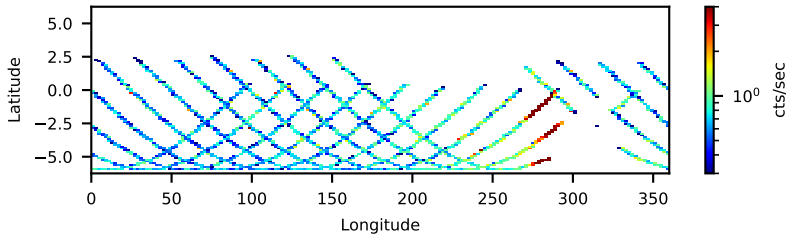


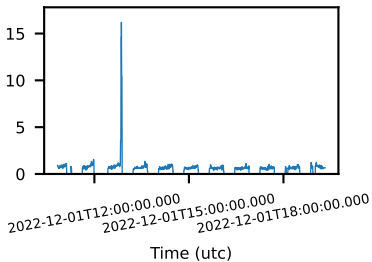
60-s bins



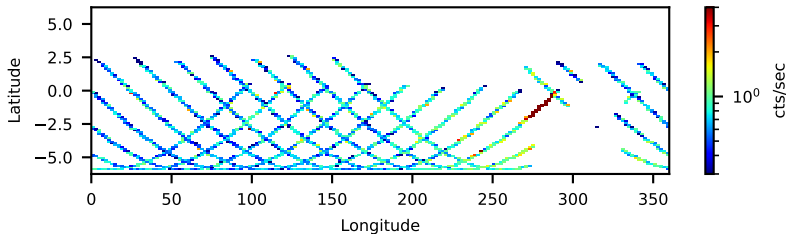
90801634002 FPMB: No SAA Filter 31.54-ks, 100%



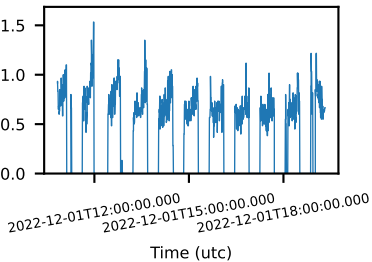
60-s bins



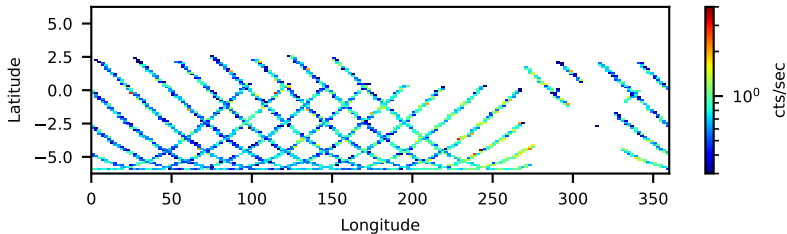
--saacalc=1 -saamode=OPTIMIZED --tentacle=no 30.91-ks, 98%



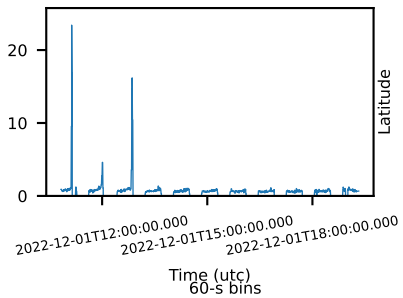
60-s bins



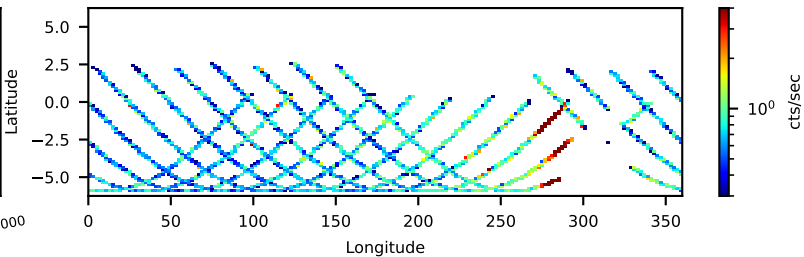
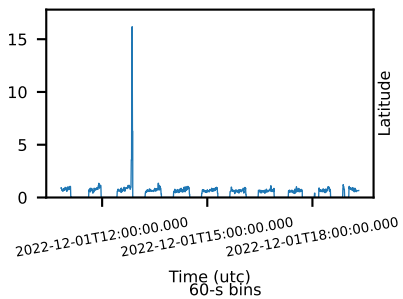
--saacalc=1 -saamode=OPTIMIZED --tentacle=yes 30.56-ks, 97%



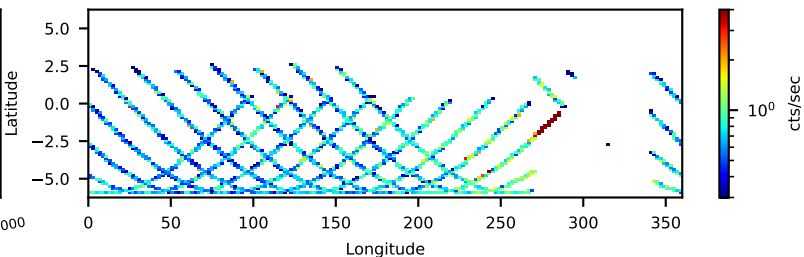
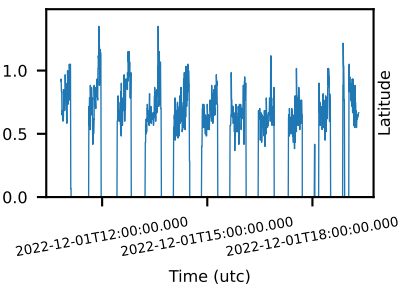
60-s bins



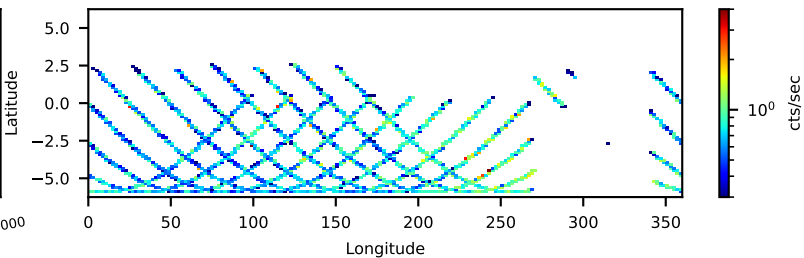
90801634002 FPMB: No SAA Filter 31.54-ks, 100%

Time (utc)  
60-s bins

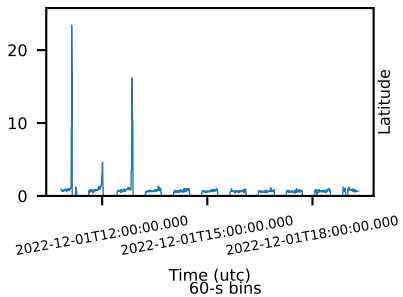
--saacalc=1 -saamode=STRICT --tentacle=no 29.57-ks, 94%

Time (utc)  
60-s bins

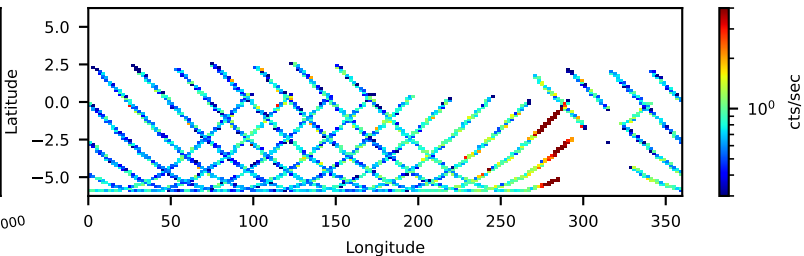
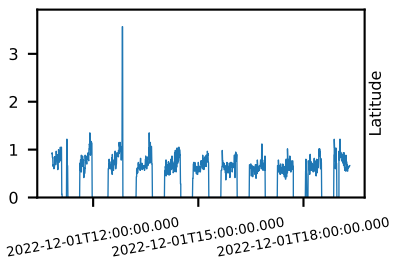
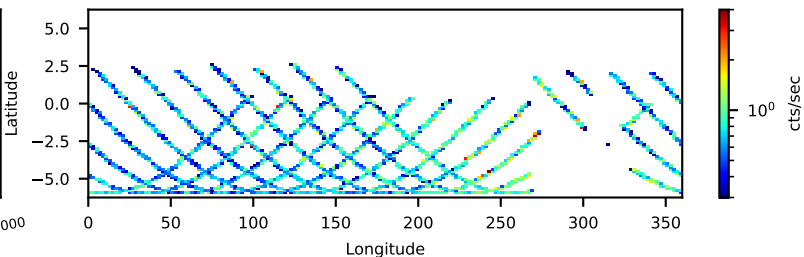
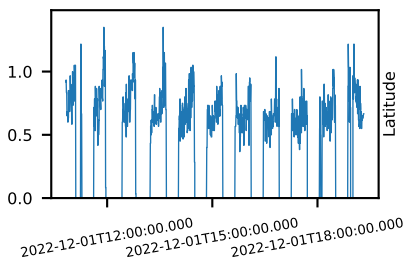
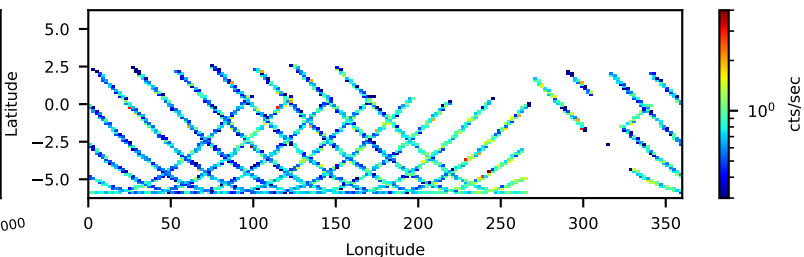
--saacalc=1 -saamode=STRICT --tentacle=yes 29.30-ks, 93%



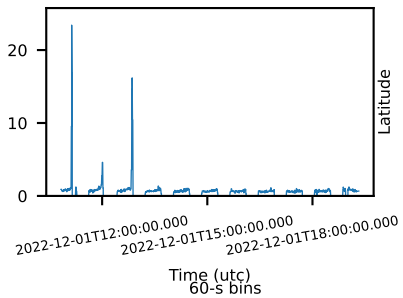
60-s bins



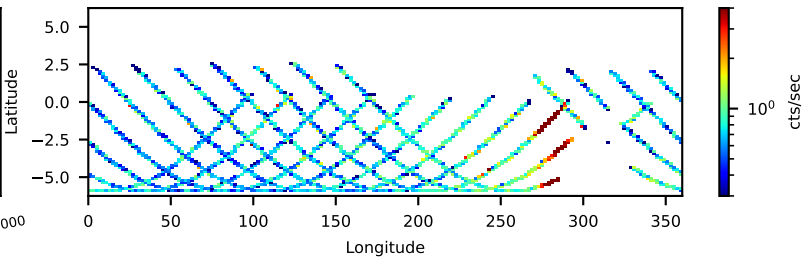
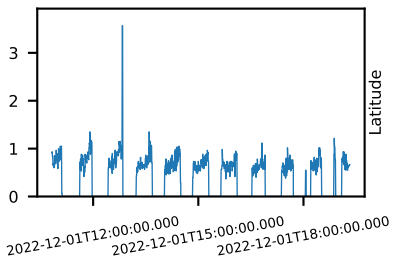
90801634002 FPMB: No SAA Filter 31.54-ks, 100%

Time (utc)  
60-s bins`--saacalc=2 -saamode=OPTIMIZED --tentacle=no` 30.62-ks, 97%Time (utc)  
60-s bins`--saacalc=2 -saamode=OPTIMIZED --tentacle=yes` 30.34-ks, 96%

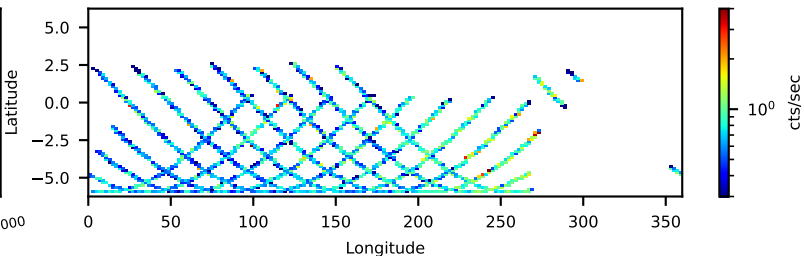
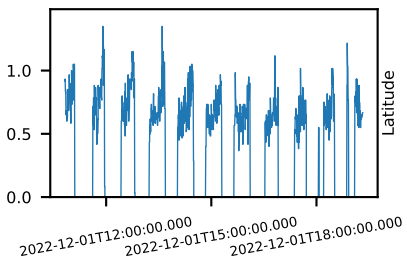
60-s bins



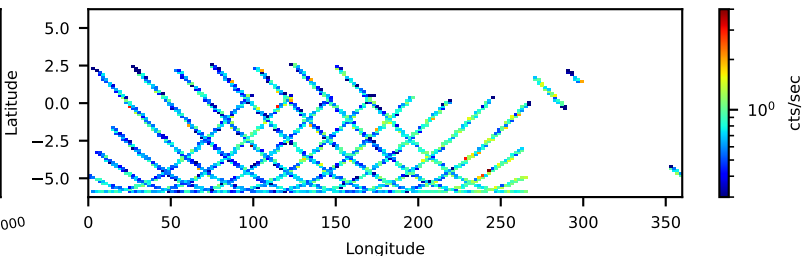
90801634002 FPMB: No SAA Filter 31.54-ks, 100%

Time (utc)  
60-s bins

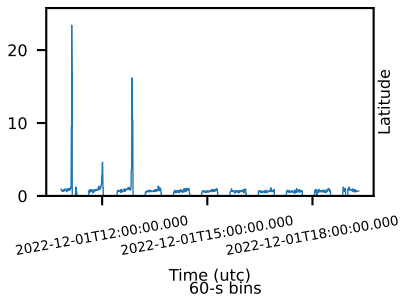
--saacalc=2 -saamode=STRICT --tentacle=no 27.93-ks, 89%

Time (utc)  
60-s bins

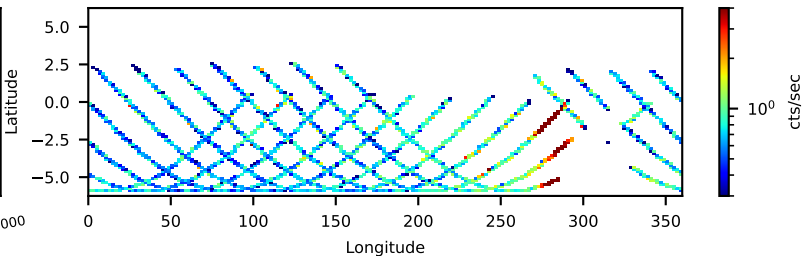
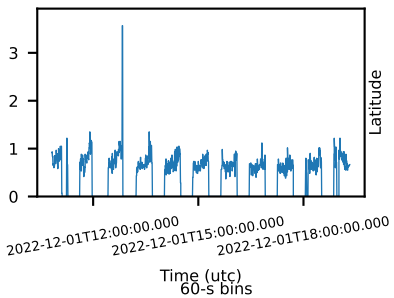
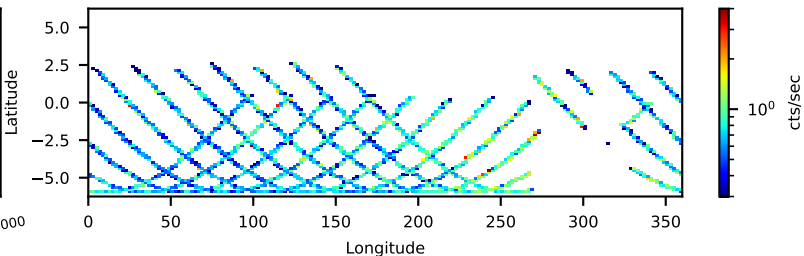
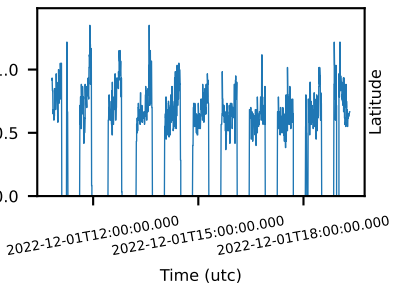
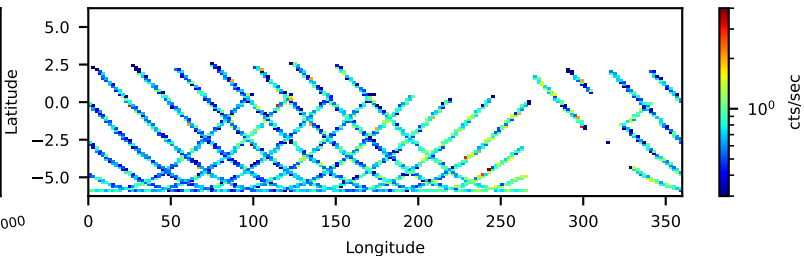
--saacalc=2 -saamode=STRICT --tentacle=yes 27.66-ks, 88%



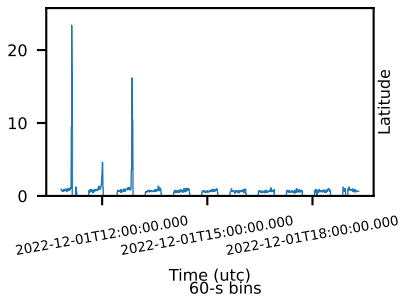
60-s bins



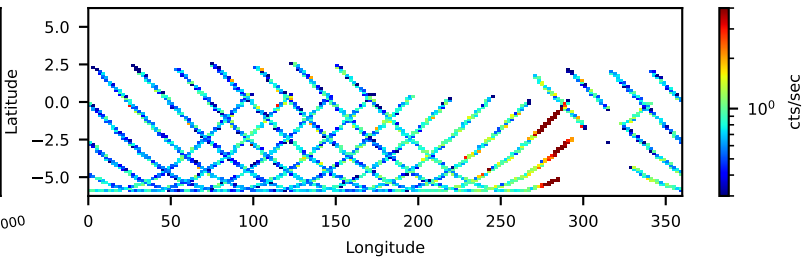
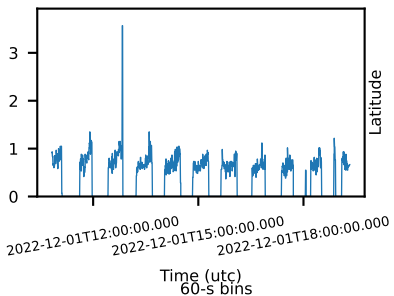
90801634002 FPMB: No SAA Filter 31.54-ks, 100%

Time (utc)  
60-s bins`--saacalc=3 --saamode=OPTIMIZED --tentacle=no` 30.62-ks, 97%Time (utc)  
60-s bins`--saacalc=3 --saamode=OPTIMIZED --tentacle=yes` 30.34-ks, 96%

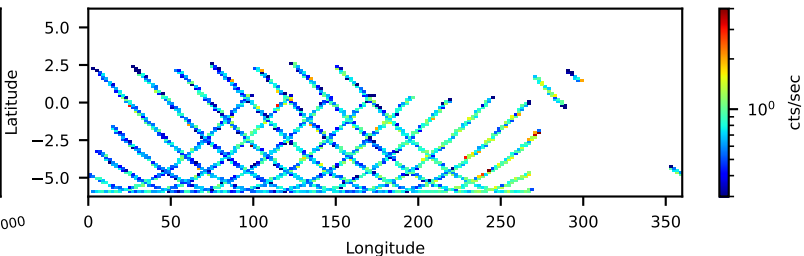
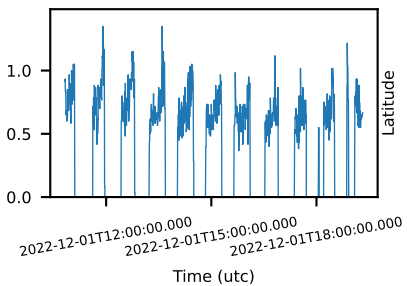
60-s bins



90801634002 FPMB: No SAA Filter 31.54-ks, 100%

Time (utc)  
60-s bins

--saacalc=3 -saamode=STRICT --tentacle=no 27.93-ks, 89%

Time (utc)  
60-s bins

--saacalc=3 -saamode=STRICT --tentacle=yes 27.66-ks, 88%

