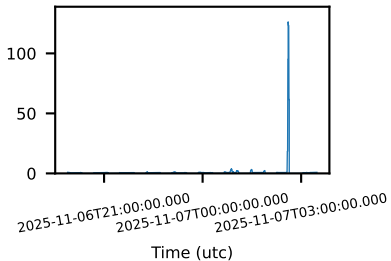
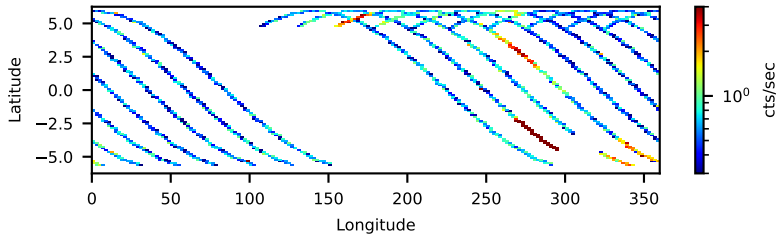


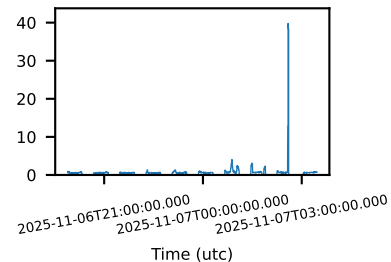
60-s bins



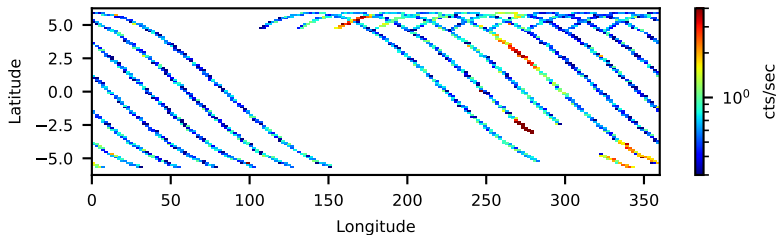
61102001002 FPMB: No SAA Filter 28.50-ks, 100%



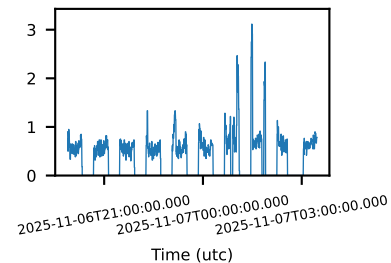
60-s bins



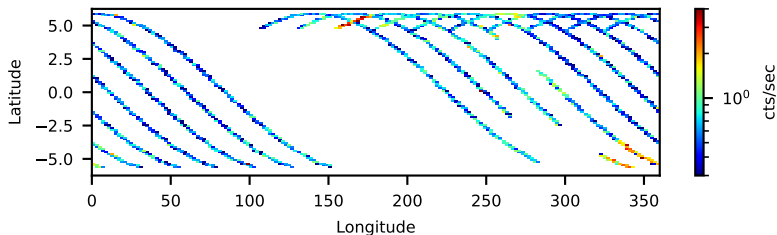
--saacalc=1 -saamode=OPTIMIZED --tentacle=no 28.20-ks, 99%



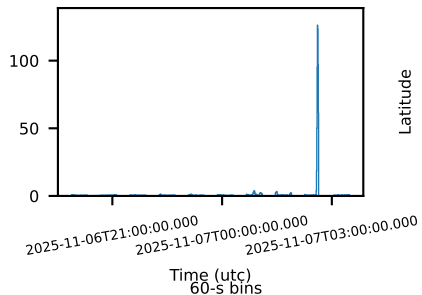
60-s bins



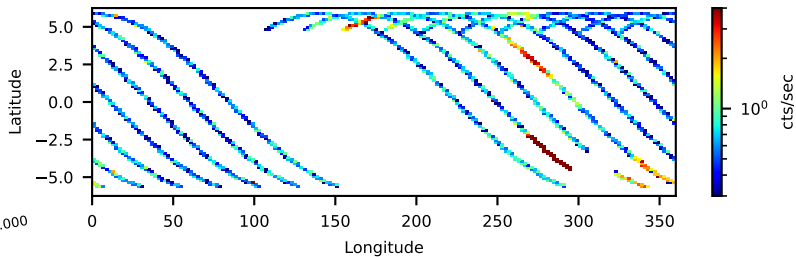
--saacalc=1 -saamode=OPTIMIZED --tentacle=yes 27.61-ks, 97%



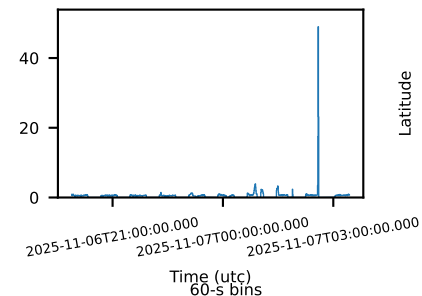
60-s bins



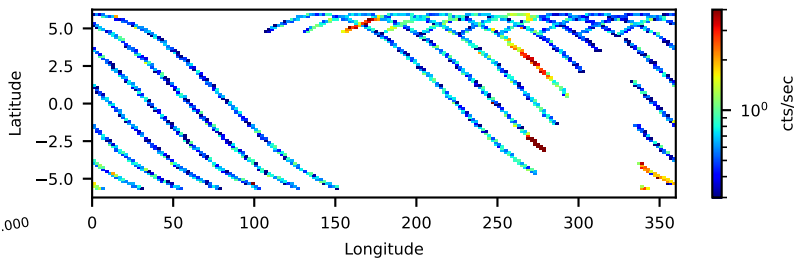
61102001002 FPMB: No SAA Filter 28.50-ks, 100%



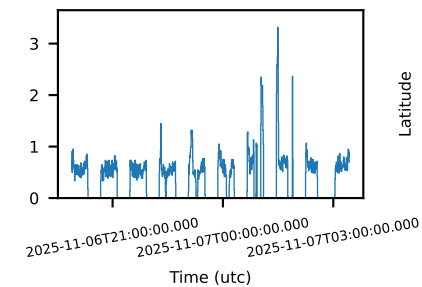
60-s bins



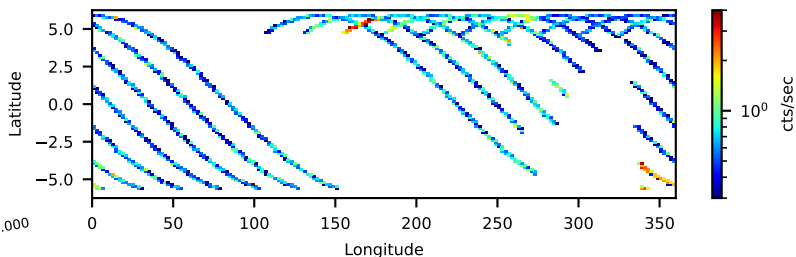
--saacalc=1 -saamode=STRICT --tentacle=no 26.14-ks, 92%



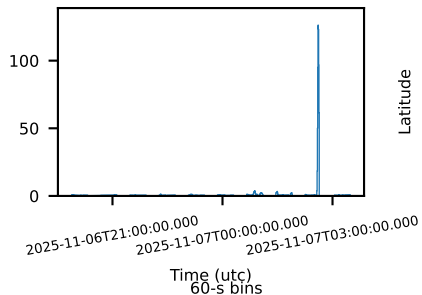
60-s bins



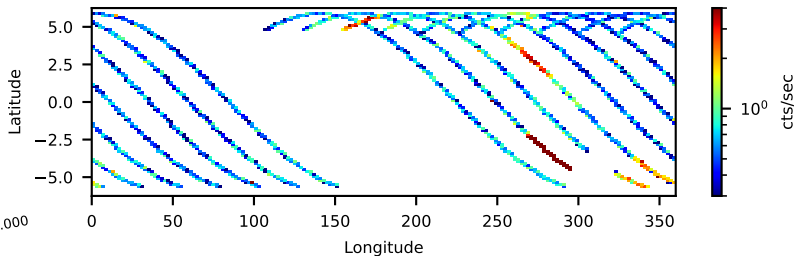
--saacalc=1 -saamode=STRICT --tentacle=yes 25.55-ks, 90%



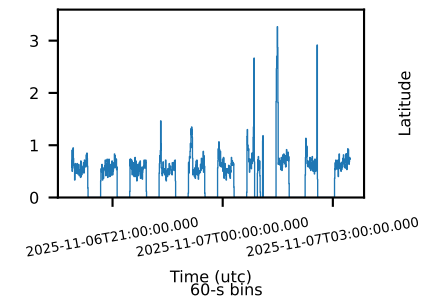
60-s bins



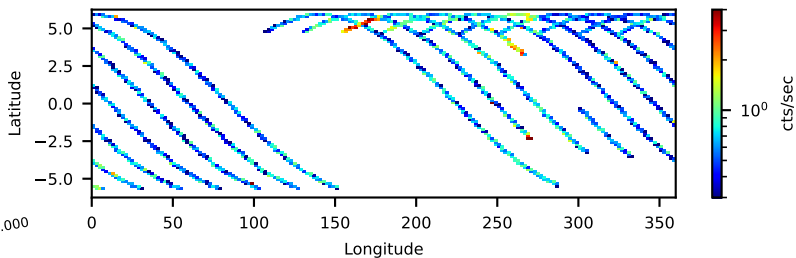
61102001002 FPMB: No SAA Filter 28.50-ks, 100%



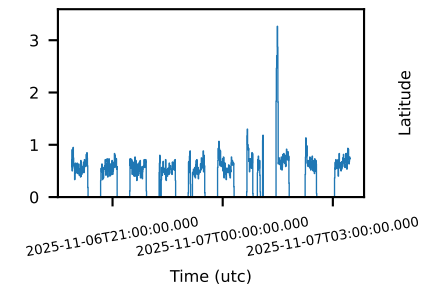
Time (utc)  
60-s bins



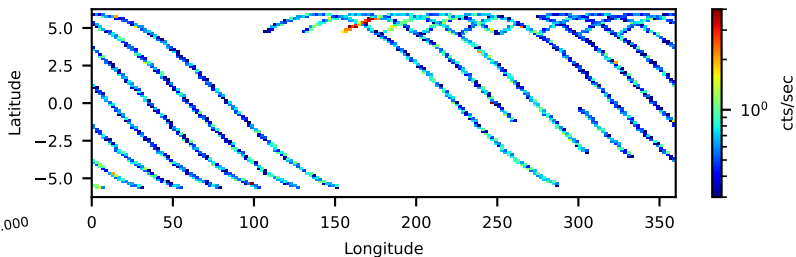
--saacalc=2 -saamode=OPTIMIZED --tentacle=no 26.93-ks, 95%



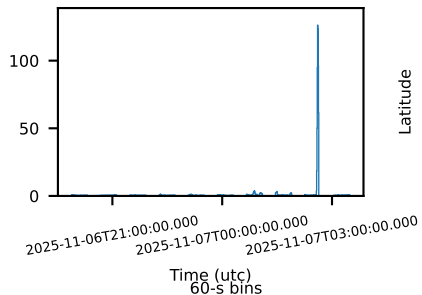
Time (utc)  
60-s bins



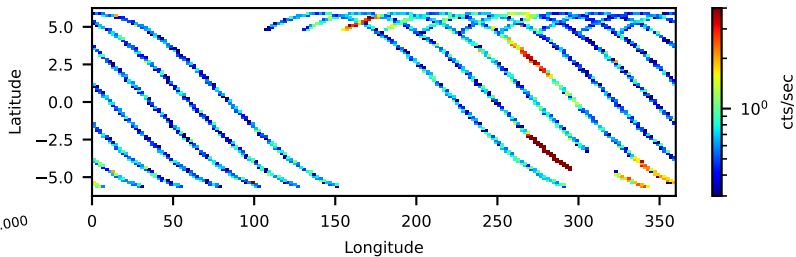
--saacalc=2 -saamode=OPTIMIZED --tentacle=yes 25.88-ks, 91%



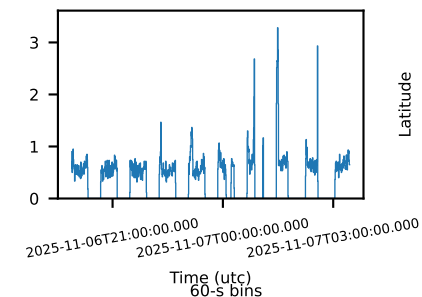
60-s bins



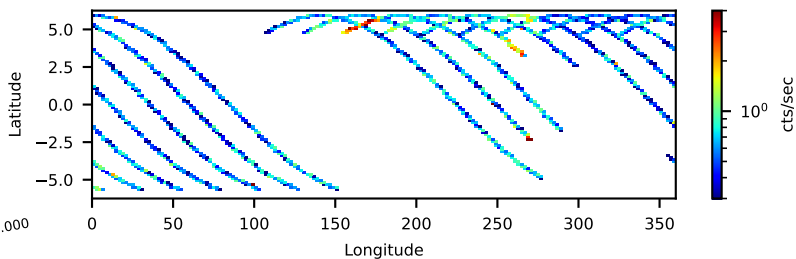
61102001002 FPMB: No SAA Filter 28.50-ks, 100%



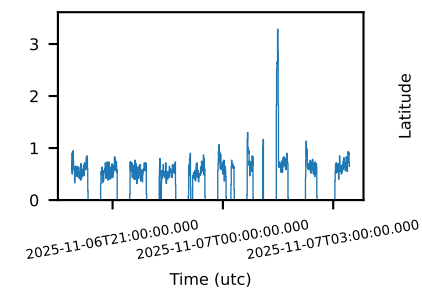
60-s bins



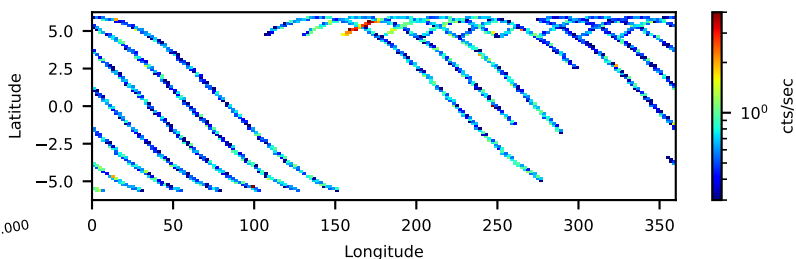
--saacalc=2 -saamode=STRICT --tentacle=no 25.32-ks, 89%



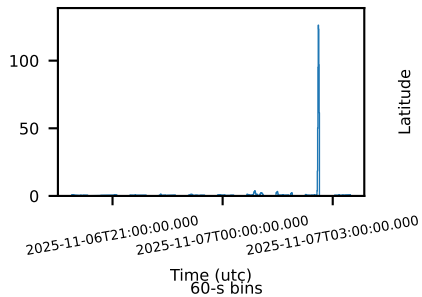
60-s bins



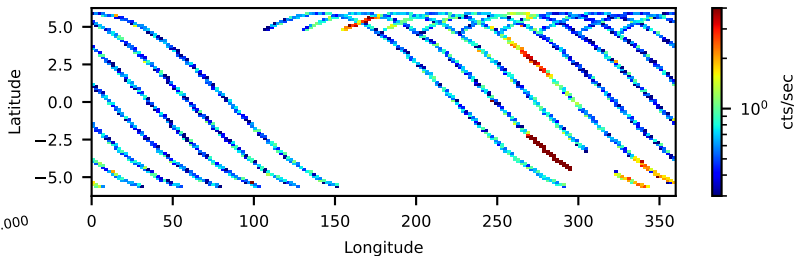
--saacalc=2 -saamode=STRICT --tentacle=yes 24.26-ks, 85%



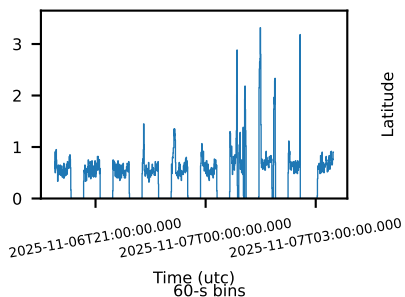
60-s bins



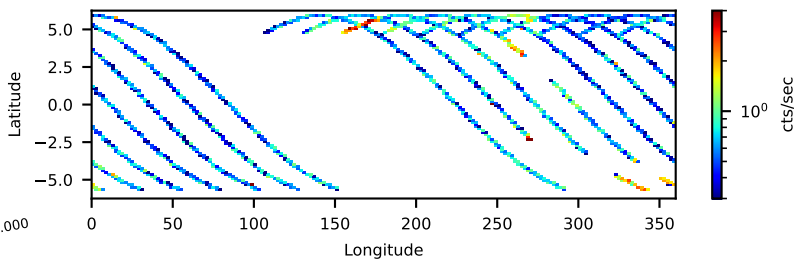
61102001002 FPMB: No SAA Filter 28.50-ks, 100%



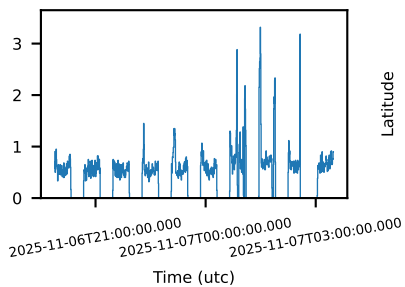
60-s bins



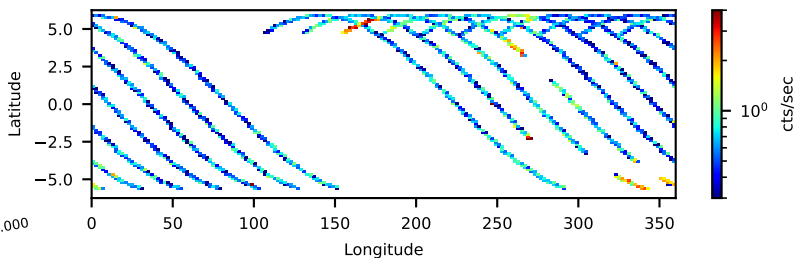
--saacalc=3 -saamode=OPTIMIZED --tentacle=no 27.76-ks, 97%



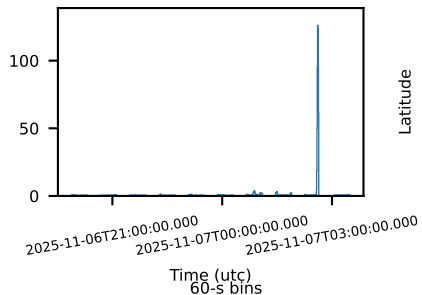
60-s bins



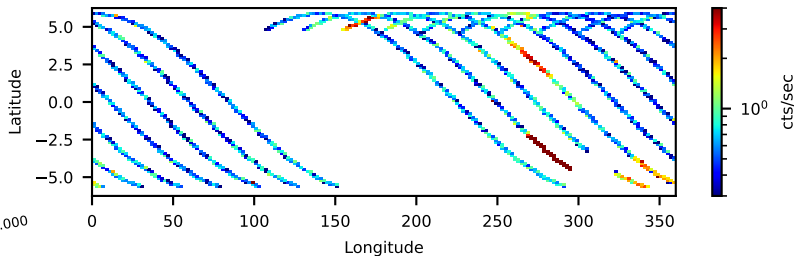
--saacalc=3 -saamode=OPTIMIZED --tentacle=yes 27.76-ks, 97%



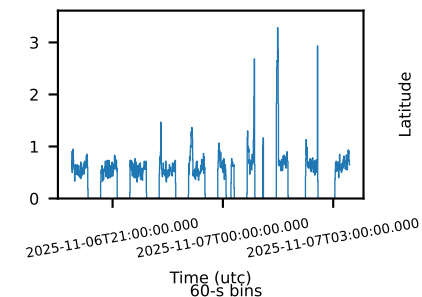
60-s bins



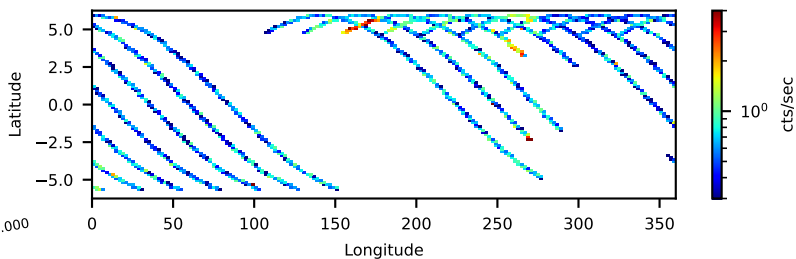
61102001002 FPMB: No SAA Filter 28.50-ks, 100%



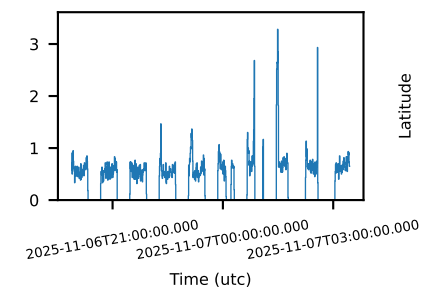
60-s bins



--saacalc=3 -saamode=STRICT --tentacle=no 25.32-ks, 89%



60-s bins



--saacalc=3 -saamode=STRICT --tentacle=yes 25.32-ks, 89%

