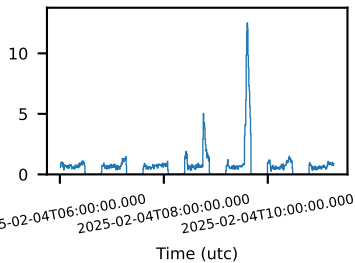
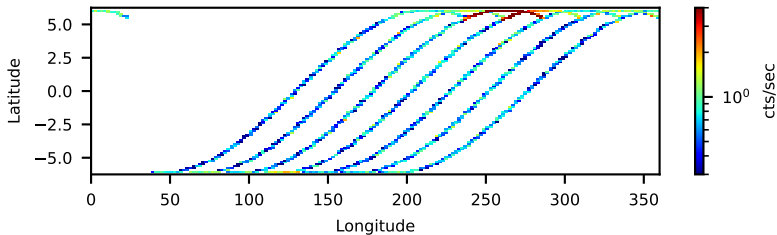


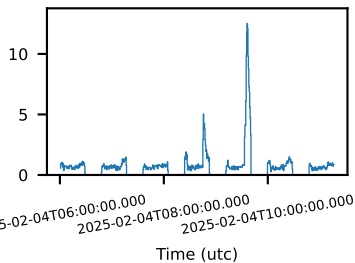
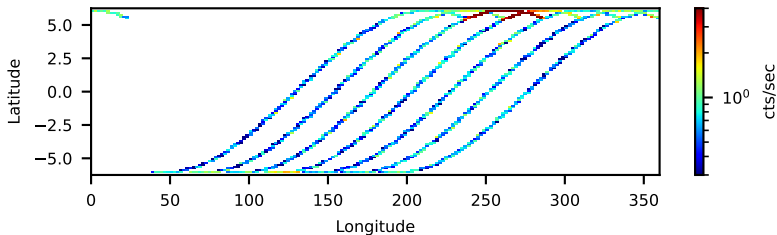
60-s bins



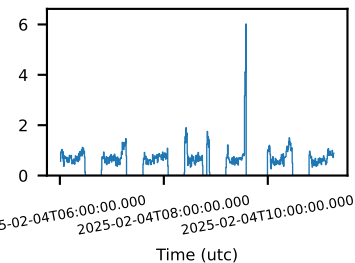
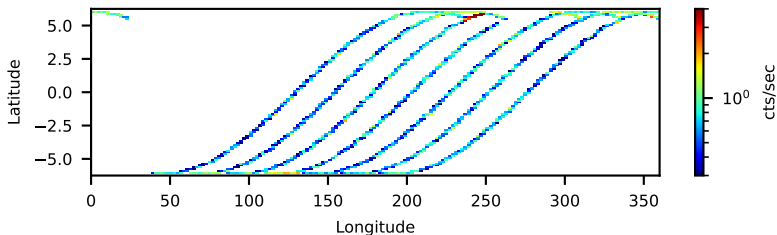
61061005002 FPCA: No SAA Filter 22.46-ks, 100%



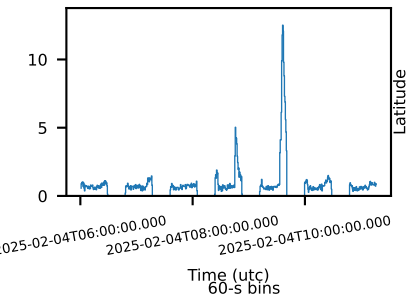
60-s bins

`--saacalc=1 -saamode=OPTIMIZED --tentacle=no` 22.46-ks, 100%

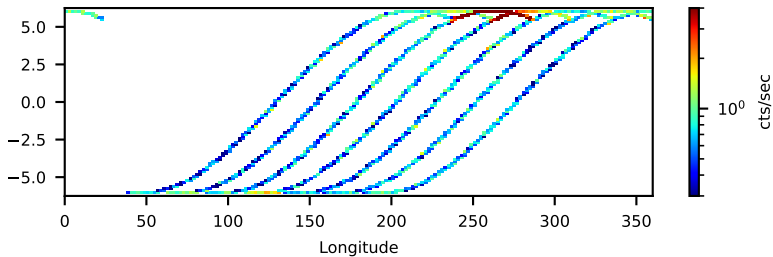
60-s bins

`--saacalc=1 -saamode=OPTIMIZED --tentacle=yes` 21.34-ks, 95%

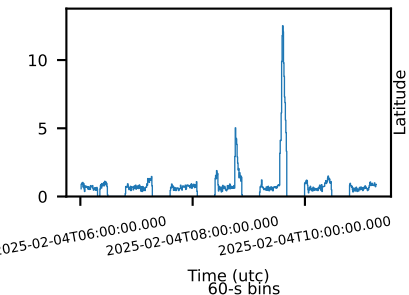
60-s bins



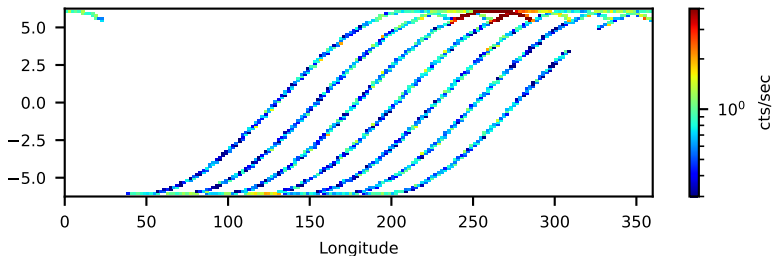
61061005002 FPMA: No SAA Filter 22.46-ks, 100%



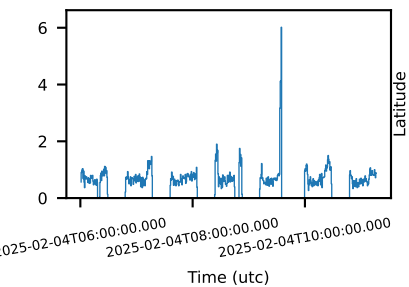
60-s bins



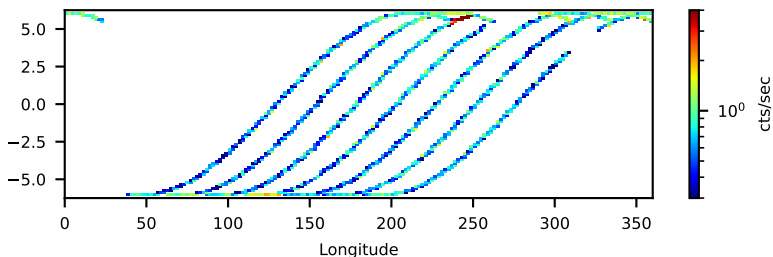
--saacalc=1 -saamode=STRICT --tentacle=no 22.17-ks, 99%



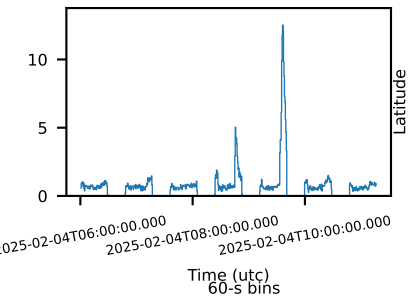
60-s bins



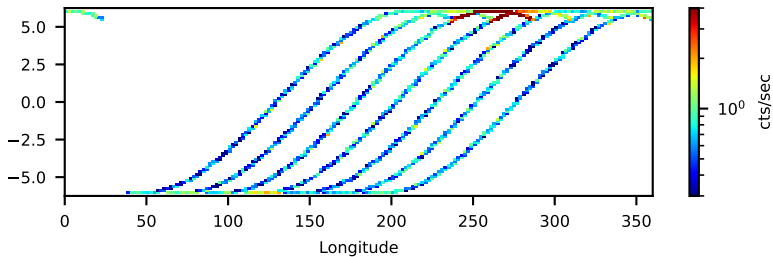
--saacalc=1 -saamode=STRICT --tentacle=yes 21.05-ks, 94%



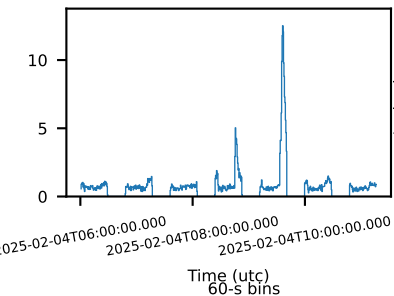
60-s bins



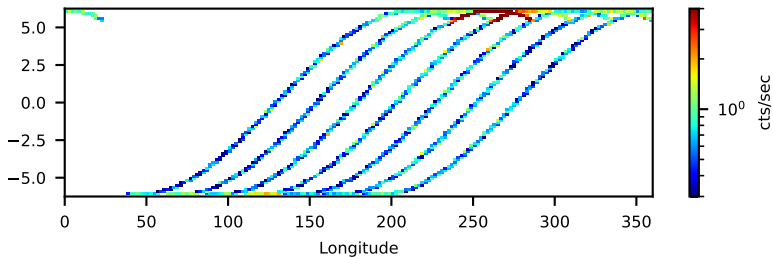
61061005002 FPMA: No SAA Filter 22.46-ks, 100%



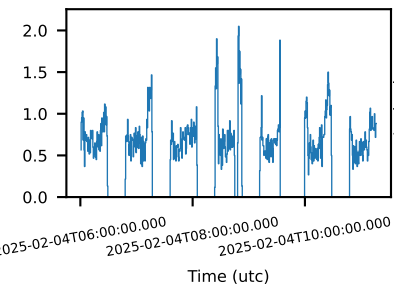
60-s bins



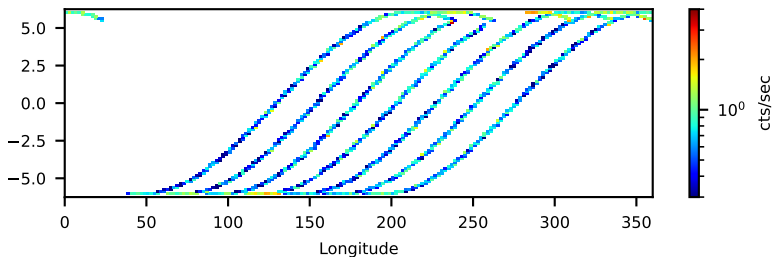
--saacalc=2 -saamode=OPTIMIZED --tentacle=no 22.46-ks, 100%



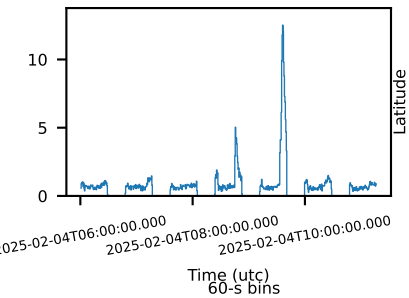
60-s bins



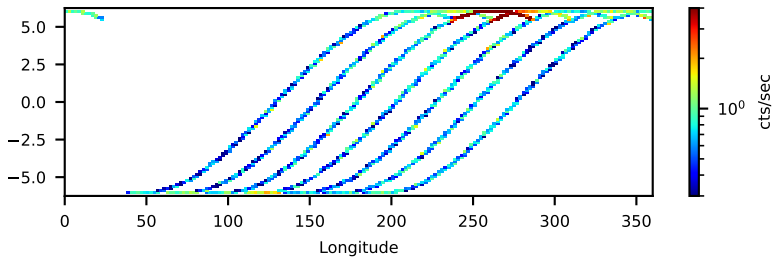
--saacalc=2 -saamode=OPTIMIZED --tentacle=yes 21.30-ks, 95%



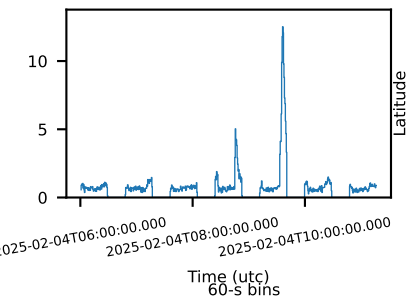
60-s bins



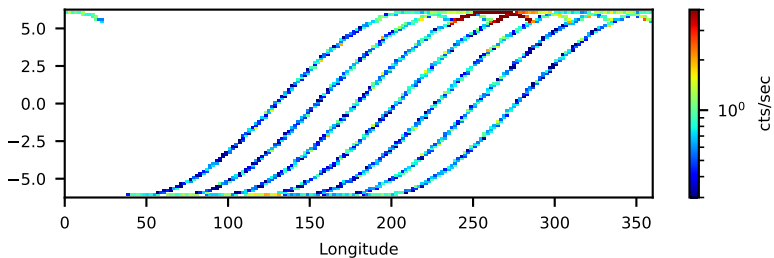
61061005002 FPMA: No SAA Filter 22.46-ks, 100%



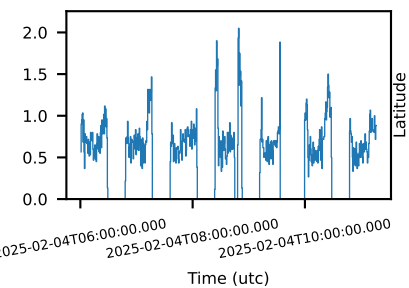
60-s bins



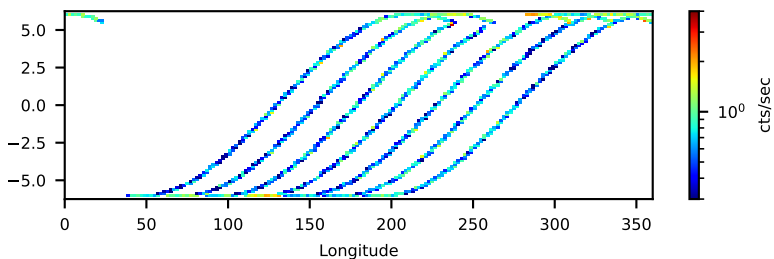
--saacalc=2 -saamode=STRICT --tentacle=no 22.46-ks, 100%



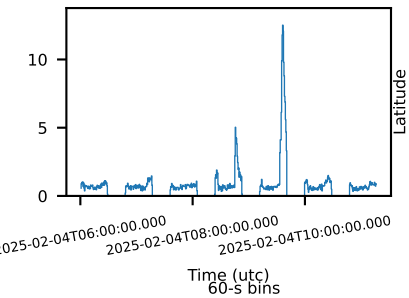
60-s bins



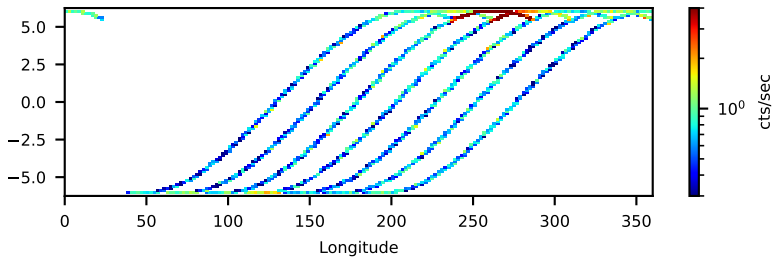
--saacalc=2 -saamode=STRICT --tentacle=yes 21.30-ks, 95%



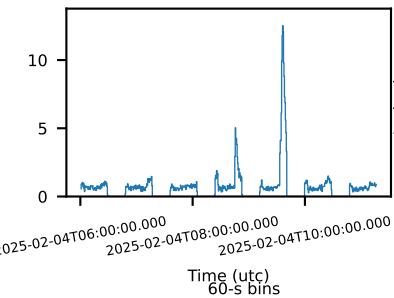
60-s bins



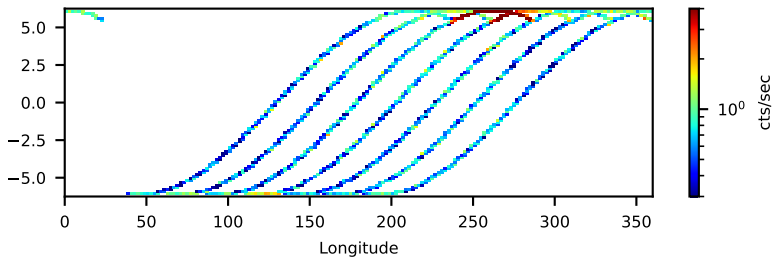
61061005002 FPMA: No SAA Filter 22.46-ks, 100%



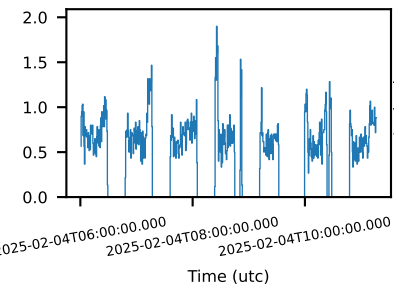
60-s bins



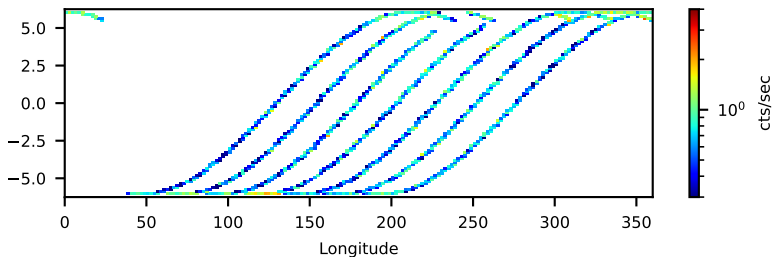
--saacalc=3 -saamode=OPTIMIZED --tentacle=no 22.46-ks, 100%



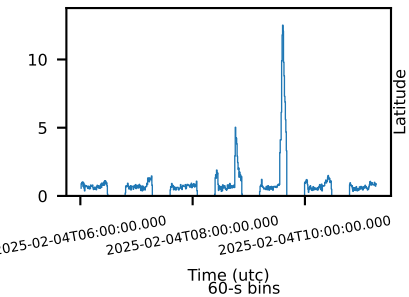
60-s bins



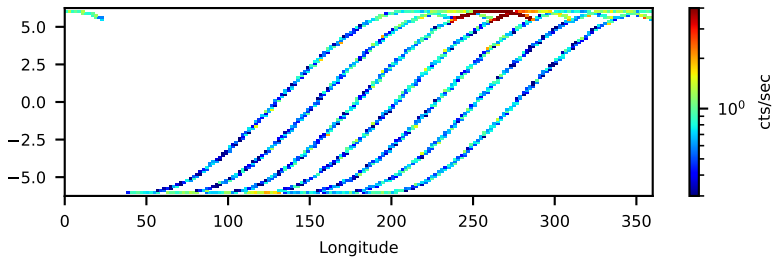
--saacalc=3 -saamode=OPTIMIZED --tentacle=yes 20.57-ks, 92%



60-s bins

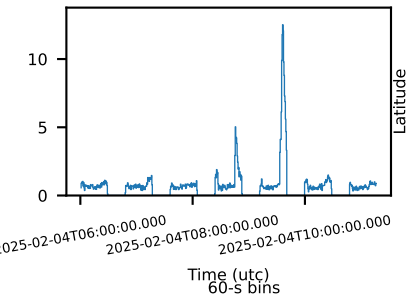


61061005002 FPMA: No SAA Filter 22.46-ks, 100%

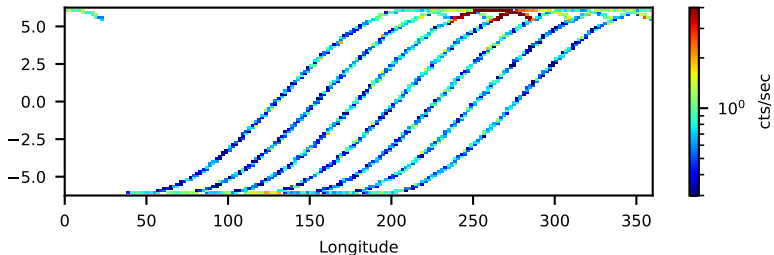


Time (utc)

60-s bins

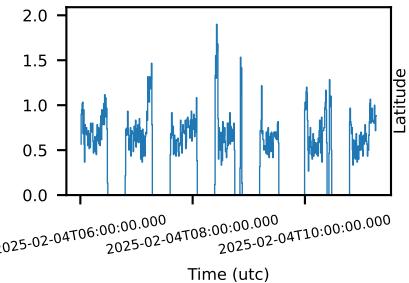


--saacalc=3 -saamode=STRICT --tentacle=no 22.46-ks, 100%



Time (utc)

60-s bins



--saacalc=3 -saamode=STRICT --tentacle=yes 20.57-ks, 92%

