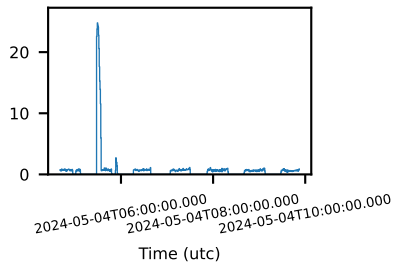
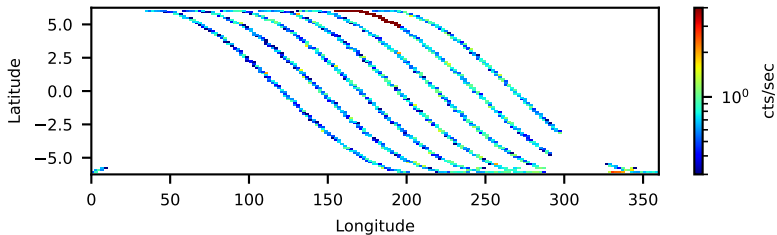


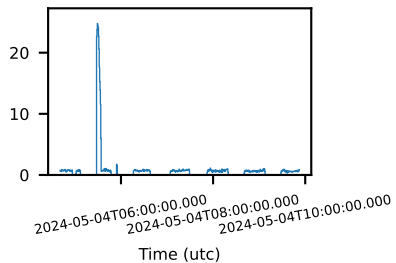
60-s bins



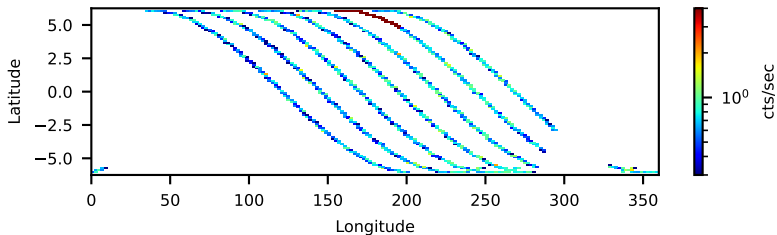
60160580002 FPMB: No SAA Filter 18.74-ks, 100%



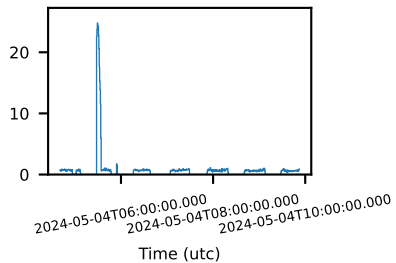
60-s bins



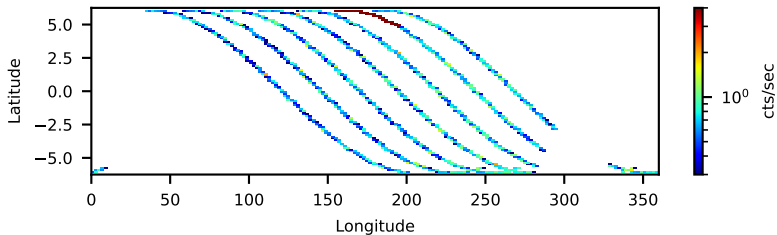
--saacalc=1 -saamode=OPTIMIZED --tentacle=no 18.41-ks, 98%



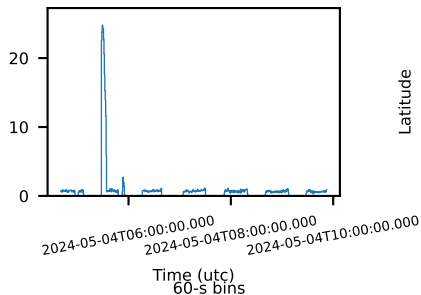
60-s bins



--saacalc=1 -saamode=OPTIMIZED --tentacle=yes 18.41-ks, 98%

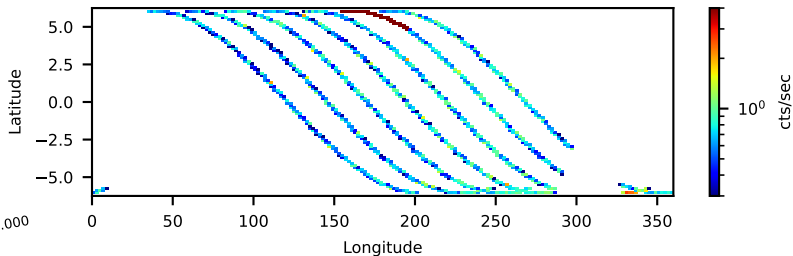


60-s bins

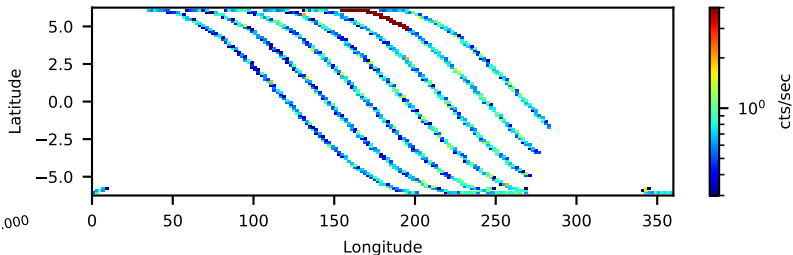


Time (utc)
60-s bins

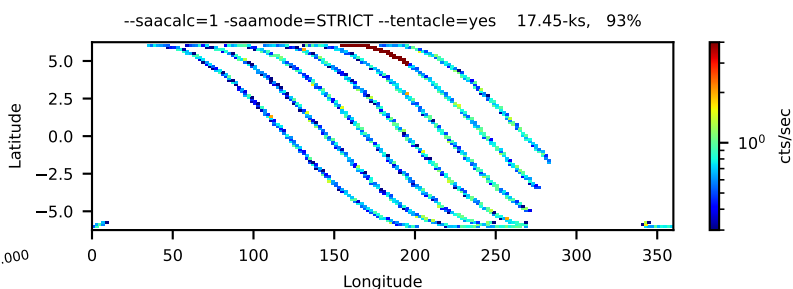
60160580002 FPMB: No SAA Filter 18.74-ks, 100%



--saacalc=1 -saamode=STRICT --tentacle=no 17.45-ks, 93%

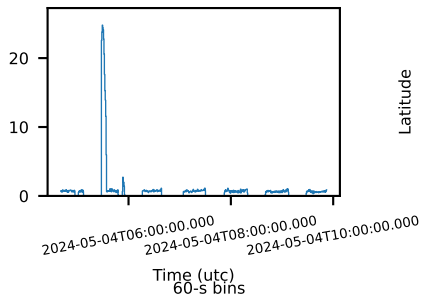


Time (utc)
60-s bins



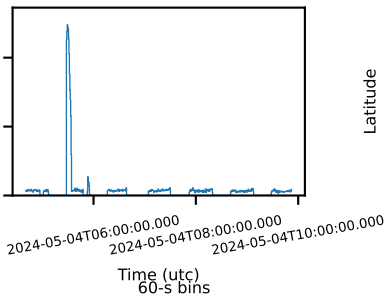
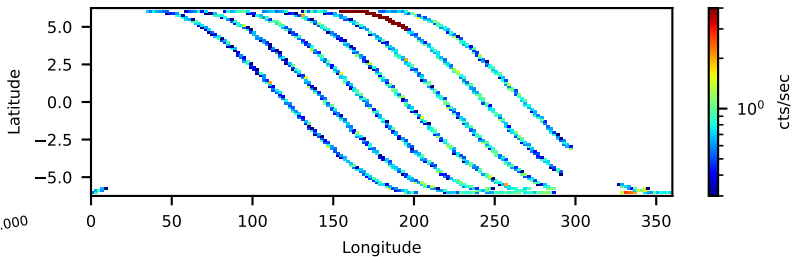
Time (utc)

60-s bins



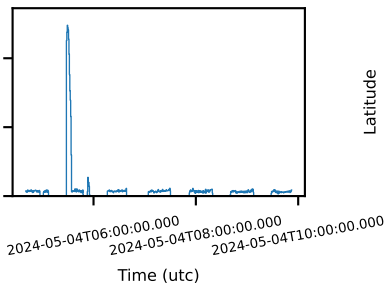
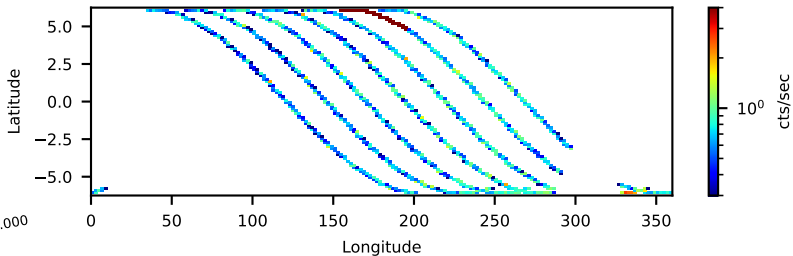
Time (utc)
60-s bins

60160580002 FPMB: No SAA Filter 18.74-ks, 100%



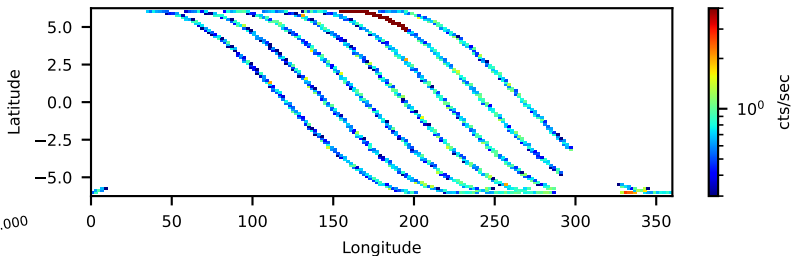
Time (utc)
60-s bins

--saacalc=2 -saamode=OPTIMIZED --tentacle=no 18.74-ks, 100%

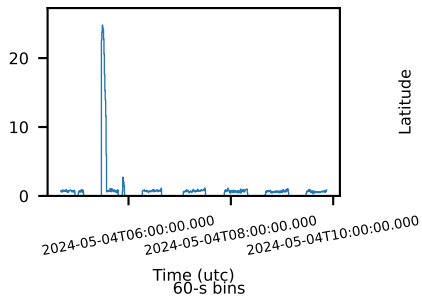


Time (utc)

--saacalc=2 -saamode=OPTIMIZED --tentacle=yes 18.74-ks, 100%

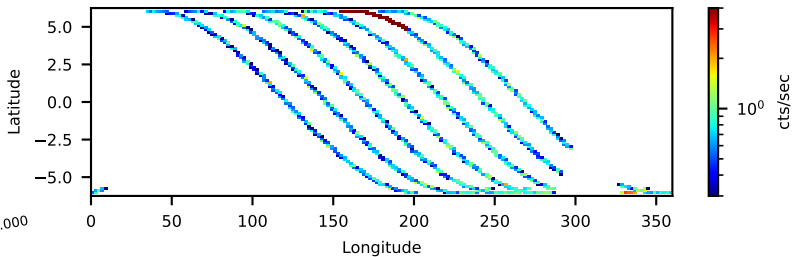


60-s bins

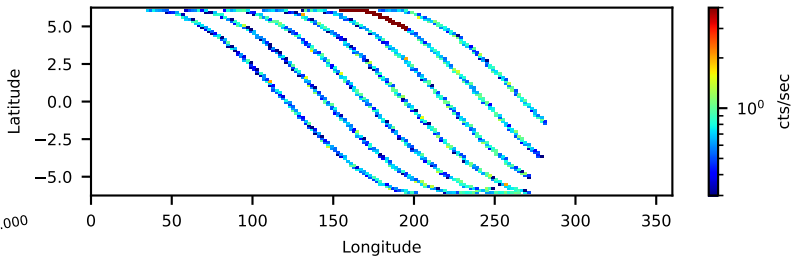


Time (utc)
60-s bins

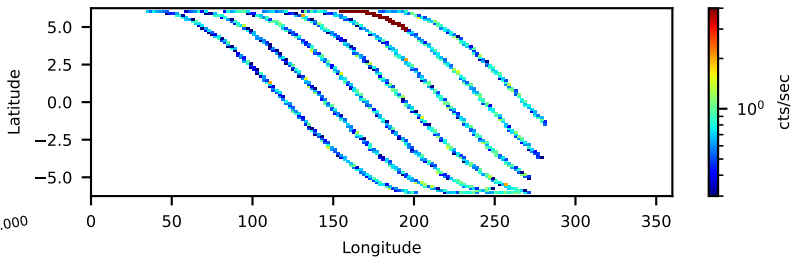
60160580002 FPMB: No SAA Filter 18.74-ks, 100%



--saacalc=2 -saamode=STRICT --tentacle=no 16.96-ks, 91%

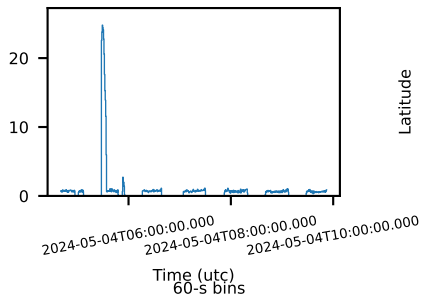


Time (utc)
60-s bins

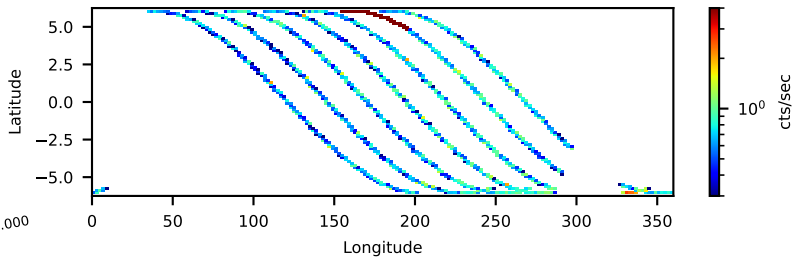


Time (utc)

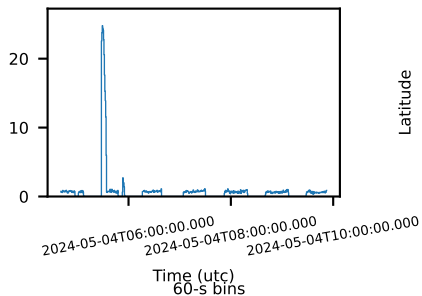
60-s bins



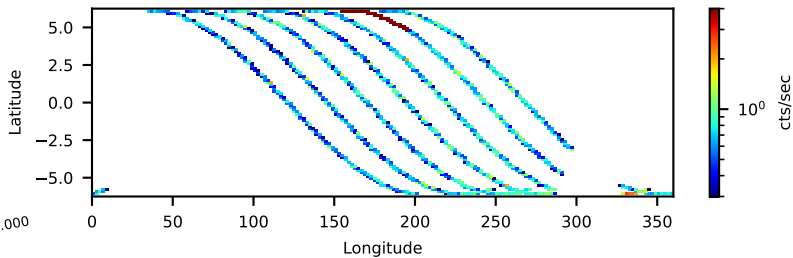
60160580002 FPMB: No SAA Filter 18.74-ks, 100%



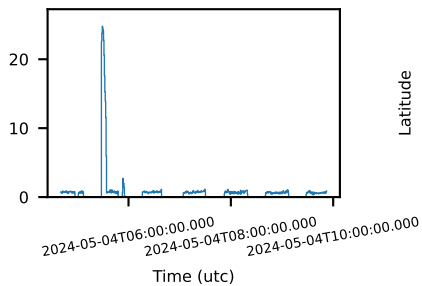
60-s bins



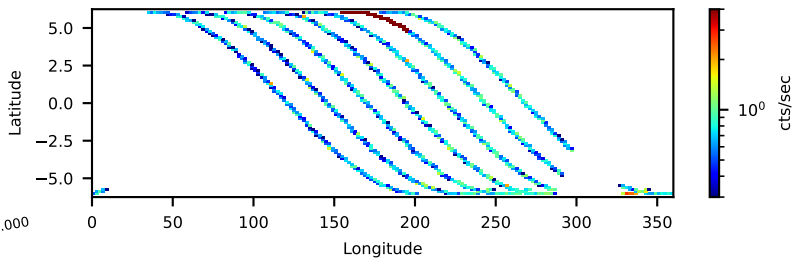
--saacalc=3 -saamode=OPTIMIZED --tentacle=no 18.74-ks, 100%



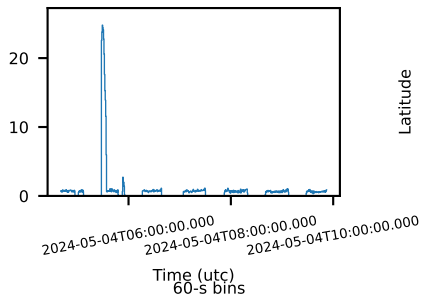
60-s bins



--saacalc=3 -saamode=OPTIMIZED --tentacle=yes 18.74-ks, 100%

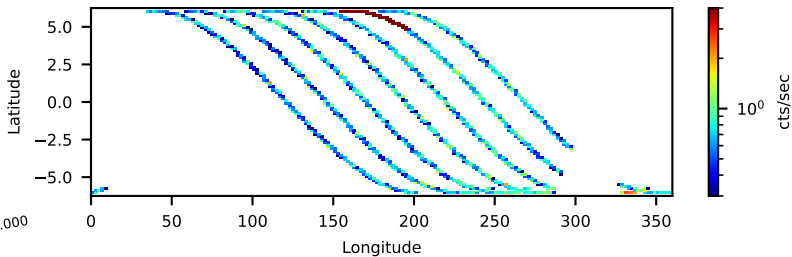


60-s bins

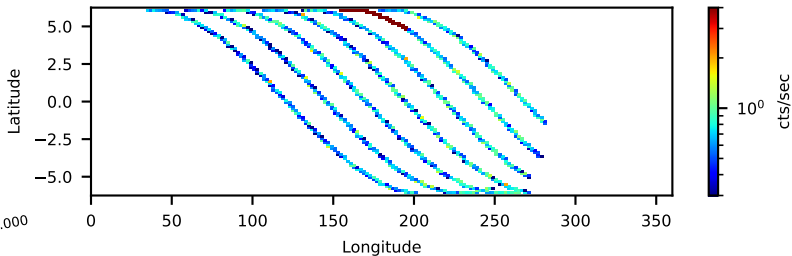


Time (utc)
60-s bins

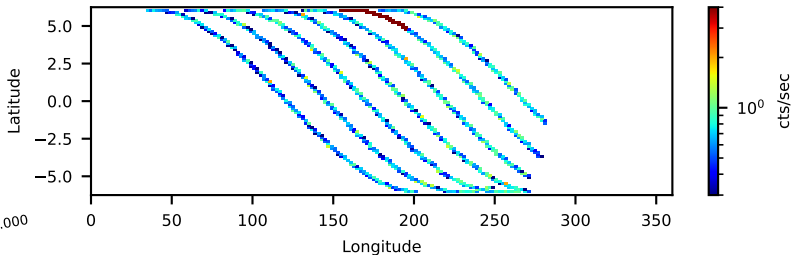
60160580002 FPMB: No SAA Filter 18.74-ks, 100%



--saacalc=3 -saamode=STRICT --tentacle=no 16.96-ks, 91%



Time (utc)
60-s bins



Time (utc)