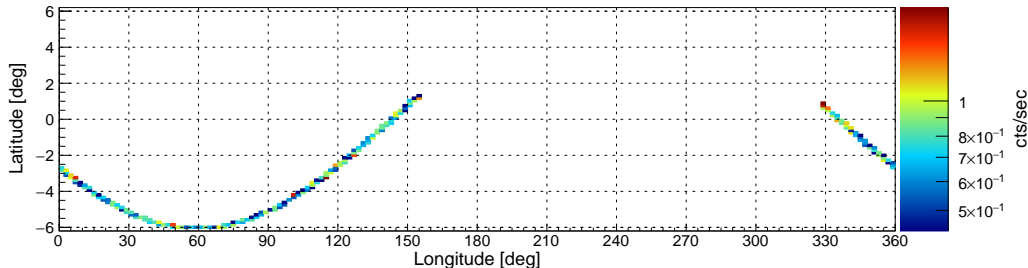
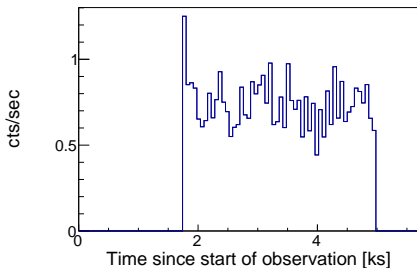


Filter options: SAA algorithm 1 (high-shield rate based using a figure-of-merit as evaluation metric), optimized SAA cut

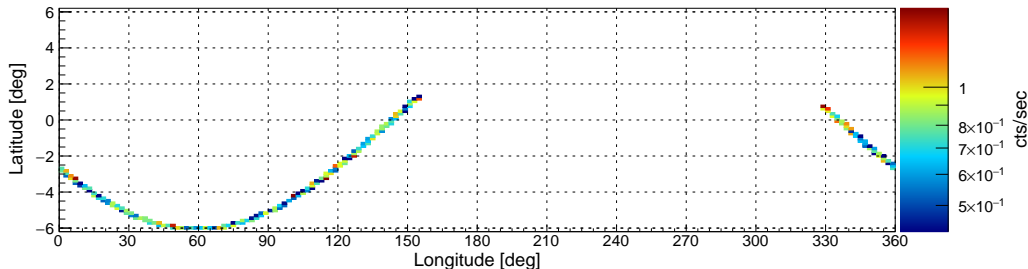
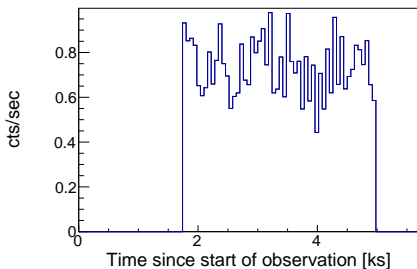
nucalcsaa options: nucalcsaa task not used!

Effective exposure time: 3228 sec (100.0%)



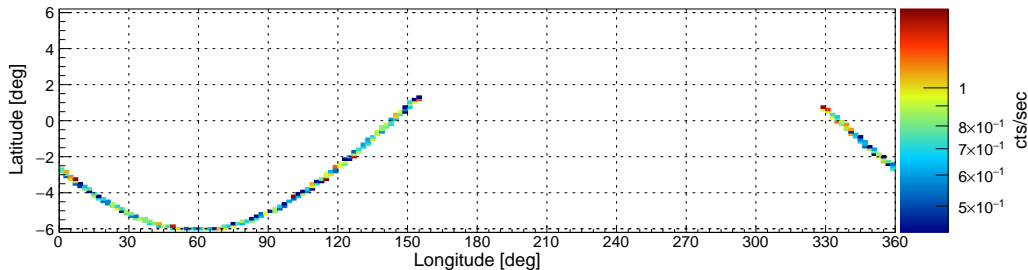
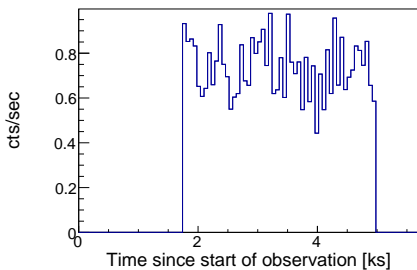
nucalcsaa options: --saacalc=1 --saamode=optimized --tentacle=no

Effective exposure time: 3218 sec (99.69%)



nucalcsaa options: --saacalc=1 --saamode=optimized --tentacle=yes

Effective exposure time: 3218 sec (99.69%)

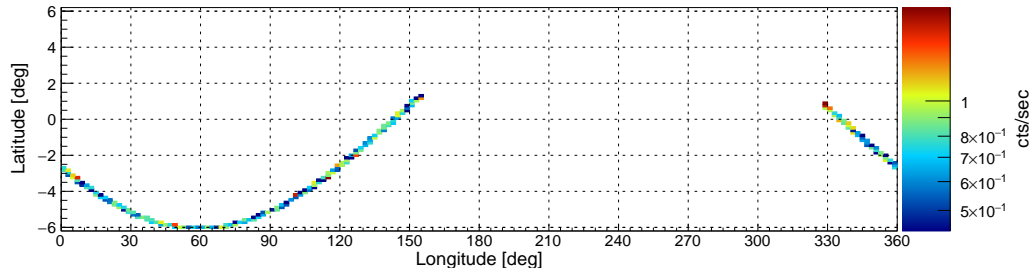
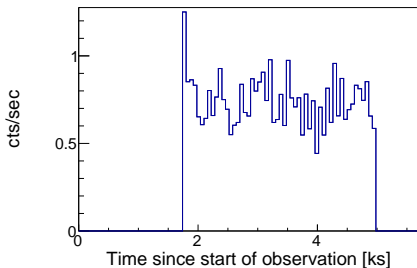


Target: Jupiter_Juno_AJ7_POS21 ID: 90313021001 Start: 2017-06-19 14:41:09 UTC Module: A

Filter options: SAA algorithm 1 (high-shield rate based using a figure-of-merit as evaluation metric), strict SAA cut

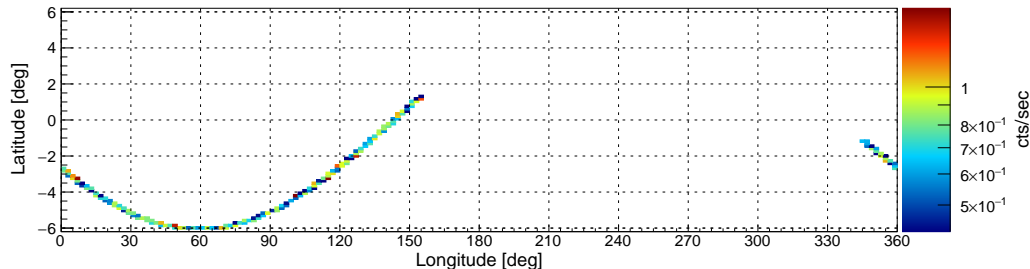
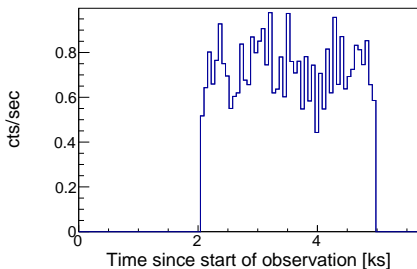
nucalcsaa options: nucalcsaa task not used!

Effective exposure time: 3228 sec (100.0%)



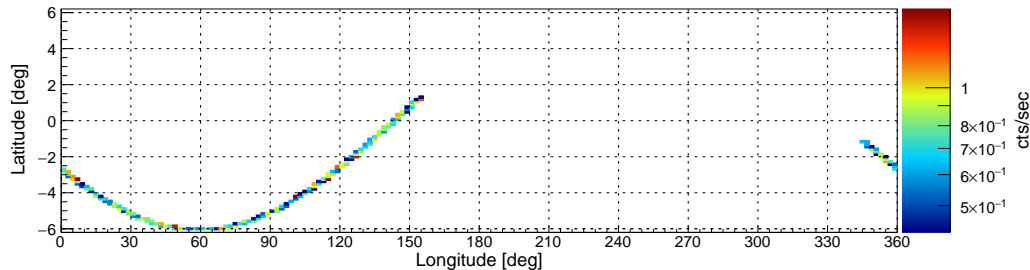
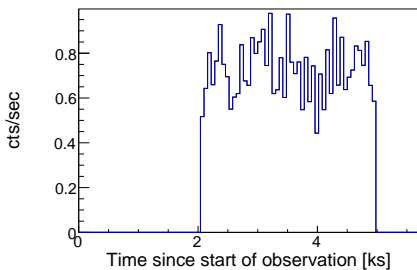
nucalcsaa options: --saacalc=1 --saamode=strict --tentacle=no

Effective exposure time: 2926 sec (90.64%)



nucalcsaa options: --saacalc=1 --saamode=strict --tentacle=yes

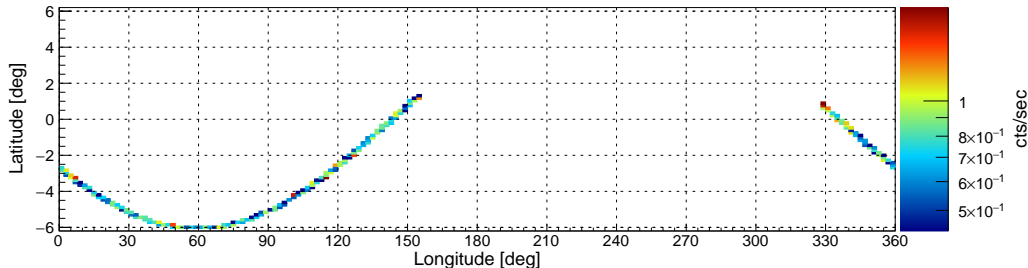
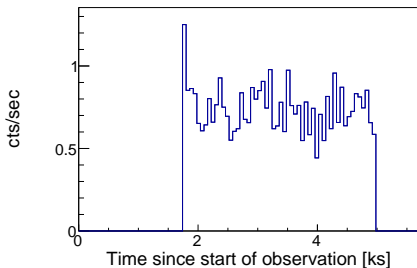
Effective exposure time: 2926 sec (90.64%)



Filter options: SAA algorithm 2 (low-shield rate based using rms as evaluation metric), optimized SAA cut

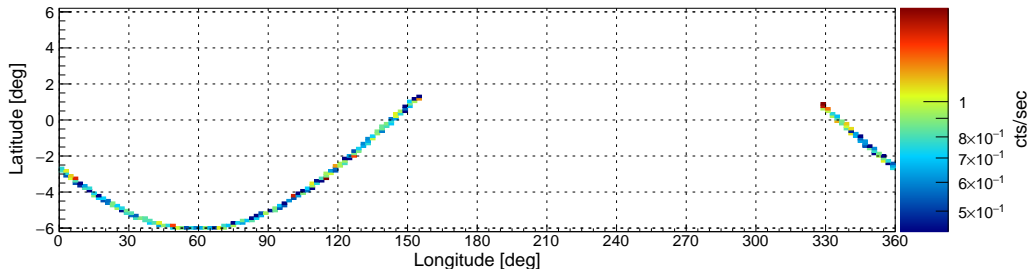
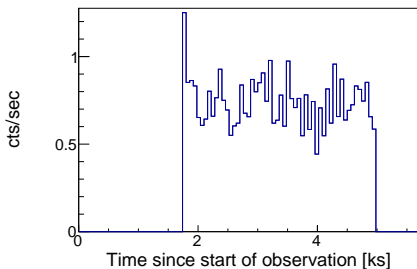
nucalcsaa options: nucalcsaa task not used!

Effective exposure time: 3228 sec (100.0%)



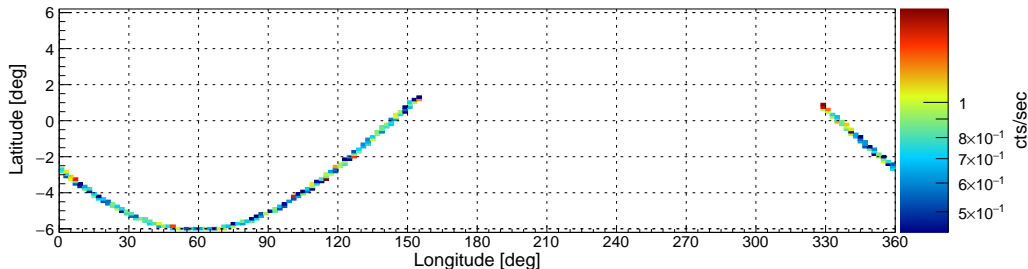
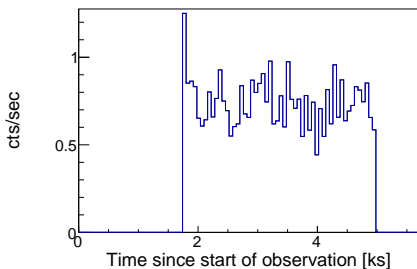
nucalcsaa options: --saacalc=2 --saamode=optimized --tentacle=no

Effective exposure time: 3228 sec (100%)



nucalcsaa options: --saacalc=2 --saamode=optimized --tentacle=yes

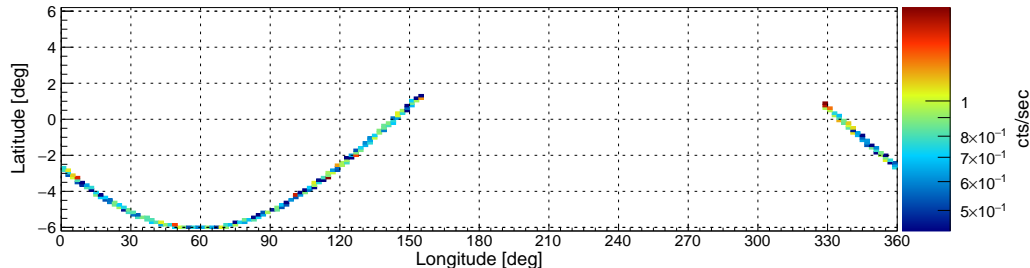
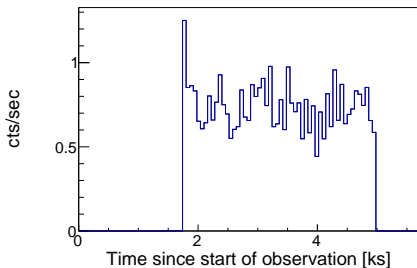
Effective exposure time: 3228 sec (100%)



Filter options: SAA algorithm 2 (low-shield rate based using rms as evaluation metric), strict SAA cut

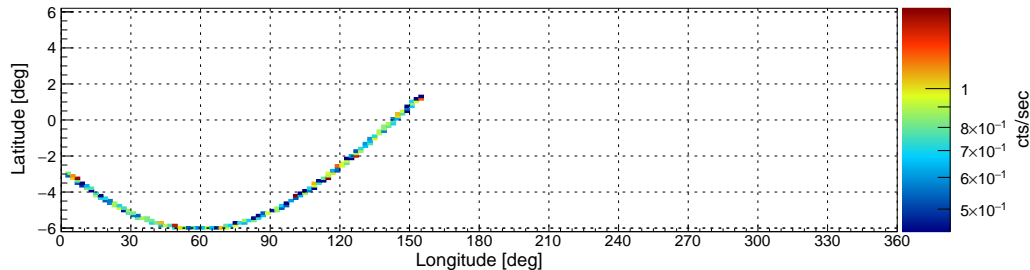
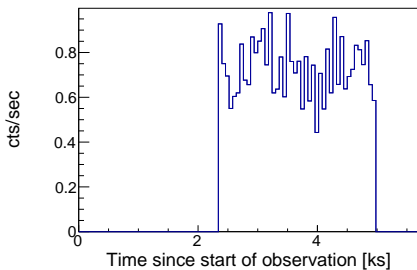
nucalcsaa options: nucalcsaa task not used!

Effective exposure time: 3228 sec (100.0%)



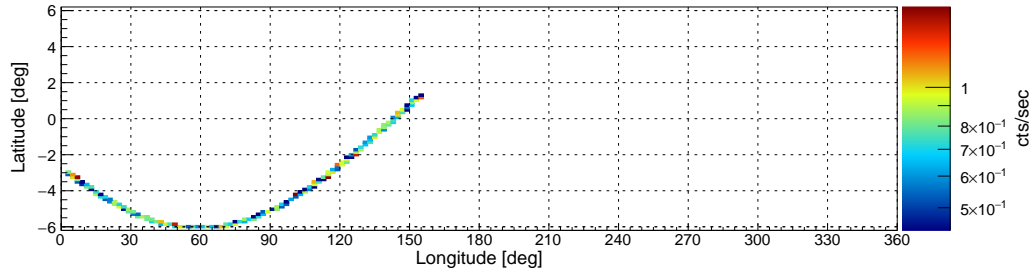
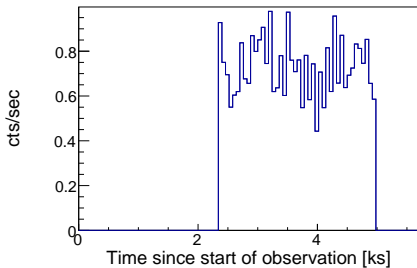
nucalcsaa options: --saacalc=2 --saamode=strict --tentacle=no

Effective exposure time: 2633 sec (81.57%)



nucalcsaa options: --saacalc=2 --saamode=strict --tentacle=yes

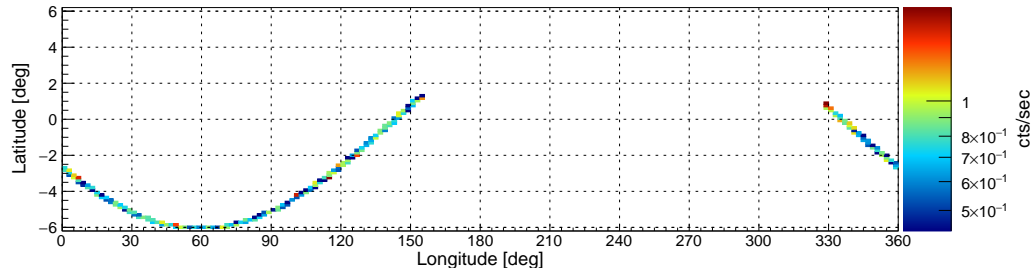
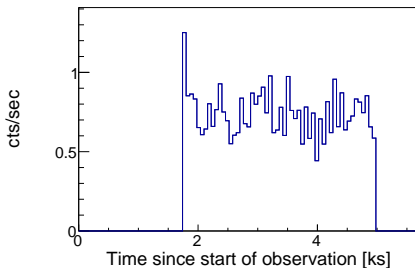
Effective exposure time: 2633 sec (81.57%)



Filter options: SAA algorithm 3 (low-shield rate based using rms as evaluation metric), optimized SAA cut

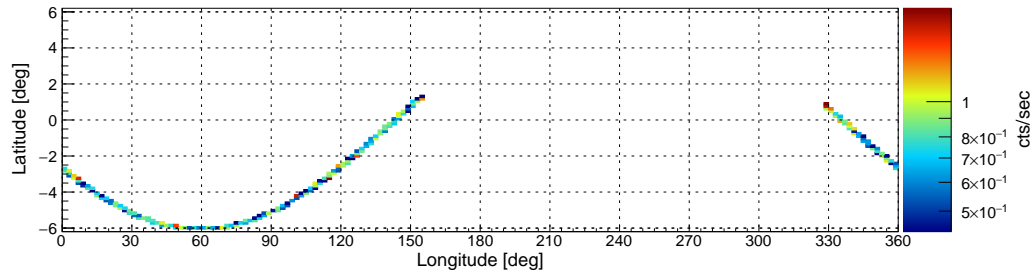
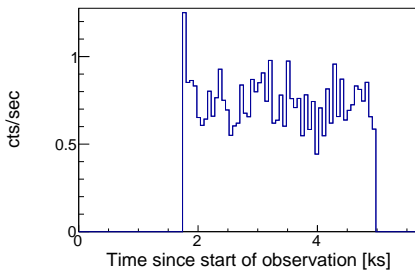
nucalcsaa options: nucalcsaa task not used!

Effective exposure time: 3228 sec (100.0%)



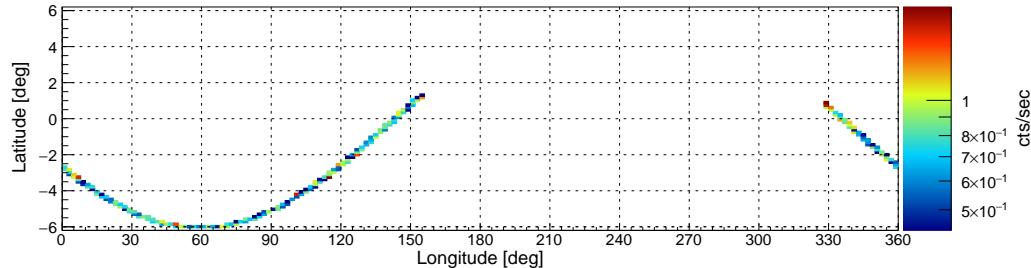
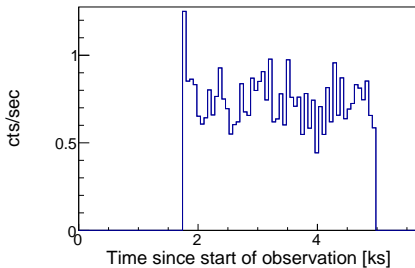
nucalcsaa options: --saacalc=3 --saamode=optimized --tentacle=no

Effective exposure time: 3228 sec (100%)



nucalcsaa options: --saacalc=3 --saamode=optimized --tentacle=yes

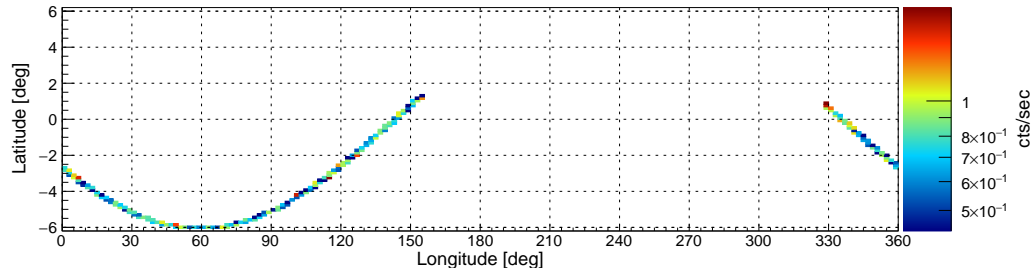
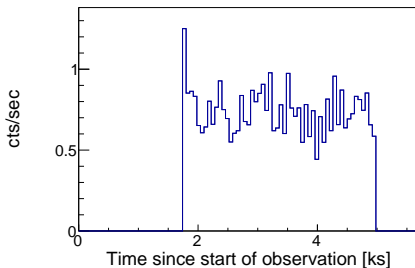
Effective exposure time: 3228 sec (100%)



Filter options: SAA algorithm 3 (low-shield rate based using rms as evaluation metric), strict SAA cut

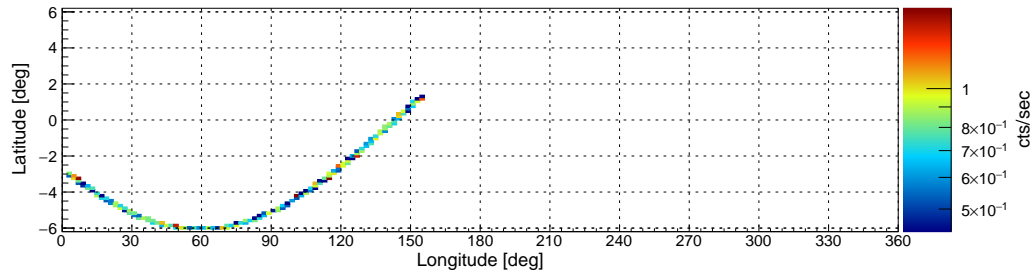
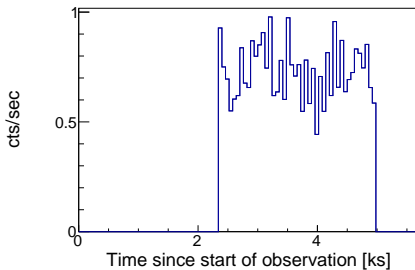
nucalcsaa options: nucalcsaa task not used!

Effective exposure time: 3228 sec (100.0%)



nucalcsaa options: --saacalc=3 --saamode=strict --tentacle=no

Effective exposure time: 2633 sec (81.57%)



nucalcsaa options: --saacalc=3 --saamode=strict --tentacle=yes

Effective exposure time: 2633 sec (81.57%)

