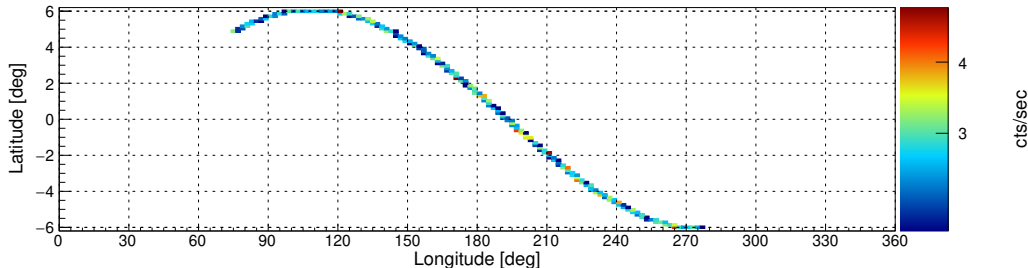
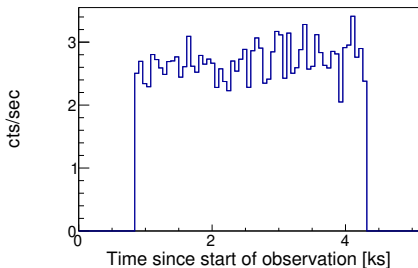


Target: GX_339m4_SLPA193 ID: 80601002004 Start: 2021-05-05 13:21:09 UTC Module: A

Filter options: SAA algorithm 1 (high-shield rate based using a figure-of-merit as evaluation metric), optimized SAA cut

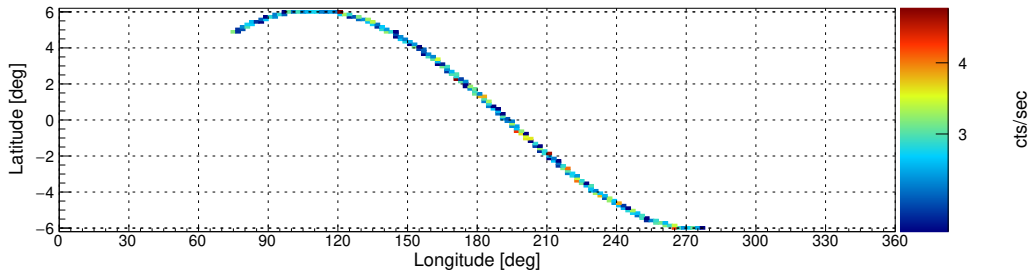
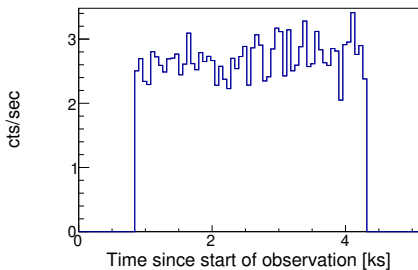
nucalcsaa options: nucalcsaa task not used!

Effective exposure time: 3488 sec (100.0%)



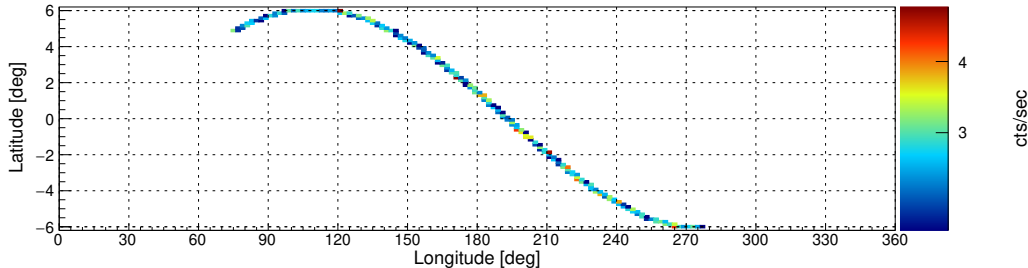
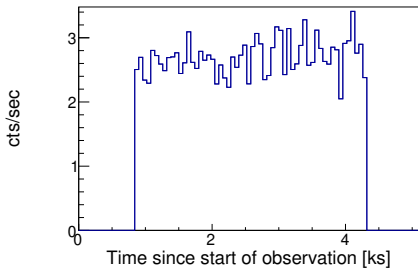
nucalcsaa options: --saacalc=1 --saamode=optimized --tentacle=no

Effective exposure time: 3488 sec (100%)



nucalcsaa options: --saacalc=1 --saamode=optimized --tentacle=yes

Effective exposure time: 3488 sec (100%)

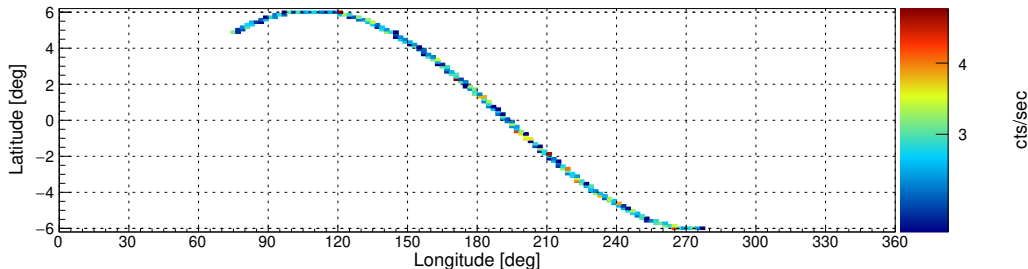
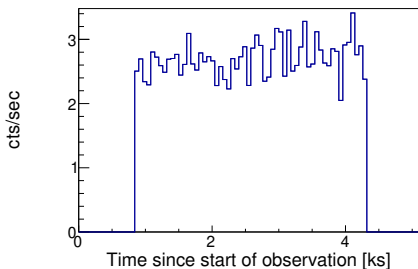


Target: GX_339m4_SLPA193 ID: 80601002004 Start: 2021-05-05 13:21:09 UTC Module: A

Filter options: SAA algorithm 1 (high-shield rate based using a figure-of-merit as evaluation metric), strict SAA cut

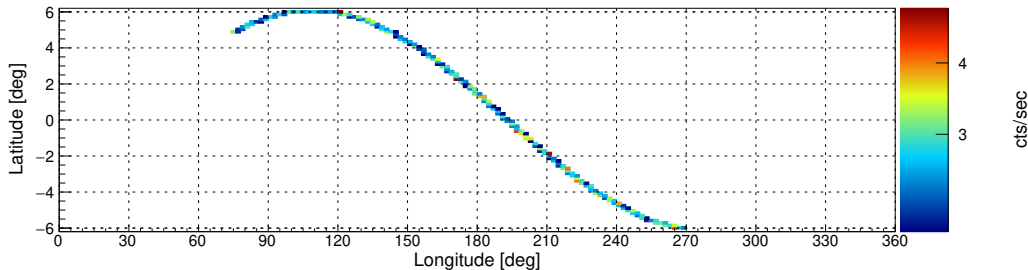
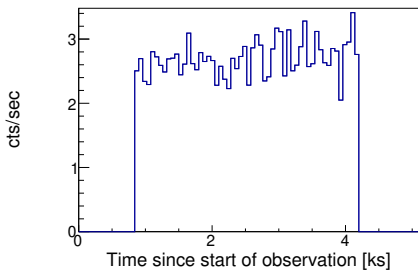
nucalcsaa options: nucalcsaa task not used!

Effective exposure time: 3488 sec (100.0%)



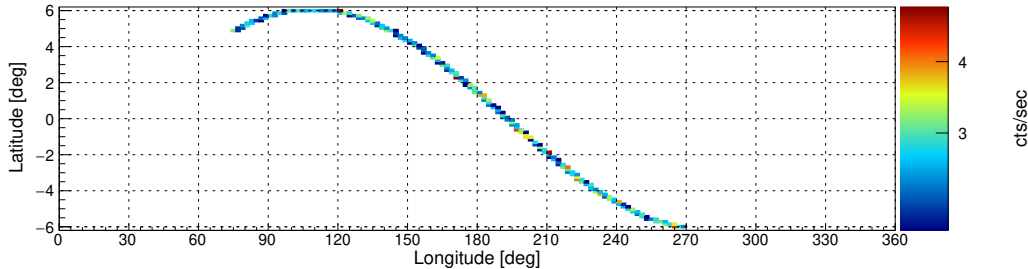
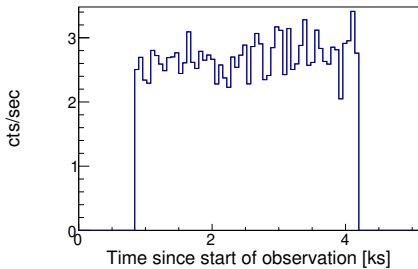
nucalcsaa options: --saacalc=1 --saamode=strict --tentacle=no

Effective exposure time: 3362 sec (96.39%)



nucalcsaa options: --saacalc=1 --saamode=strict --tentacle=yes

Effective exposure time: 3362 sec (96.39%)

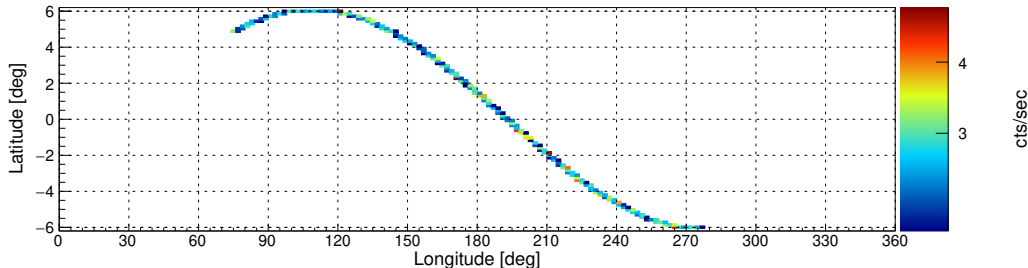
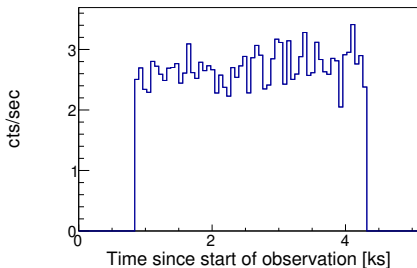


Target: GX_339m4_SLPA193 ID: 80601002004 Start: 2021-05-05 13:21:09 UTC Module: A

Filter options: SAA algorithm 2 (low-shield rate based using rms as evaluation metric), optimized SAA cut

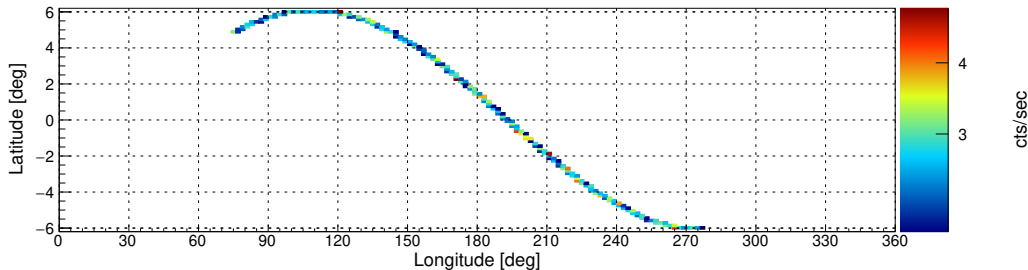
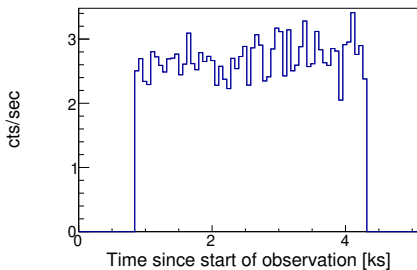
nucalcsaa options: nucalcsaa task not used!

Effective exposure time: 3488 sec (100.0%)



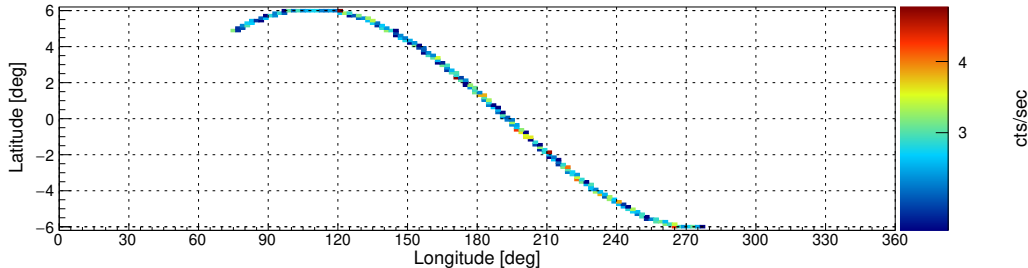
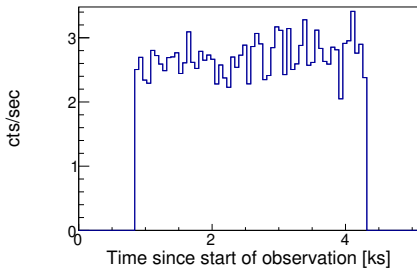
nucalcsaa options: --saacalc=2 --saamode=optimized --tentacle=no

Effective exposure time: 3488 sec (100%)



nucalcsaa options: --saacalc=2 --saamode=optimized --tentacle=yes

Effective exposure time: 3488 sec (100%)

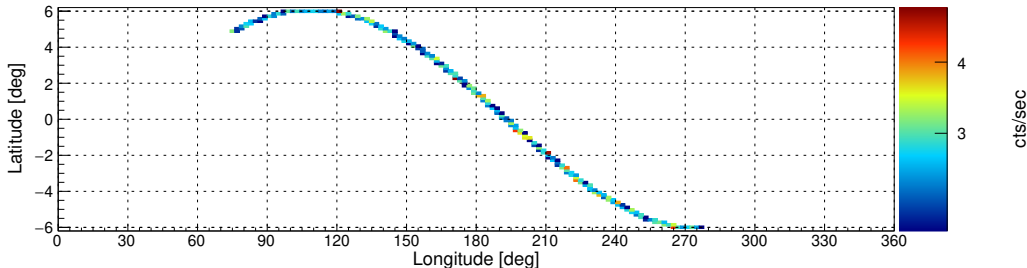
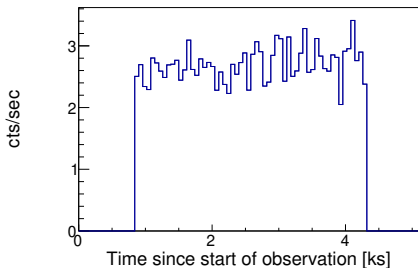


Target: GX_339m4_SLPA193 ID: 80601002004 Start: 2021-05-05 13:21:09 UTC Module: A

Filter options: SAA algorithm 2 (low-shield rate based using rms as evaluation metric), strict SAA cut

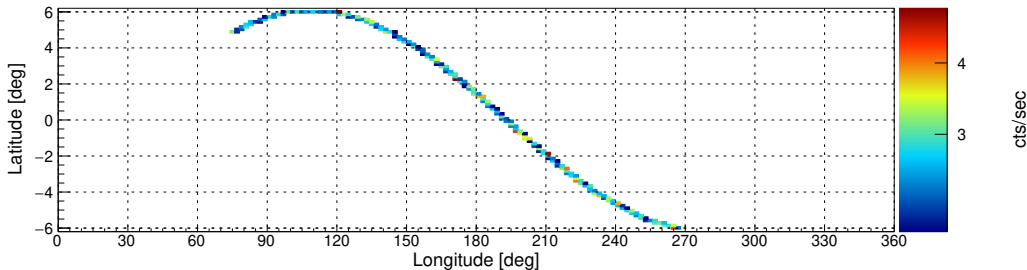
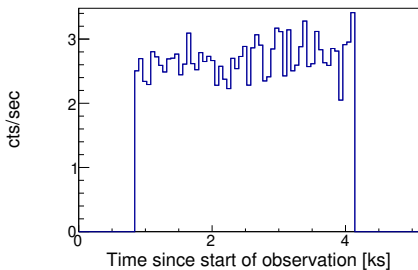
nucalcsaa options: nucalcsaa task not used!

Effective exposure time: 3488 sec (100.0%)



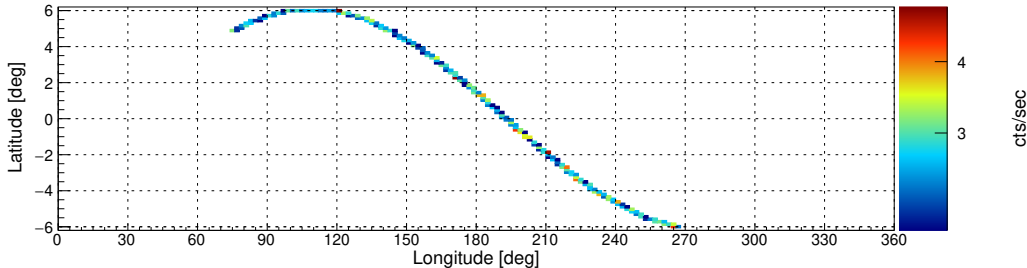
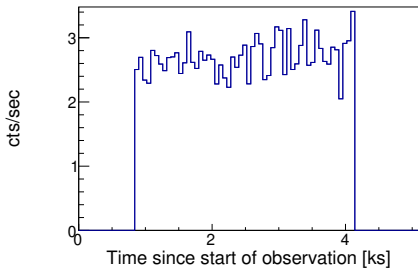
nucalcsaa options: --saacalc=2 --saamode=strict --tentacle=no

Effective exposure time: 3299 sec (94.58%)



nucalcsaa options: --saacalc=2 --saamode=strict --tentacle=yes

Effective exposure time: 3299 sec (94.58%)

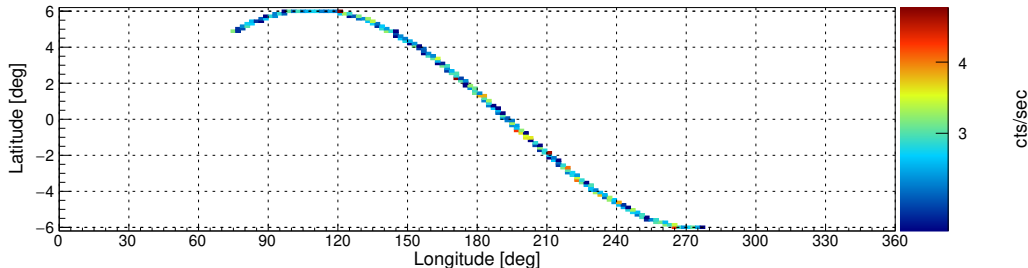
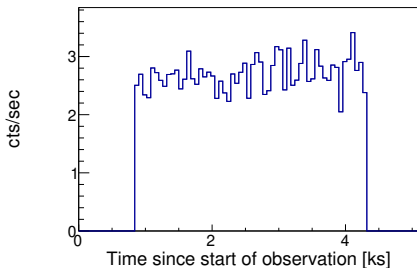


Target: GX_339m4_SLPA193 ID: 80601002004 Start: 2021-05-05 13:21:09 UTC Module: A

Filter options: SAA algorithm 3 (low-shield rate based using rms as evaluation metric), optimized SAA cut

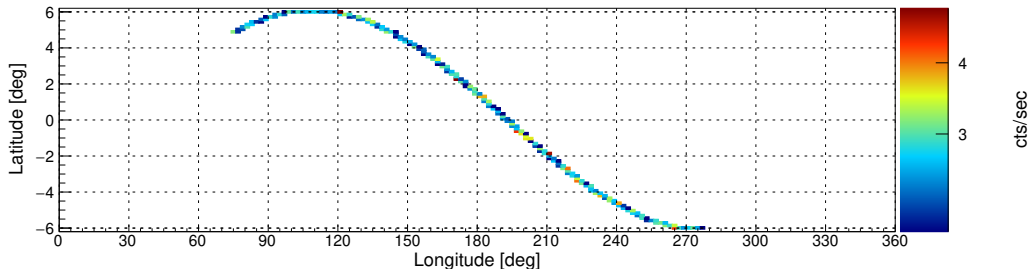
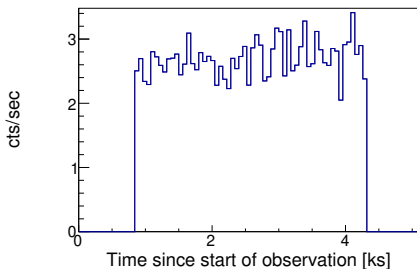
nucalcsaa options: nucalcsaa task not used!

Effective exposure time: 3488 sec (100.0%)



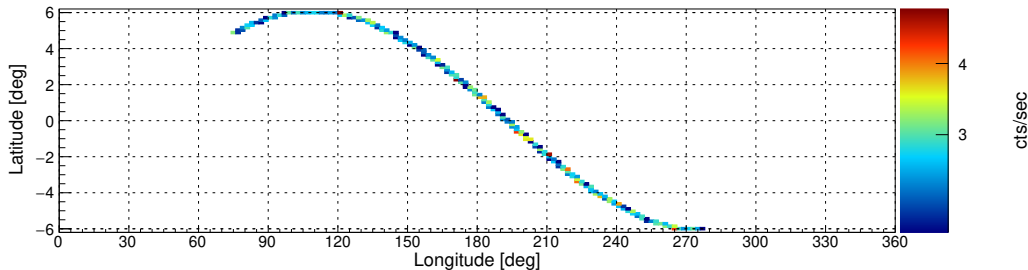
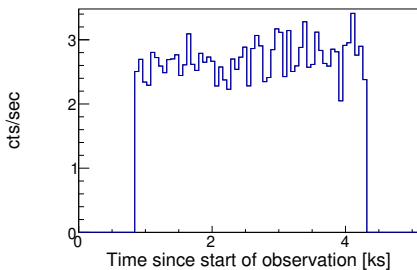
nucalcsaa options: --saacalc=3 --saamode=optimized --tentacle=no

Effective exposure time: 3488 sec (100%)



nucalcsaa options: --saacalc=3 --saamode=optimized --tentacle=yes

Effective exposure time: 3488 sec (100%)

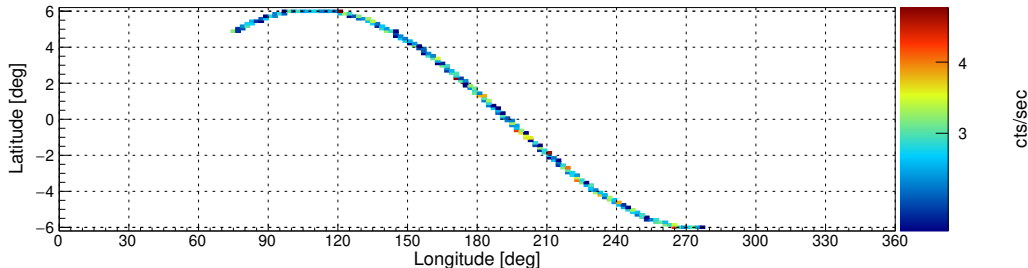
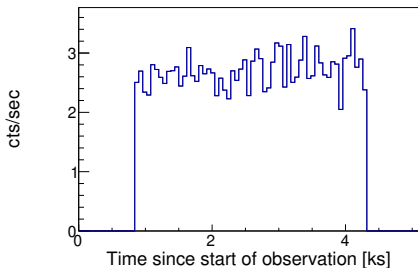


Target: GX_339m4_SLPA193 ID: 80601002004 Start: 2021-05-05 13:21:09 UTC Module: A

Filter options: SAA algorithm 3 (low-shield rate based using rms as evaluation metric), strict SAA cut

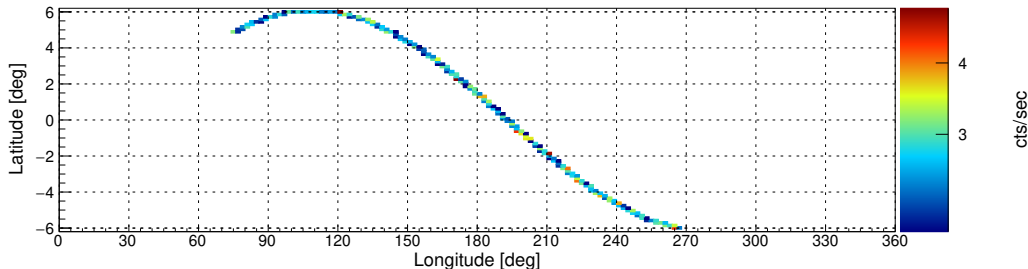
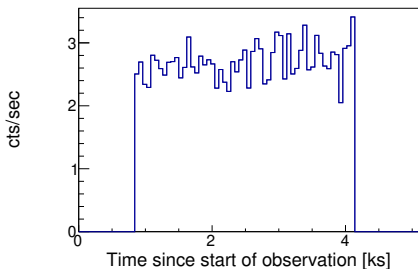
nucalcsaa options: nucalcsaa task not used!

Effective exposure time: 3488 sec (100.0%)



nucalcsaa options: --saacalc=3 --saamode=strict --tentacle=no

Effective exposure time: 3299 sec (94.58%)



nucalcsaa options: --saacalc=3 --saamode=strict --tentacle=yes

Effective exposure time: 3299 sec (94.58%)

