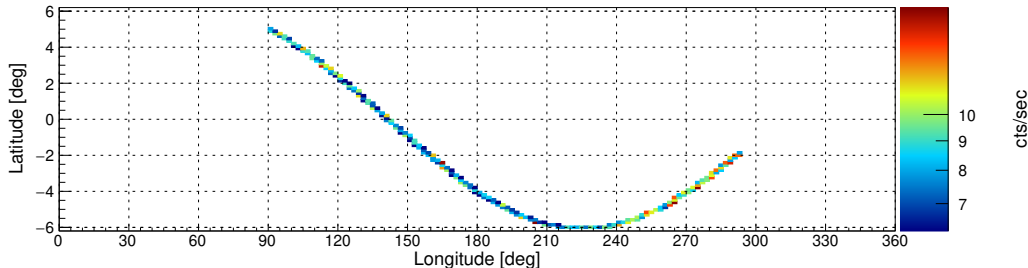
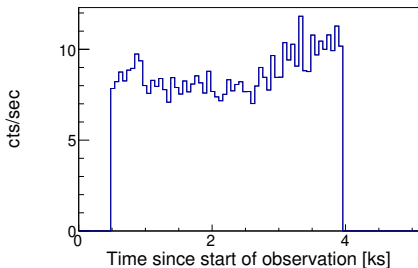


Target: MAXI\_J1348m630 ID: 80402315004 Start: 2019-02-01 14:21:09 UTC Module: B

Filter options: SAA algorithm 1 (high-shield rate based using a figure-of-merit as evaluation metric), optimized SAA cut

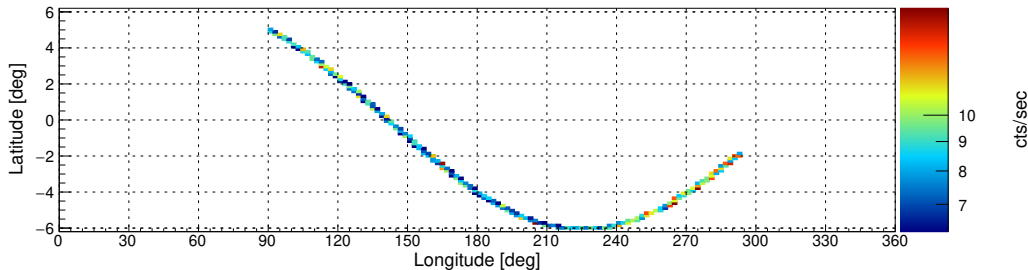
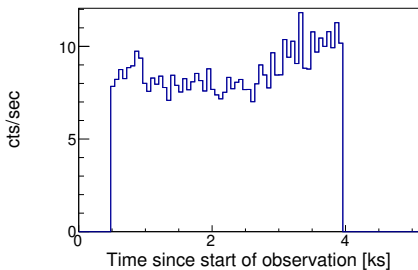
nucalcsaa options: nucalcsaa task not used!

Effective exposure time: 3498 sec (100.0%)



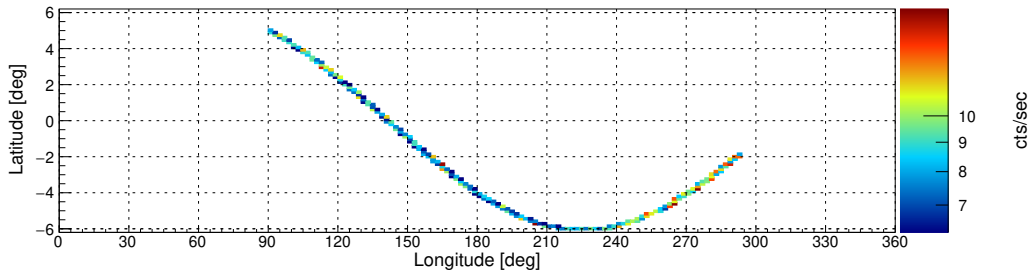
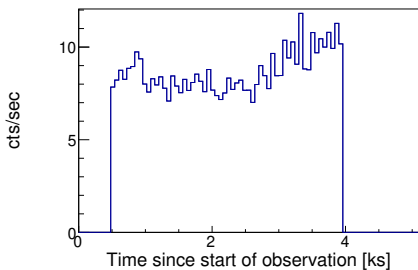
nucalcsaa options: --saacalc=1 --saamode=optimized --tentacle=no

Effective exposure time: 3498 sec (100%)



nucalcsaa options: --saacalc=1 --saamode=optimized --tentacle=yes

Effective exposure time: 3498 sec (100%)

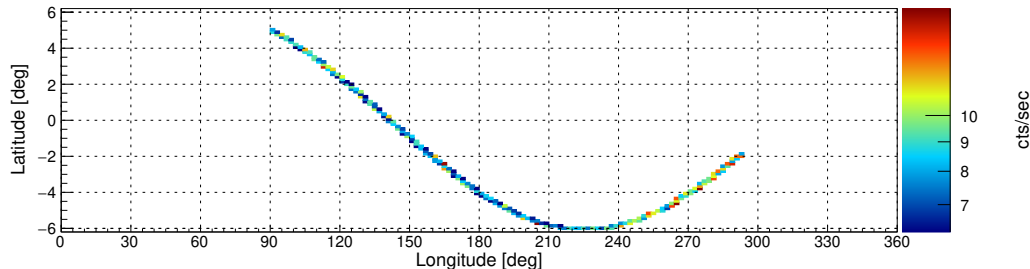
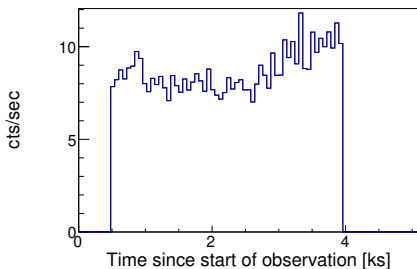


**Target: MAXI\_J1348m630 ID: 80402315004 Start: 2019-02-01 14:21:09 UTC Module: B**

**Filter options: SAA algorithm 1 (high-shield rate based using a figure-of-merit as evaluation metric), strict SAA cut**

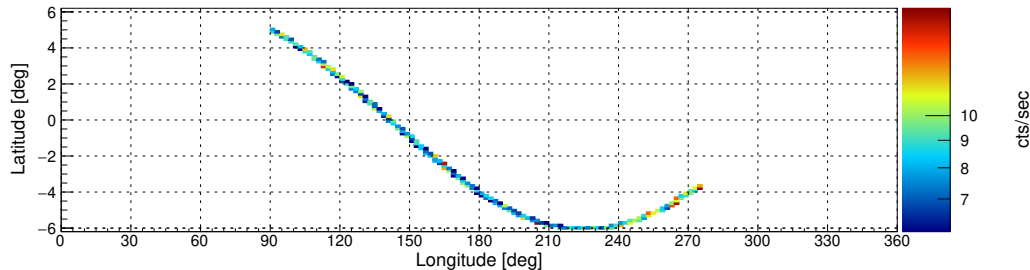
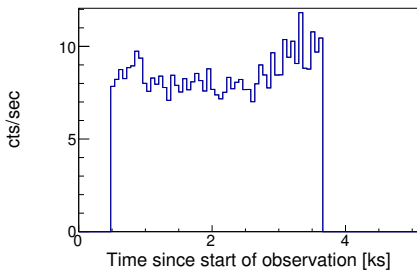
**nucalcsaa options: nucalcsaa task not used!**

**Effective exposure time: 3498 sec (100.0%)**



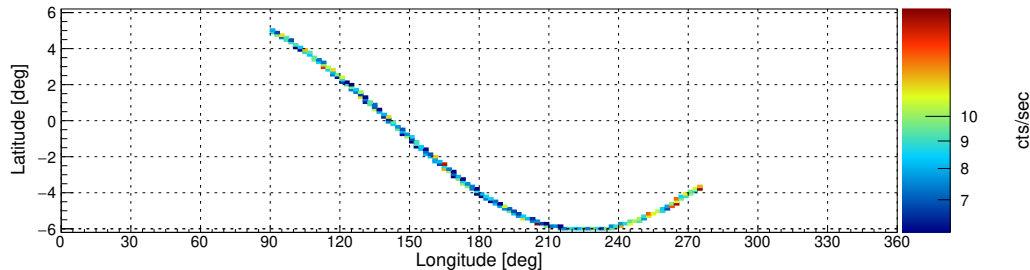
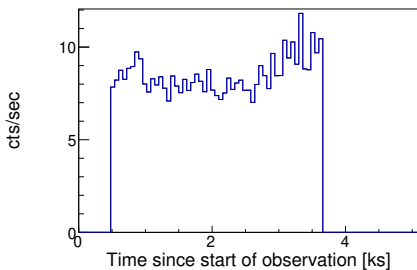
**nucalcsaa options: --saacalc=1 --saamode=strict --tentacle=no**

**Effective exposure time: 3197 sec (91.4%)**



**nucalcsaa options: --saacalc=1 --saamode=strict --tentacle=yes**

**Effective exposure time: 3197 sec (91.4%)**

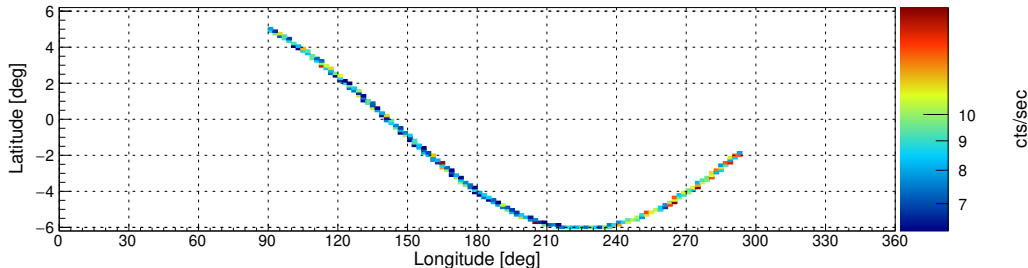
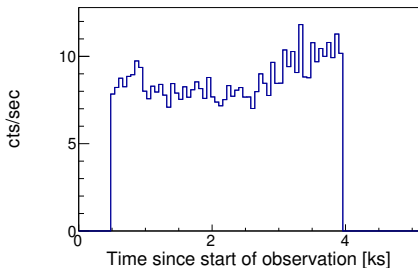


Target: MAXI\_J1348m630 ID: 80402315004 Start: 2019-02-01 14:21:09 UTC Module: B

Filter options: SAA algorithm 2 (low-shield rate based using rms as evaluation metric), optimized SAA cut

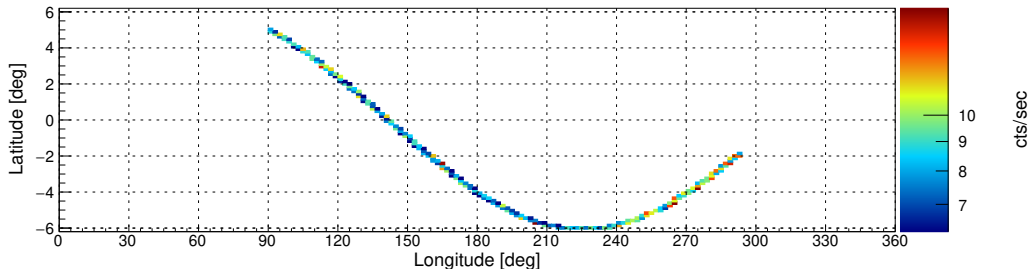
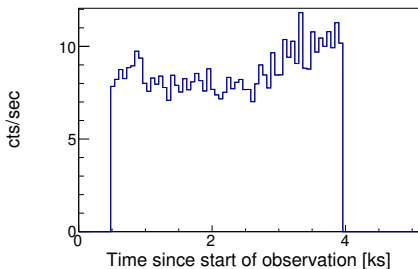
nucalcsaa options: nucalcsaa task not used!

Effective exposure time: 3498 sec (100.0%)



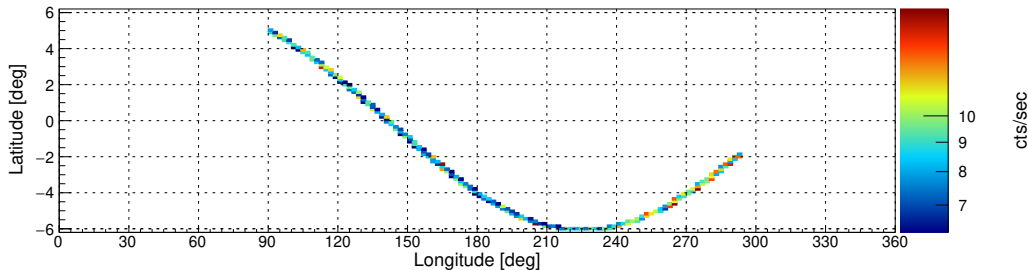
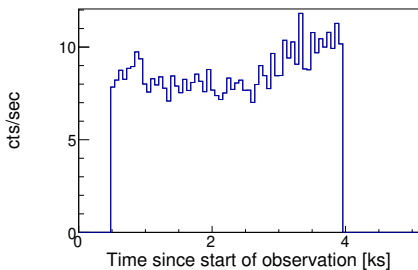
nucalcsaa options: --saacalc=2 --saamode=optimized --tentacle=no

Effective exposure time: 3498 sec (100%)



nucalcsaa options: --saacalc=2 --saamode=optimized --tentacle=yes

Effective exposure time: 3498 sec (100%)

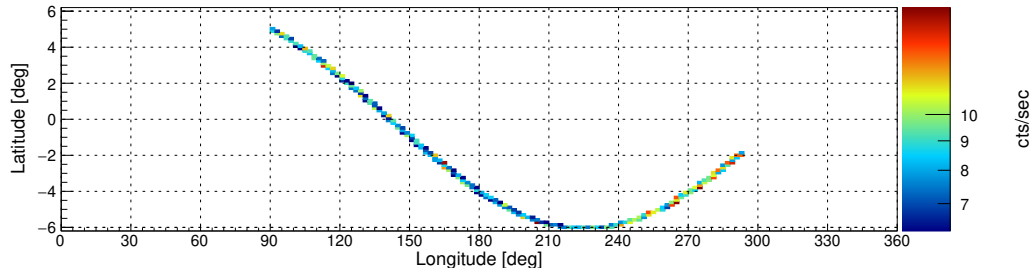
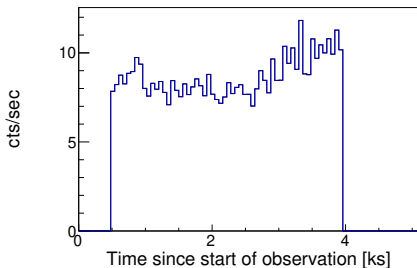


**Target: MAXI\_J1348m630 ID: 80402315004 Start: 2019-02-01 14:21:09 UTC Module: B**

**Filter options: SAA algorithm 2 (low-shield rate based using rms as evaluation metric), strict SAA cut**

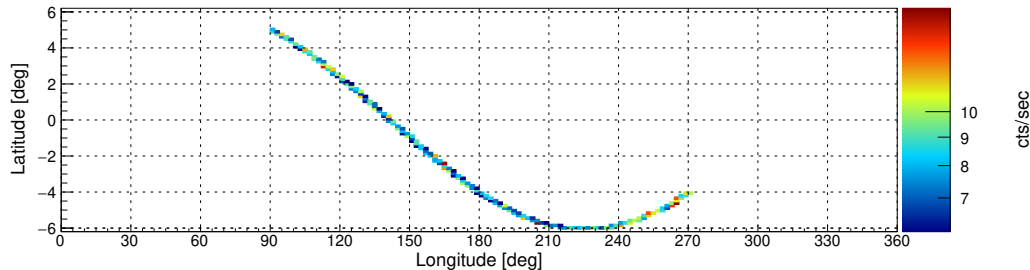
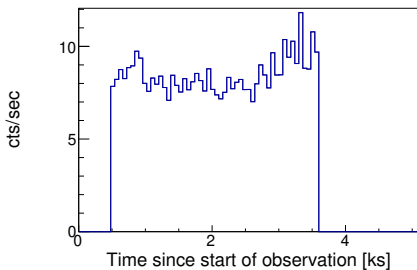
**nucalcsaa options: nucalcsaa task not used!**

**Effective exposure time: 3498 sec (100.0%)**



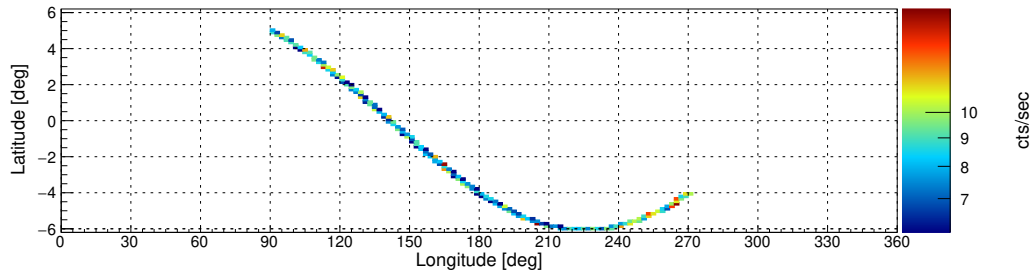
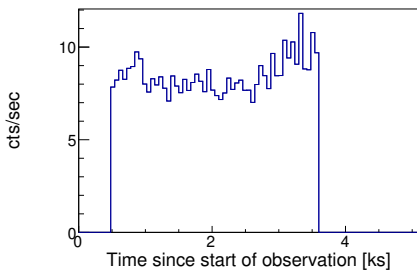
**nucalcsaa options: --saacalc=2 --saamode=strict --tentacle=no**

**Effective exposure time: 3112 sec (88.97%)**



**nucalcsaa options: --saacalc=2 --saamode=strict --tentacle=yes**

**Effective exposure time: 3112 sec (88.97%)**

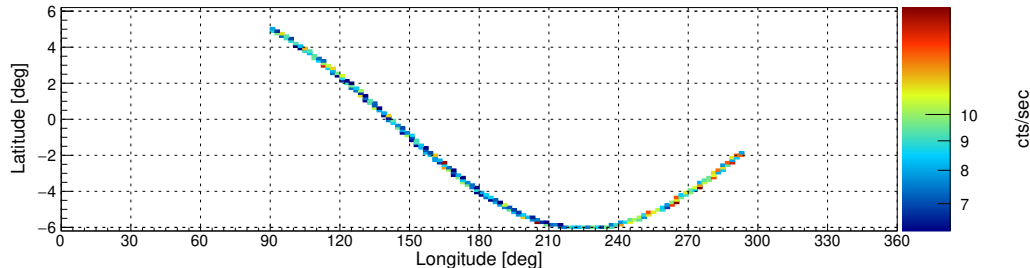
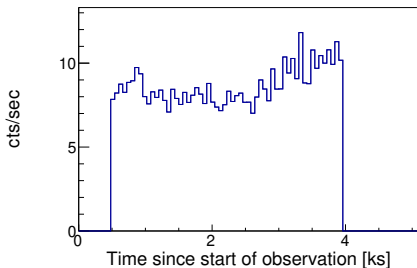


Target: MAXI\_J1348m630 ID: 80402315004 Start: 2019-02-01 14:21:09 UTC Module: B

Filter options: SAA algorithm 3 (low-shield rate based using rms as evaluation metric), optimized SAA cut

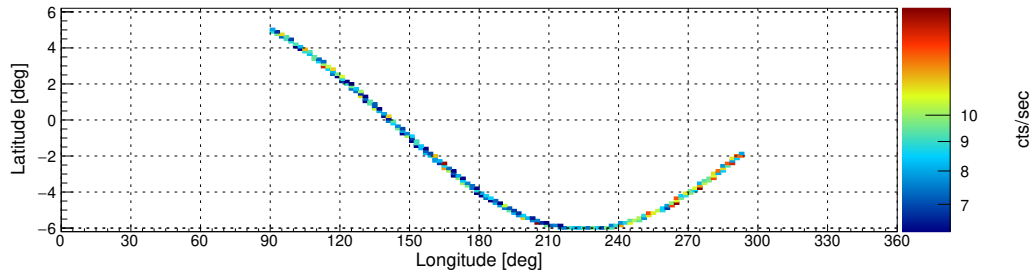
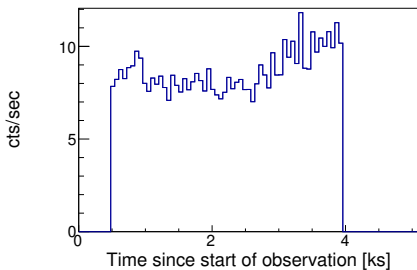
nucalcsaa options: nucalcsaa task not used!

Effective exposure time: 3498 sec (100.0%)



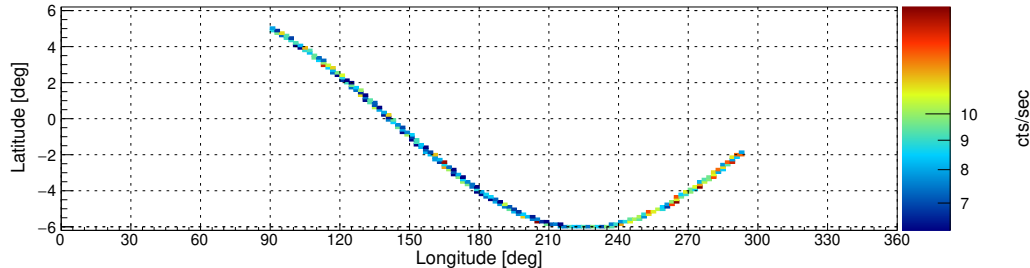
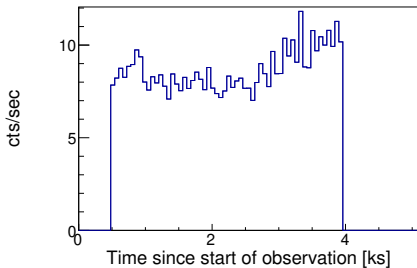
nucalcsaa options: --saacalc=3 --saamode=optimized --tentacle=no

Effective exposure time: 3498 sec (100%)



nucalcsaa options: --saacalc=3 --saamode=optimized --tentacle=yes

Effective exposure time: 3498 sec (100%)

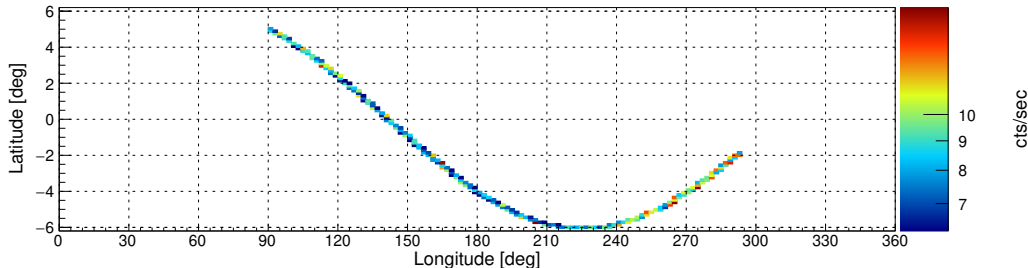
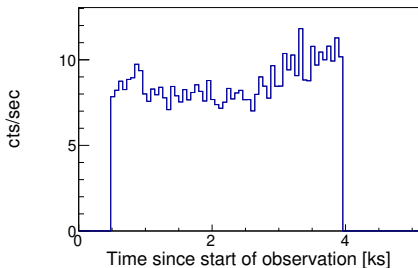


Target: MAXI\_J1348m630 ID: 80402315004 Start: 2019-02-01 14:21:09 UTC Module: B

Filter options: SAA algorithm 3 (low-shield rate based using rms as evaluation metric), strict SAA cut

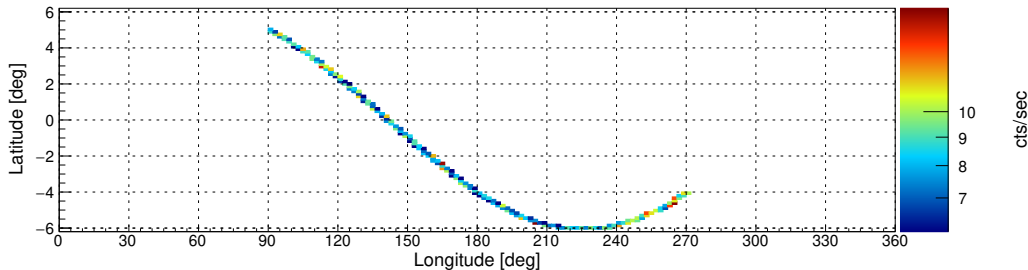
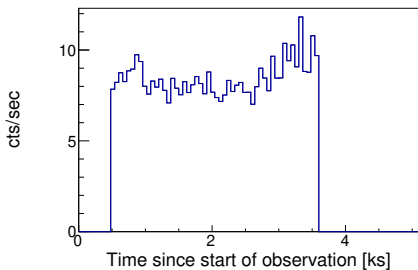
nucalcsaa options: nucalcsaa task not used!

Effective exposure time: 3498 sec (100.0%)



nucalcsaa options: --saacalc=3 --saamode=strict --tentacle=no

Effective exposure time: 3112 sec (88.97%)



nucalcsaa options: --saacalc=3 --saamode=strict --tentacle=yes

Effective exposure time: 3112 sec (88.97%)

