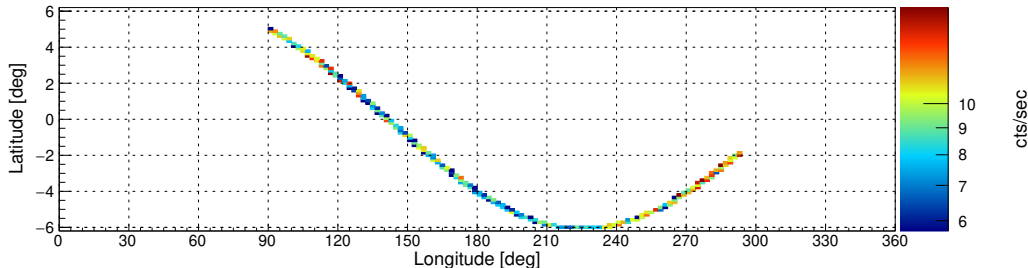
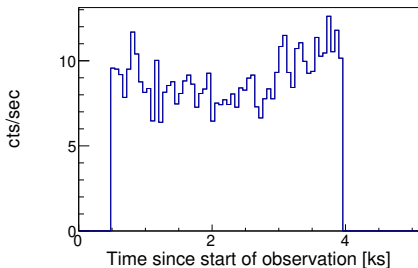


Target: MAXI\_J1348m630 ID: 80402315004 Start: 2019-02-01 14:21:09 UTC Module: A

Filter options: SAA algorithm 1 (high-shield rate based using a figure-of-merit as evaluation metric), optimized SAA cut

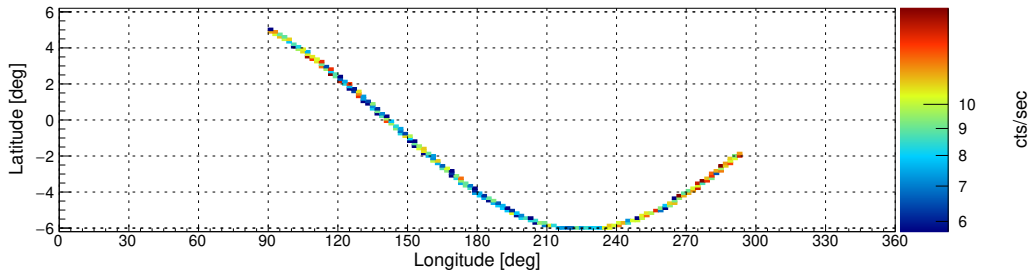
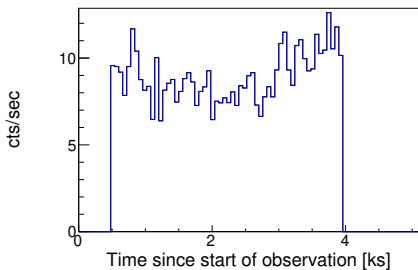
nucalcsaa options: nucalcsaa task not used!

Effective exposure time: 3497 sec (100.0%)



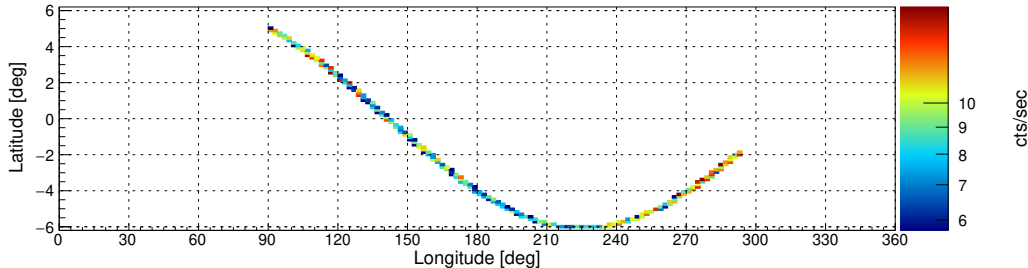
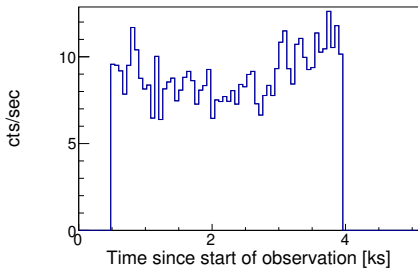
nucalcsaa options: --saacalc=1 --saamode=optimized --tentacle=no

Effective exposure time: 3497 sec (100%)



nucalcsaa options: --saacalc=1 --saamode=optimized --tentacle=yes

Effective exposure time: 3497 sec (100%)

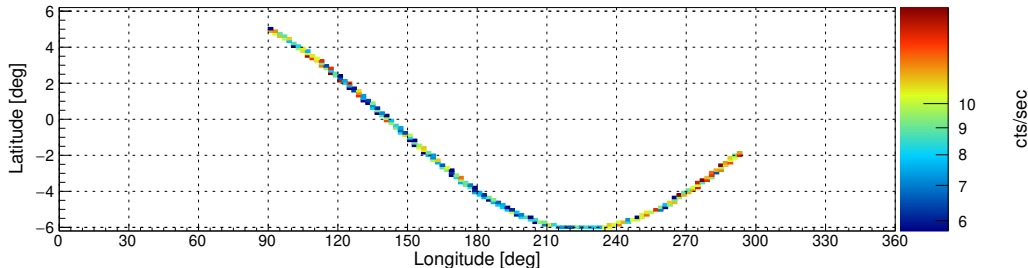
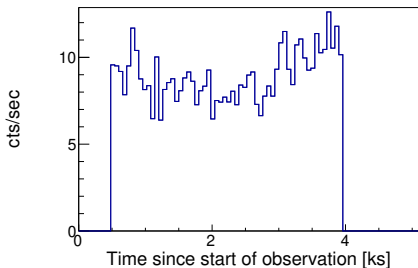


**Target: MAXI\_J1348m630 ID: 80402315004 Start: 2019-02-01 14:21:09 UTC Module: A**

**Filter options: SAA algorithm 1 (high-shield rate based using a figure-of-merit as evaluation metric), strict SAA cut**

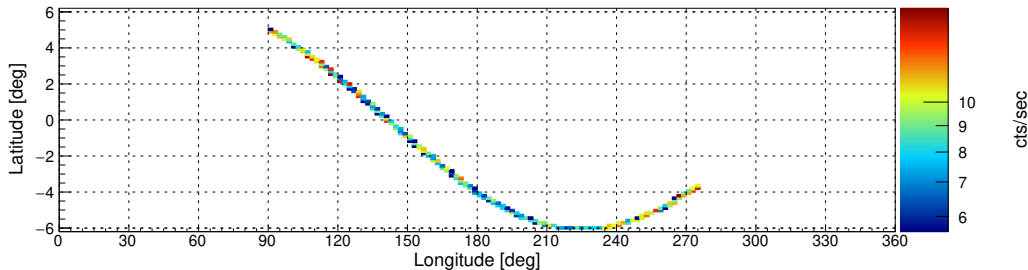
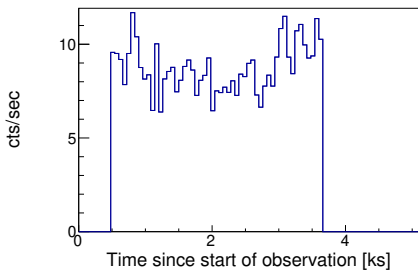
**nucalcsaa options: nucalcsaa task not used!**

**Effective exposure time: 3497 sec (100.0%)**



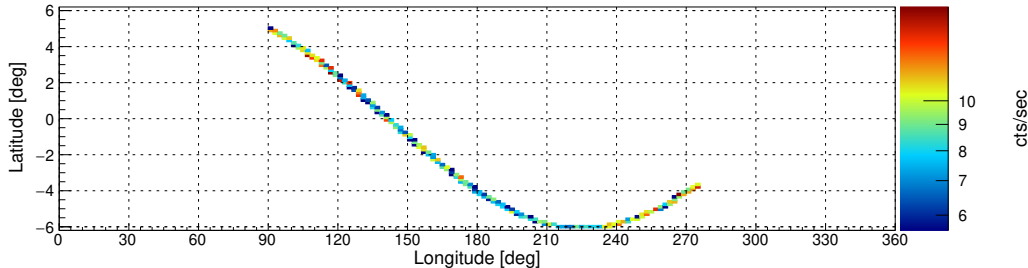
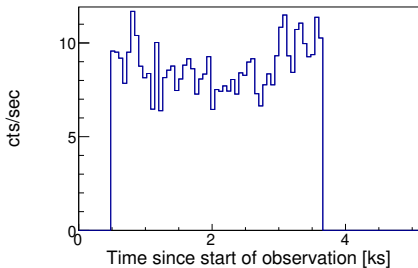
**nucalcsaa options: --saacalc=1 --saamode=strict --tentacle=no**

**Effective exposure time: 3178 sec (90.88%)**



**nucalcsaa options: --saacalc=1 --saamode=strict --tentacle=yes**

**Effective exposure time: 3178 sec (90.88%)**

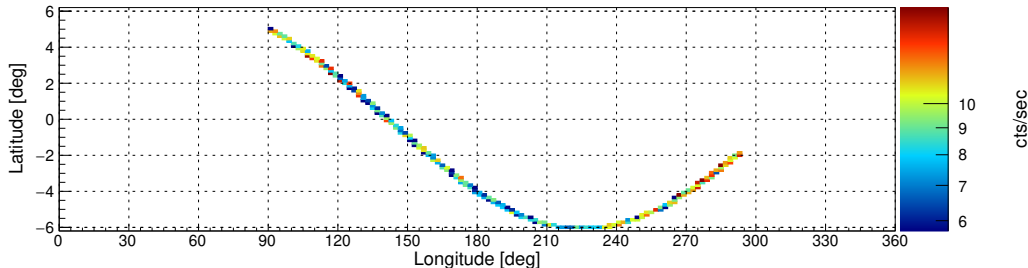
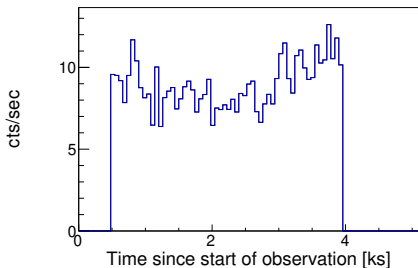


Target: MAXI\_J1348m630 ID: 80402315004 Start: 2019-02-01 14:21:09 UTC Module: A

Filter options: SAA algorithm 2 (low-shield rate based using rms as evaluation metric), optimized SAA cut

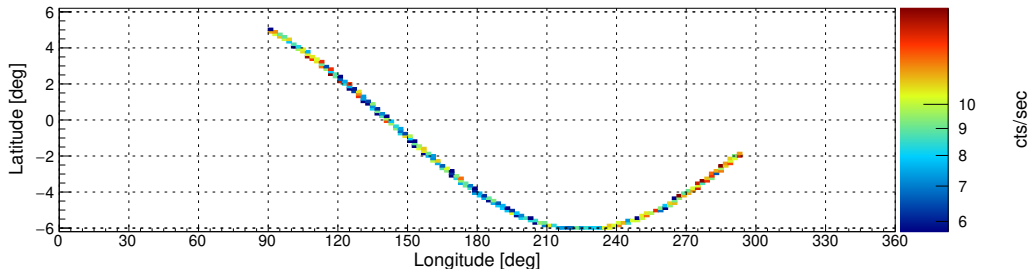
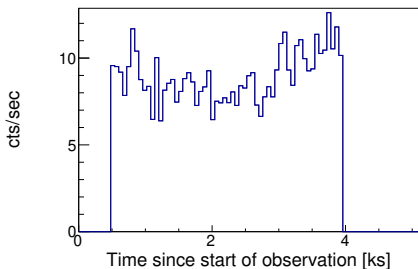
nucalcsaa options: nucalcsaa task not used!

Effective exposure time: 3497 sec (100.0%)



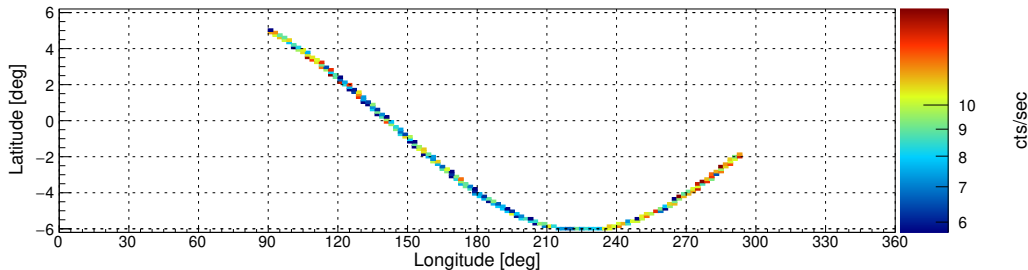
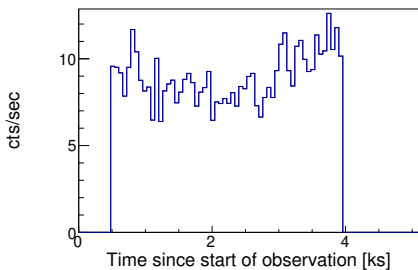
nucalcsaa options: --saacalc=2 --saamode=optimized --tentacle=no

Effective exposure time: 3497 sec (100%)



nucalcsaa options: --saacalc=2 --saamode=optimized --tentacle=yes

Effective exposure time: 3497 sec (100%)

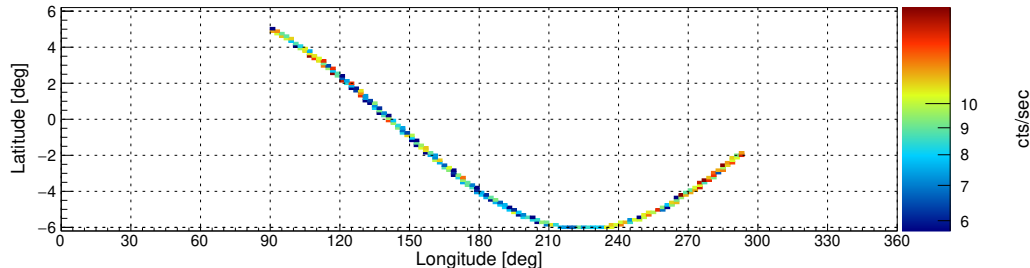
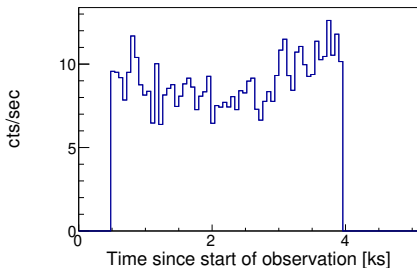


Target: MAXI\_J1348m630 ID: 80402315004 Start: 2019-02-01 14:21:09 UTC Module: A

Filter options: SAA algorithm 2 (low-shield rate based using rms as evaluation metric), strict SAA cut

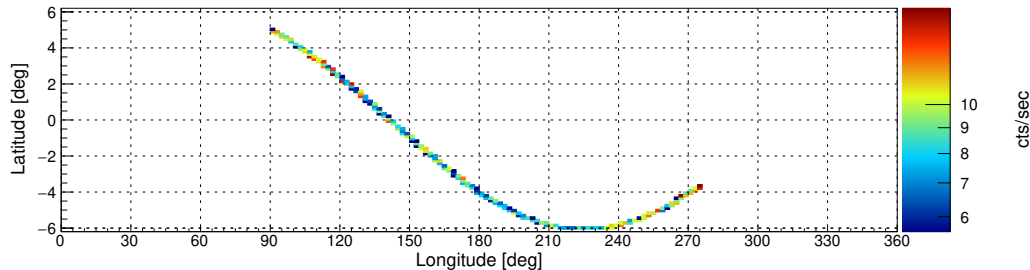
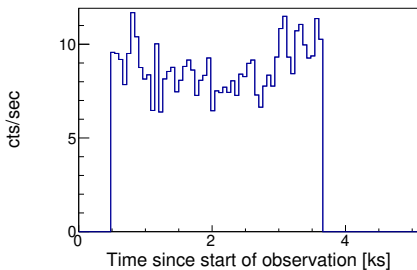
nucalcsaa options: nucalcsaa task not used!

Effective exposure time: 3497 sec (100.0%)



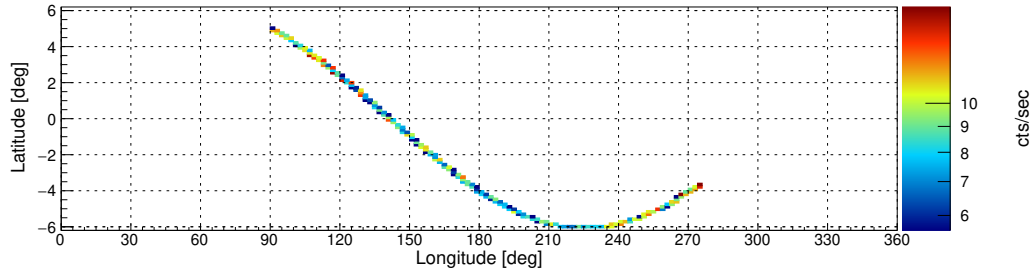
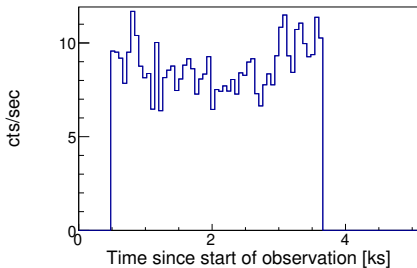
nucalcsaa options: --saacalc=2 --saamode=strict --tentacle=no

Effective exposure time: 3172 sec (90.71%)



nucalcsaa options: --saacalc=2 --saamode=strict --tentacle=yes

Effective exposure time: 3172 sec (90.71%)

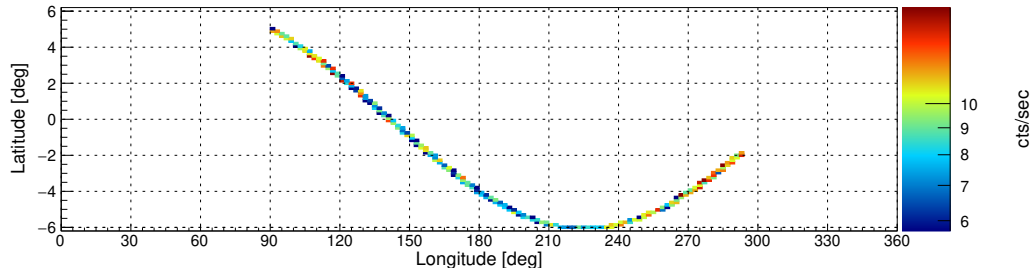
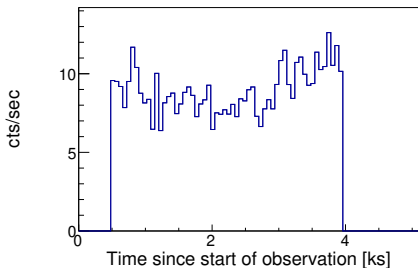


**Target: MAXI\_J1348m630 ID: 80402315004 Start: 2019-02-01 14:21:09 UTC Module: A**

**Filter options: SAA algorithm 3 (low-shield rate based using rms as evaluation metric), optimized SAA cut**

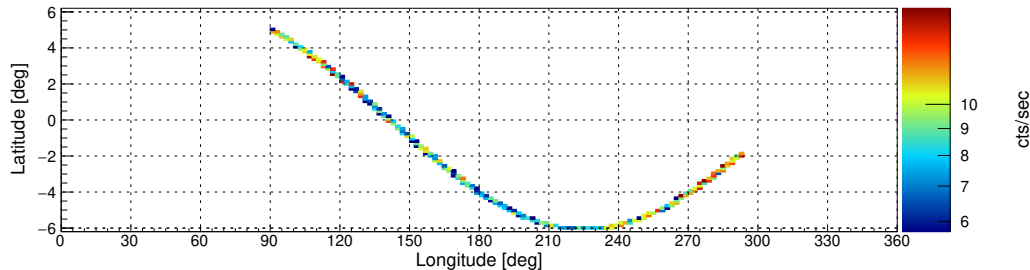
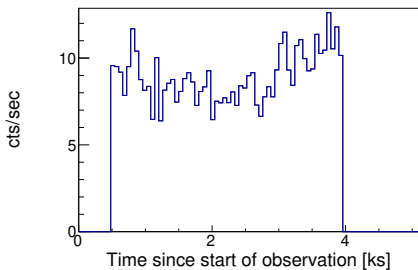
**nucalcsaa options: nucalcsaa task not used!**

**Effective exposure time: 3497 sec (100.0%)**



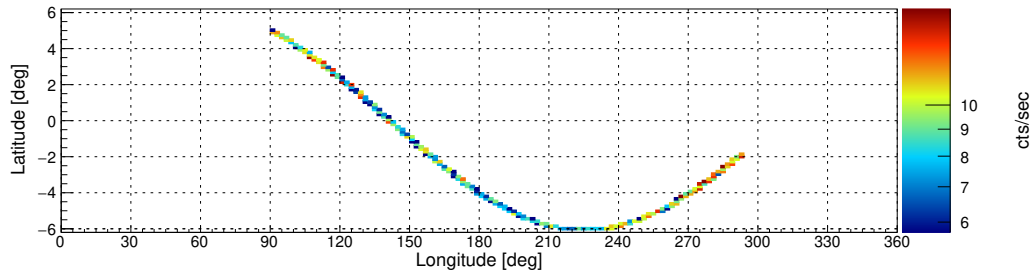
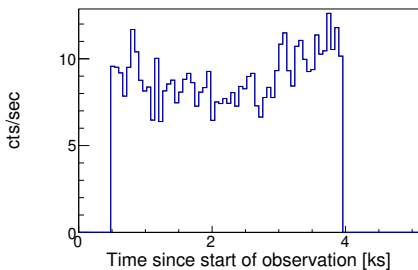
**nucalcsaa options: --saacalc=3 --saamode=optimized --tentacle=no**

**Effective exposure time: 3497 sec (100%)**



**nucalcsaa options: --saacalc=3 --saamode=optimized --tentacle=yes**

**Effective exposure time: 3497 sec (100%)**

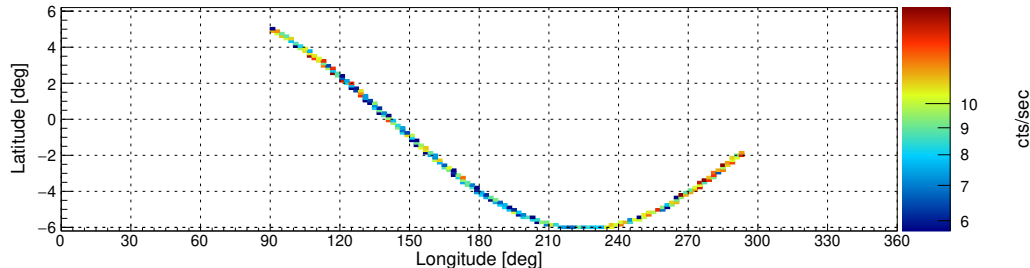
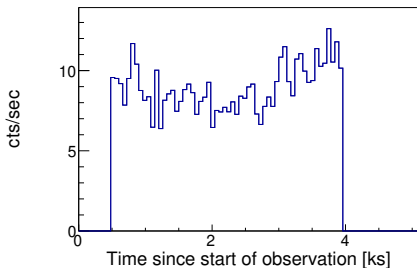


Target: MAXI\_J1348m630 ID: 80402315004 Start: 2019-02-01 14:21:09 UTC Module: A

Filter options: SAA algorithm 3 (low-shield rate based using rms as evaluation metric), strict SAA cut

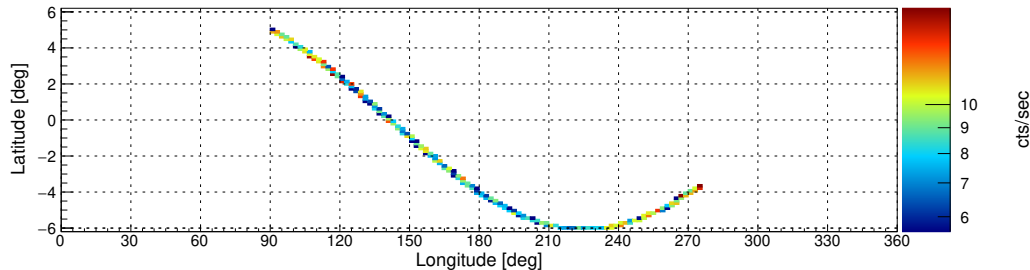
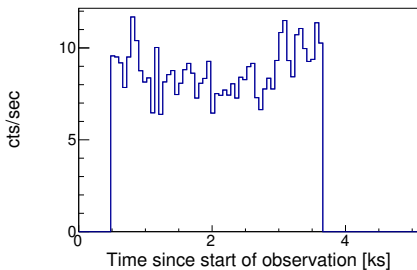
nucalcsaa options: nucalcsaa task not used!

Effective exposure time: 3497 sec (100.0%)



nucalcsaa options: --saacalc=3 --saamode=strict --tentacle=no

Effective exposure time: 3172 sec (90.71%)



nucalcsaa options: --saacalc=3 --saamode=strict --tentacle=yes

Effective exposure time: 3172 sec (90.71%)

