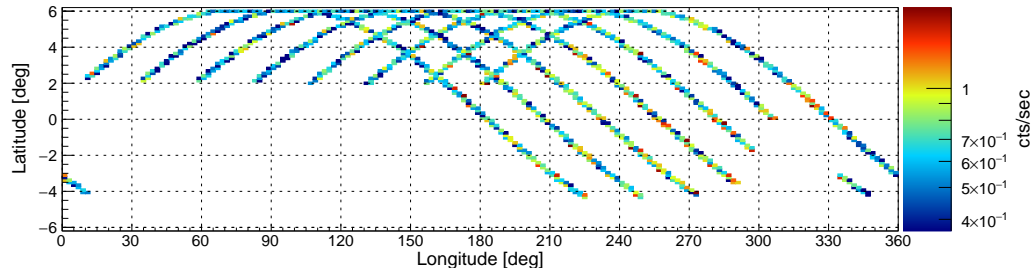
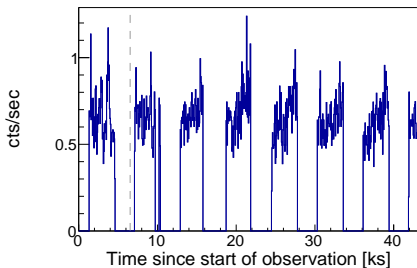


Filter options: SAA algorithm 1 (high-shield rate based using a figure-of-merit as evaluation metric), optimized SAA cut

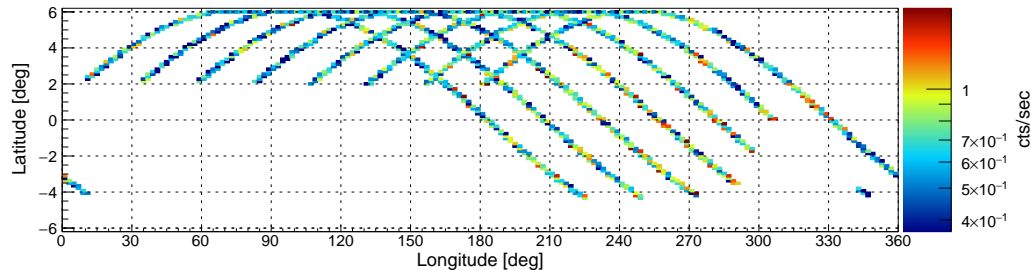
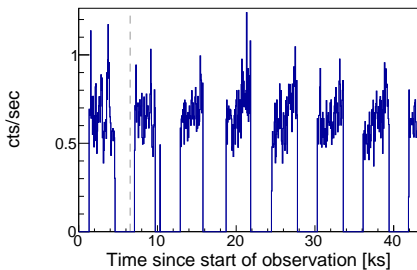
nucalcsaa options: nucalcsaa task not used!

Effective exposure time: 23287 sec (100.0%)



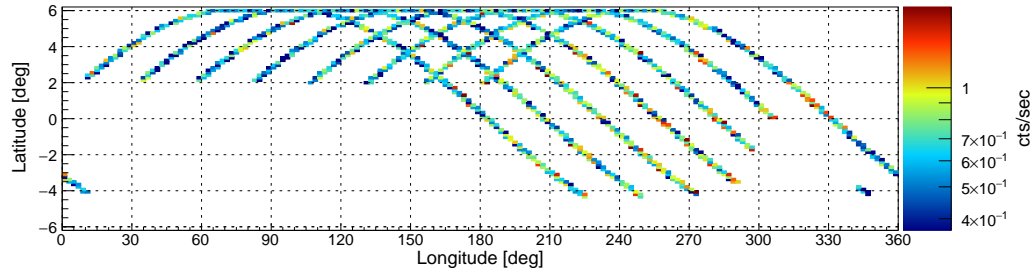
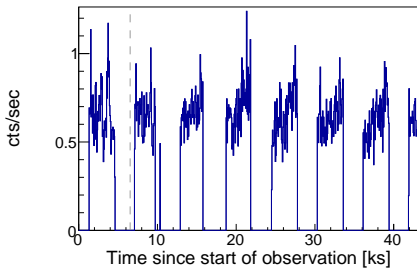
nucalcsaa options: --saacalc=1 --saamode=optimized --tentacle=no

Effective exposure time: 23160 sec (99.45%)



nucalcsaa options: --saacalc=1 --saamode=optimized --tentacle=yes

Effective exposure time: 23160 sec (99.45%)

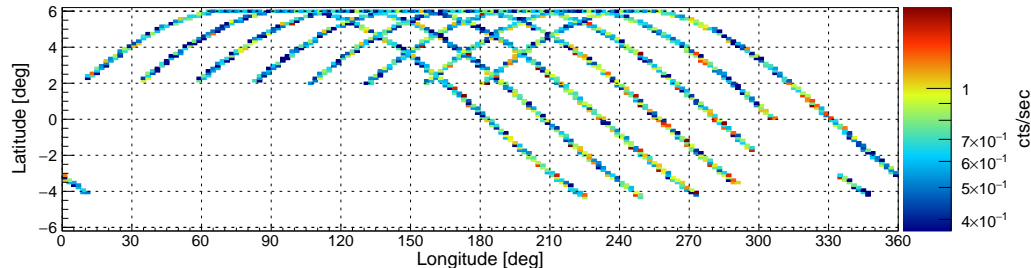
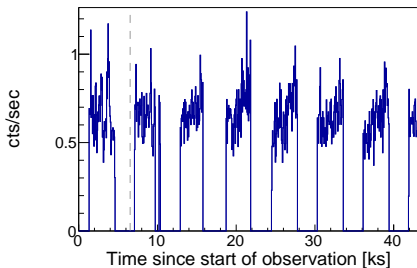


Target: Mrk1018 ID: 60160087002 Start: 2016-02-10 22:11:08 UTC Module: A

Filter options: SAA algorithm 1 (high-shield rate based using a figure-of-merit as evaluation metric), strict SAA cut

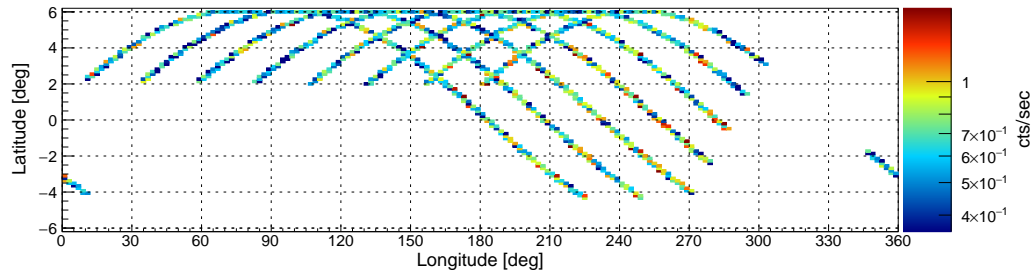
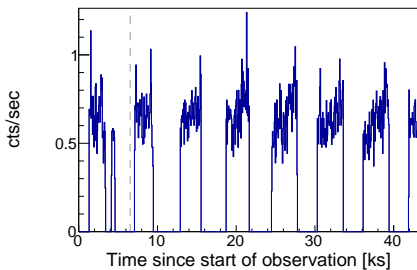
nucalcsaa options: nucalcsaa task not used!

Effective exposure time: 23287 sec (100.0%)



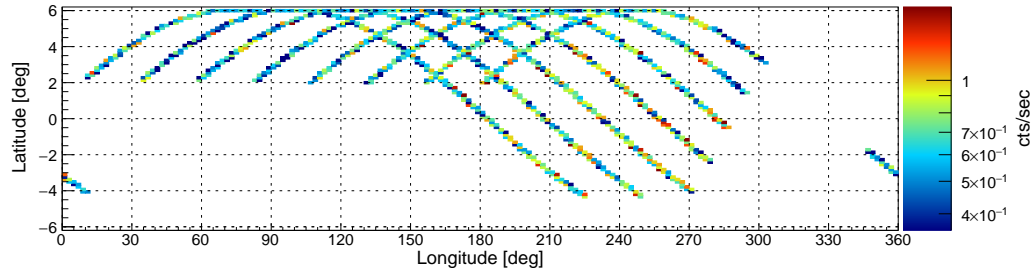
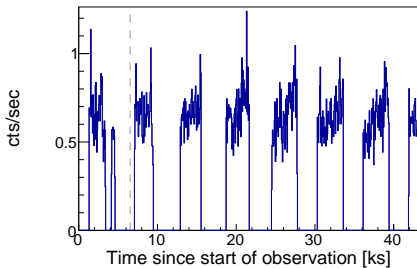
nucalcsaa options: --saacalc=1 --saamode=strict --tentacle=no

Effective exposure time: 21646 sec (92.95%)



nucalcsaa options: --saacalc=1 --saamode=strict --tentacle=yes

Effective exposure time: 21646 sec (92.95%)

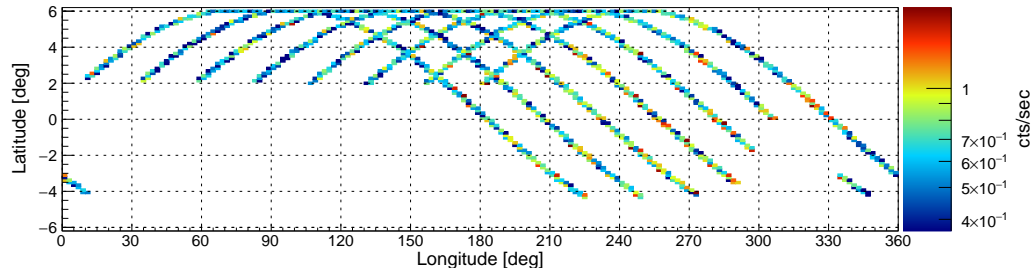
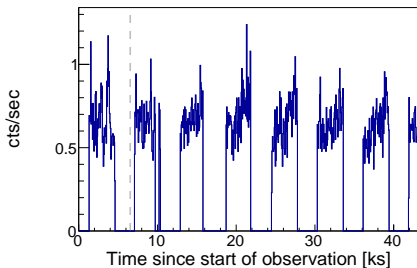


Target: Mrk1018 ID: 60160087002 Start: 2016-02-10 22:11:08 UTC Module: A

Filter options: SAA algorithm 2 (low-shield rate based using rms as evaluation metric), optimized SAA cut

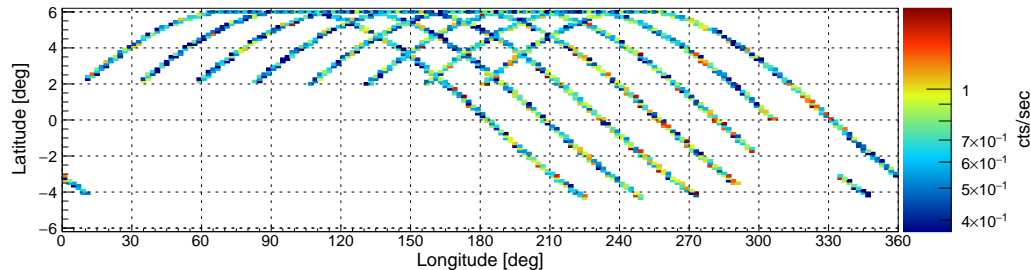
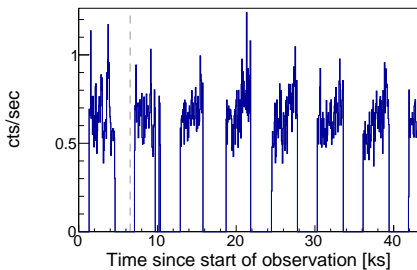
nucalcsaa options: nucalcsaa task not used!

Effective exposure time: 23287 sec (100.0%)



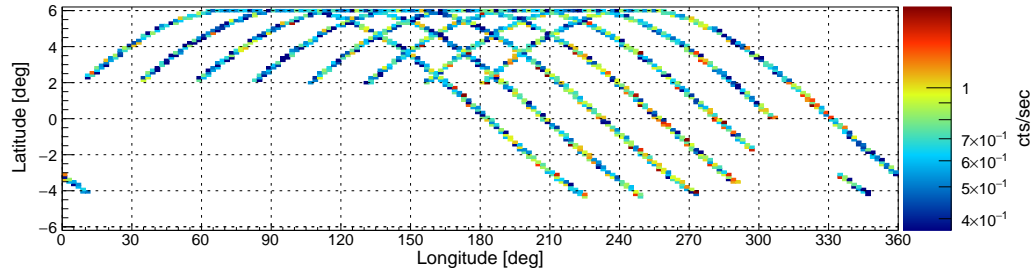
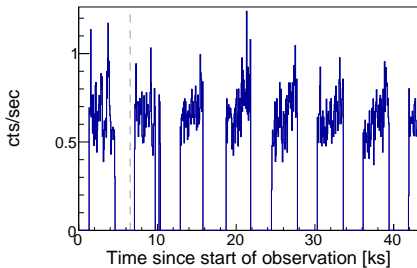
nucalcsaa options: --saacalc=2 --saamode=optimized --tentacle=no

Effective exposure time: 23287 sec (100%)



nucalcsaa options: --saacalc=2 --saamode=optimized --tentacle=yes

Effective exposure time: 23287 sec (100%)

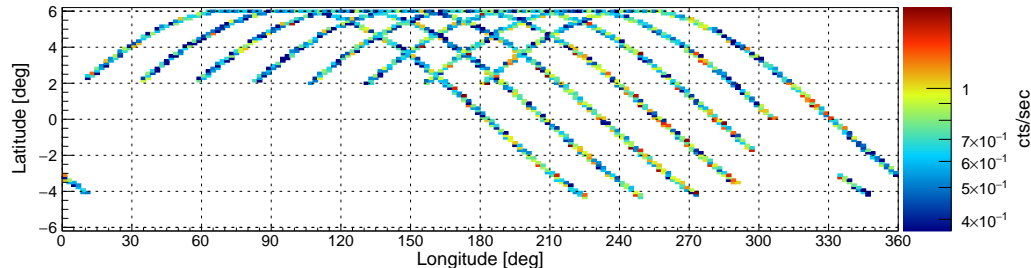
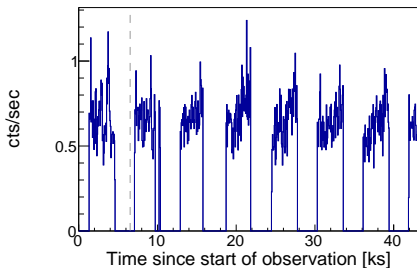


Target: Mrk1018 ID: 60160087002 Start: 2016-02-10 22:11:08 UTC Module: A

Filter options: SAA algorithm 2 (low-shield rate based using rms as evaluation metric), strict SAA cut

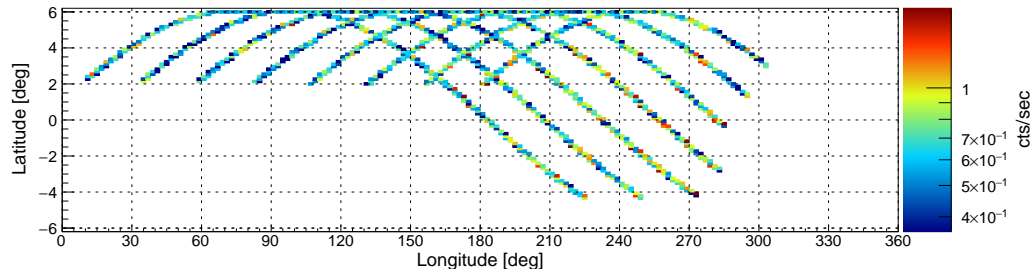
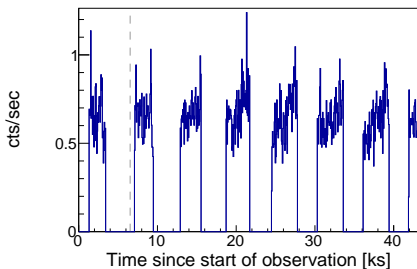
nucalcsaa options: nucalcsaa task not used!

Effective exposure time: 23287 sec (100.0%)



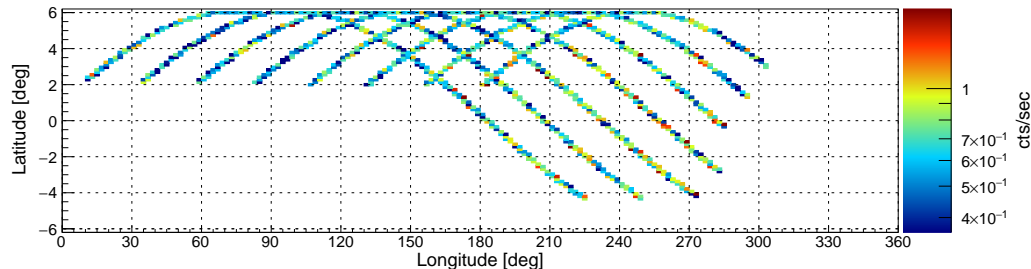
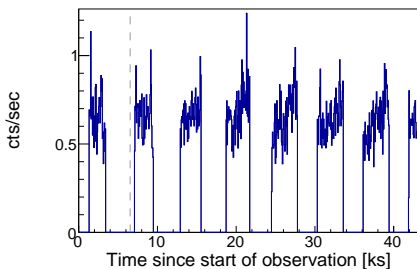
nucalcsaa options: --saacalc=2 --saamode=strict --tentacle=no

Effective exposure time: 21315 sec (91.53%)



nucalcsaa options: --saacalc=2 --saamode=strict --tentacle=yes

Effective exposure time: 21315 sec (91.53%)

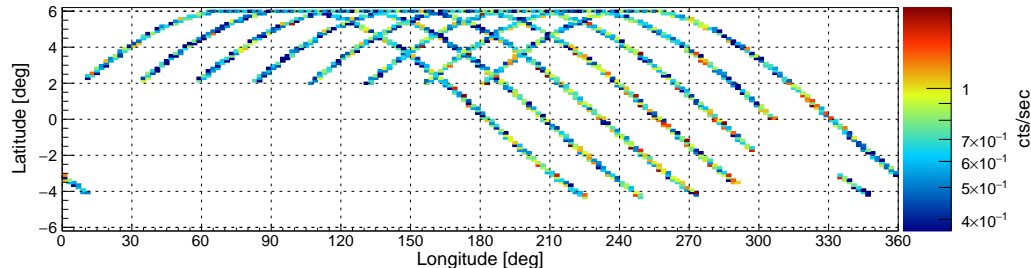
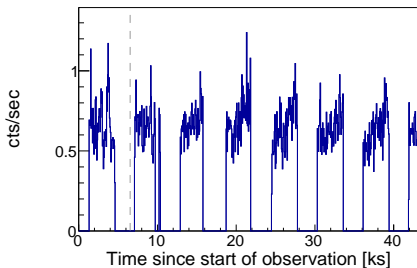


Target: Mrk1018 ID: 60160087002 Start: 2016-02-10 22:11:08 UTC Module: A

Filter options: SAA algorithm 3 (low-shield rate based using rms as evaluation metric), optimized SAA cut

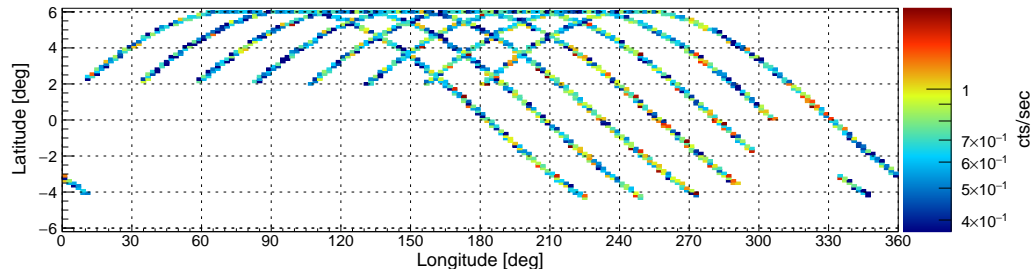
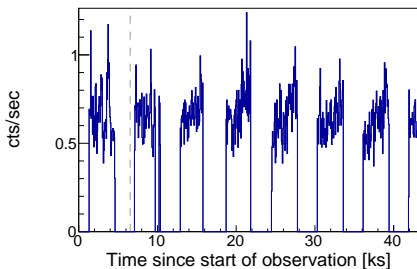
nucalcsaa options: nucalcsaa task not used!

Effective exposure time: 23287 sec (100.0%)



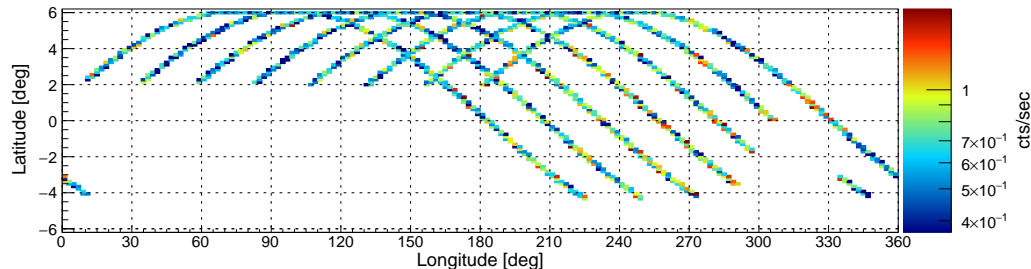
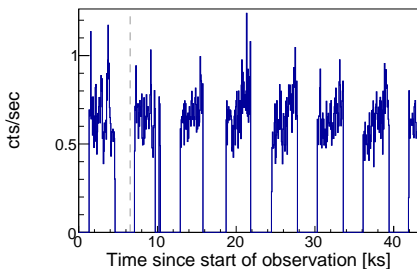
nucalcsaa options: --saacalc=3 --saamode=optimized --tentacle=no

Effective exposure time: 23287 sec (100%)



nucalcsaa options: --saacalc=3 --saamode=optimized --tentacle=yes

Effective exposure time: 23287 sec (100%)

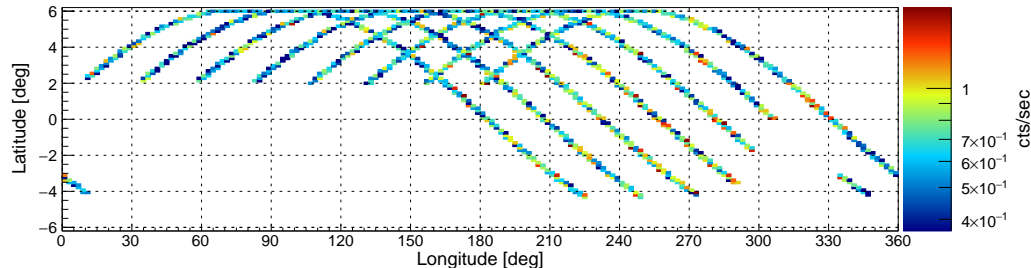
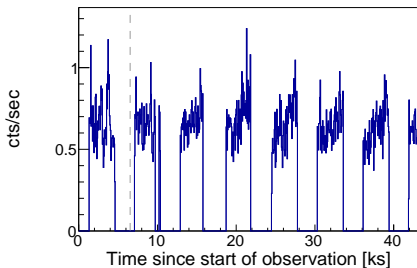


Target: Mrk1018 ID: 60160087002 Start: 2016-02-10 22:11:08 UTC Module: A

Filter options: SAA algorithm 3 (low-shield rate based using rms as evaluation metric), strict SAA cut

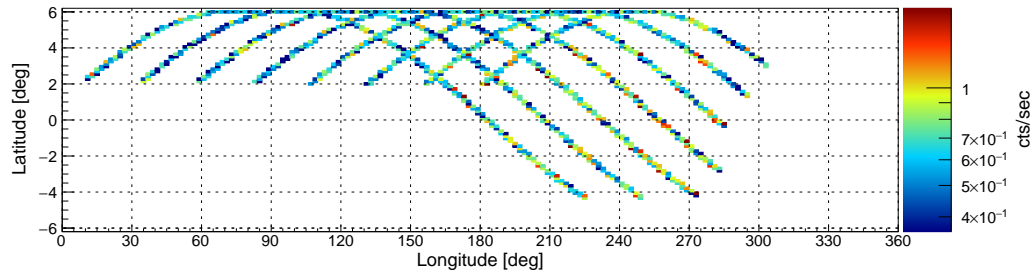
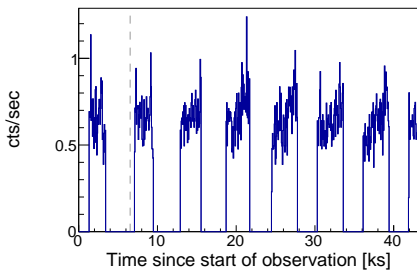
nucalcsaa options: nucalcsaa task not used!

Effective exposure time: 23287 sec (100.0%)



nucalcsaa options: --saacalc=3 --saamode=strict --tentacle=no

Effective exposure time: 21315 sec (91.53%)



nucalcsaa options: --saacalc=3 --saamode=strict --tentacle=yes

Effective exposure time: 21315 sec (91.53%)

