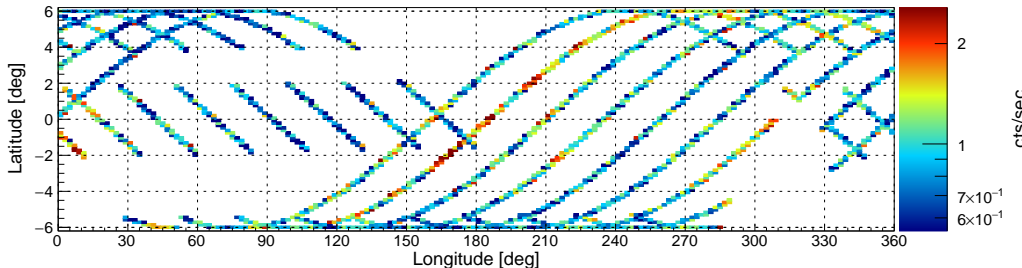
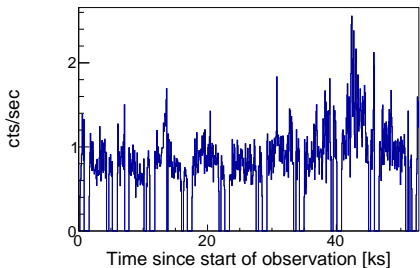


Filter options: SAA algorithm 1 (high-shield rate based using a figure-of-merit as evaluation metric), optimized SAA cut

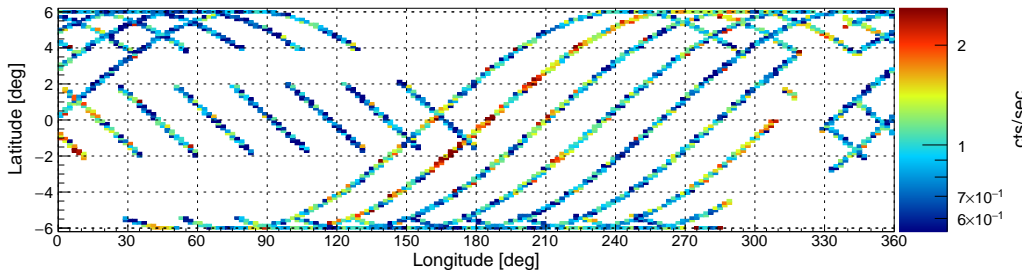
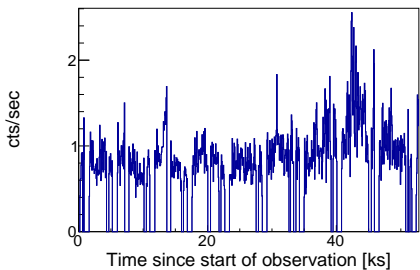
nucalcsaa options: nucalcsaa task not used!

Effective exposure time: 41071 sec (100.0%)



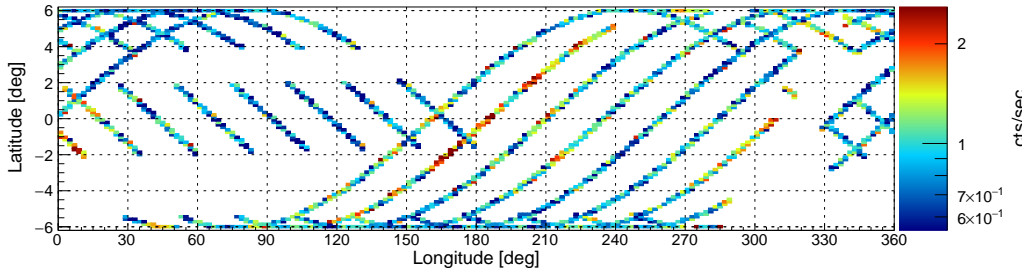
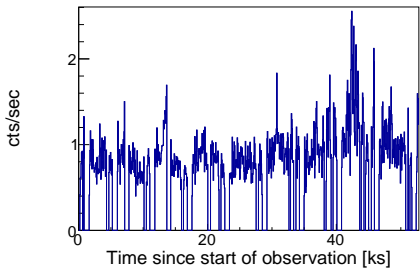
nucalcsaa options: --saacalc=1 --saamode=optimized --tentacle=no

Effective exposure time: 39838 sec (97%)



nucalcsaa options: --saacalc=1 --saamode=optimized --tentacle=yes

Effective exposure time: 39034 sec (95.04%)

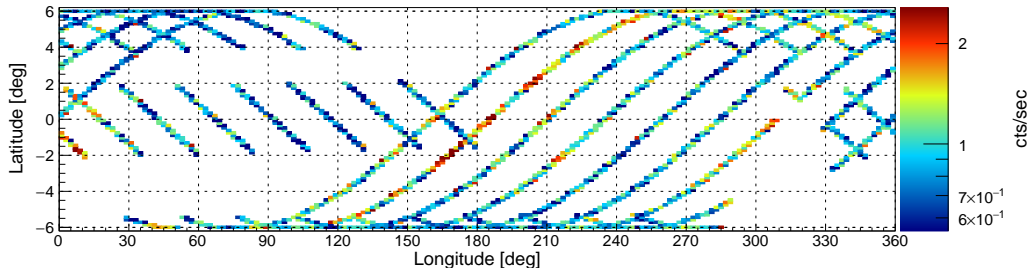
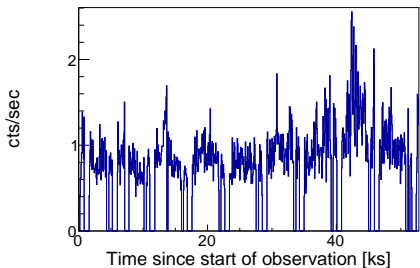


Target: GX_301m2 ID: 30101042002 Start: 2015-10-04 08:01:08 UTC Module: A

Filter options: SAA algorithm 1 (high-shield rate based using a figure-of-merit as evaluation metric), strict SAA cut

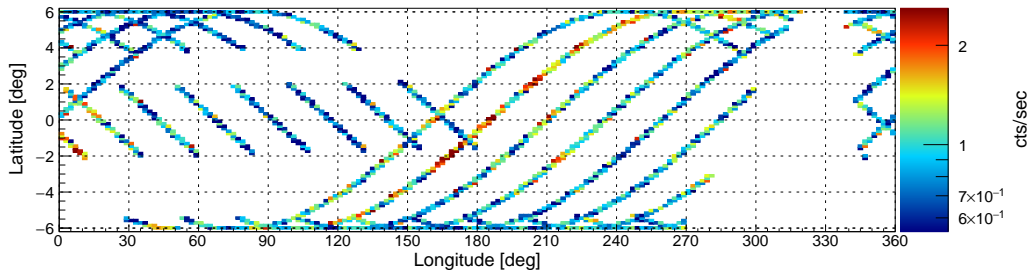
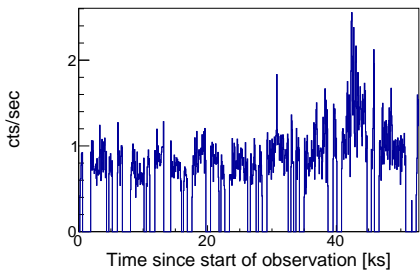
nucalcsaa options: nucalcsaa task not used!

Effective exposure time: 41071 sec (100.0%)



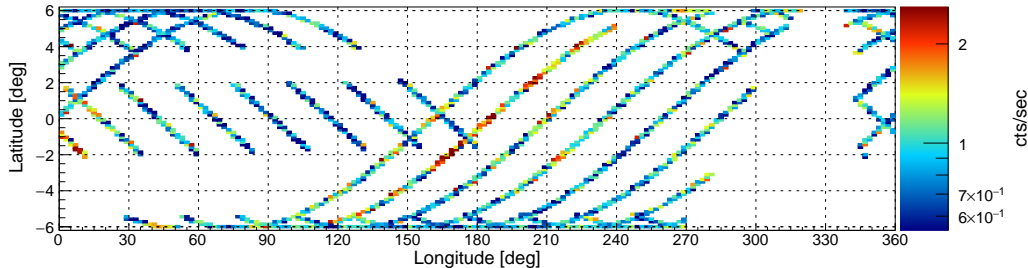
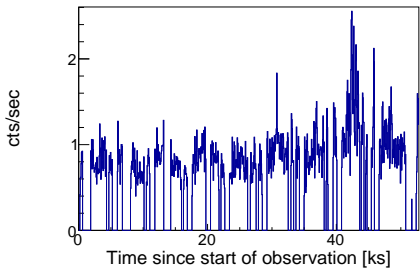
nucalcsaa options: --saacalc=1 --saamode=strict --tentacle=no

Effective exposure time: 36374 sec (88.56%)



nucalcsaa options: --saacalc=1 --saamode=strict --tentacle=yes

Effective exposure time: 35570 sec (86.61%)

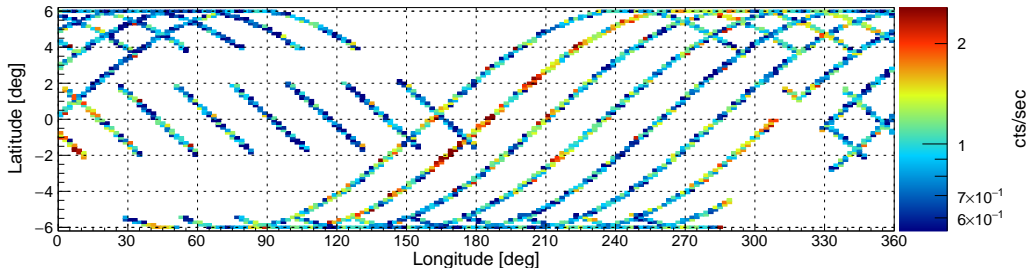
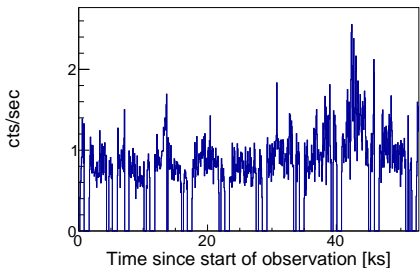


Target: GX_301m2 ID: 30101042002 Start: 2015-10-04 08:01:08 UTC Module: A

Filter options: SAA algorithm 2 (low-shield rate based using rms as evaluation metric), optimized SAA cut

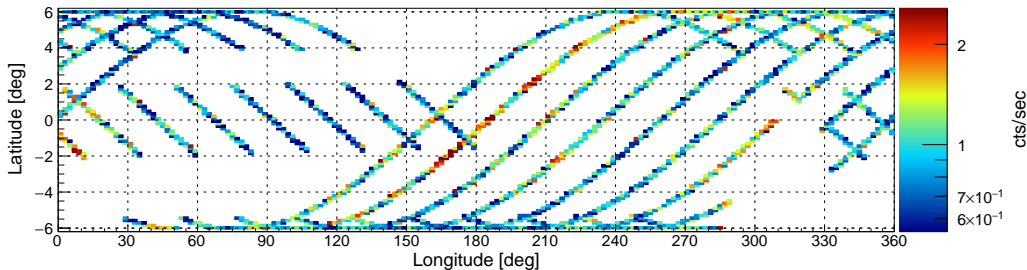
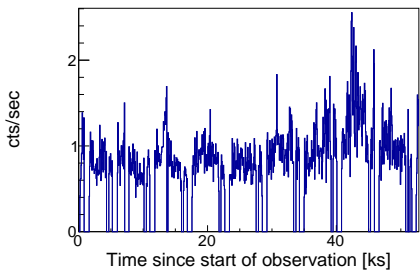
nucalcsaa options: nucalcsaa task not used!

Effective exposure time: 41071 sec (100.0%)



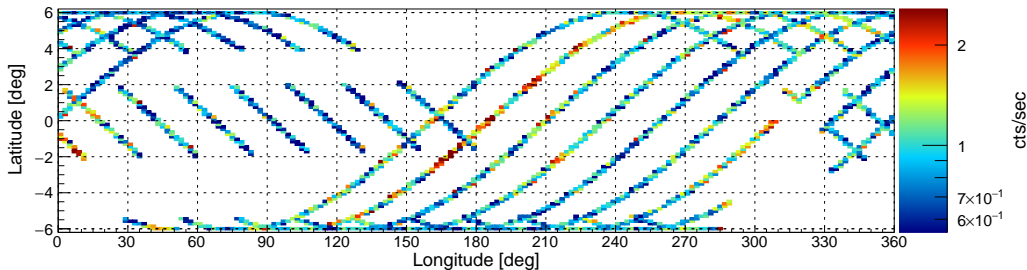
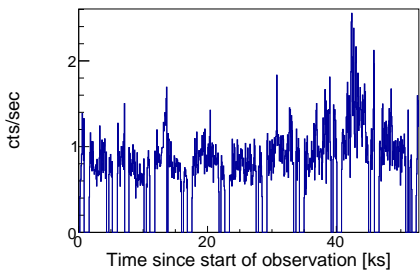
nucalcsaa options: --saacalc=2 --saamode=optimized --tentacle=no

Effective exposure time: 41071 sec (100%)



nucalcsaa options: --saacalc=2 --saamode=optimized --tentacle=yes

Effective exposure time: 41071 sec (100%)

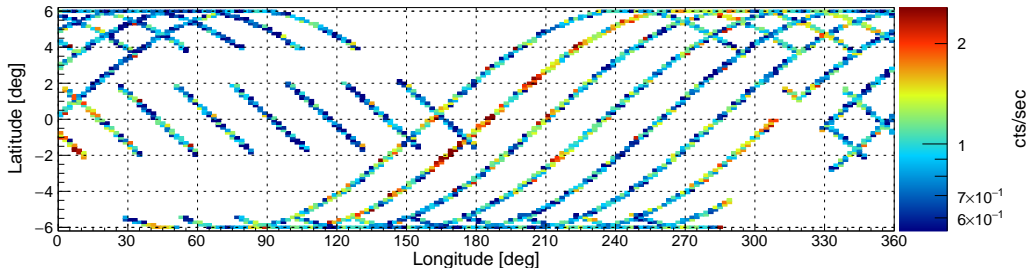
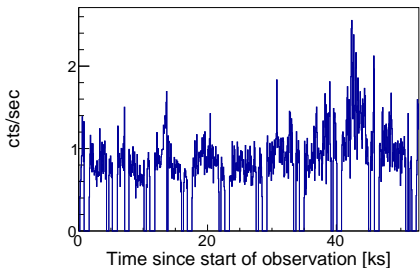


Target: GX_301m2 ID: 30101042002 Start: 2015-10-04 08:01:08 UTC Module: A

Filter options: SAA algorithm 2 (low-shield rate based using rms as evaluation metric), strict SAA cut

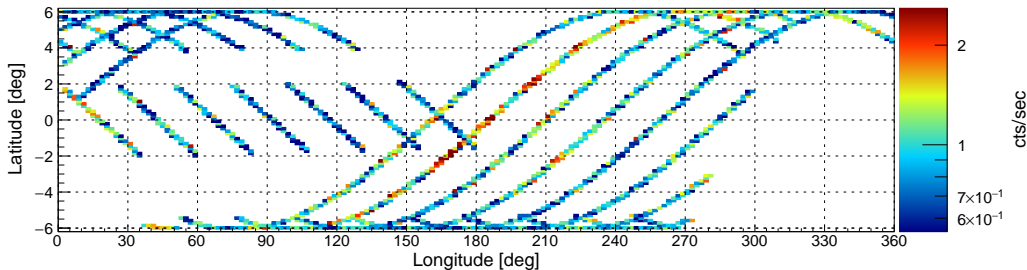
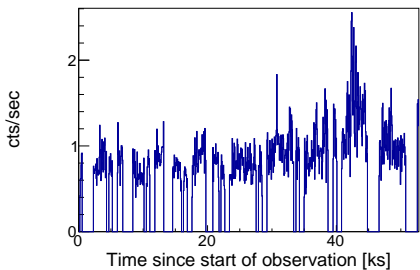
nucalcsaa options: nucalcsaa task not used!

Effective exposure time: 41071 sec (100.0%)



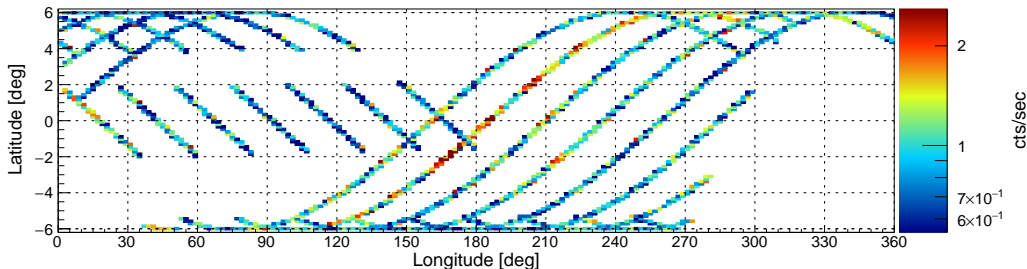
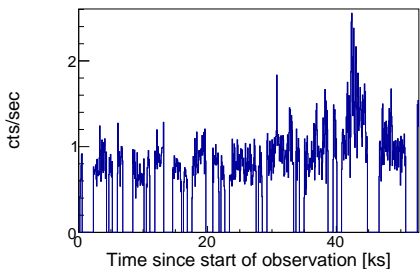
nucalcsaa options: --saacalc=2 --saamode=strict --tentacle=no

Effective exposure time: 35188 sec (85.68%)



nucalcsaa options: --saacalc=2 --saamode=strict --tentacle=yes

Effective exposure time: 35188 sec (85.68%)

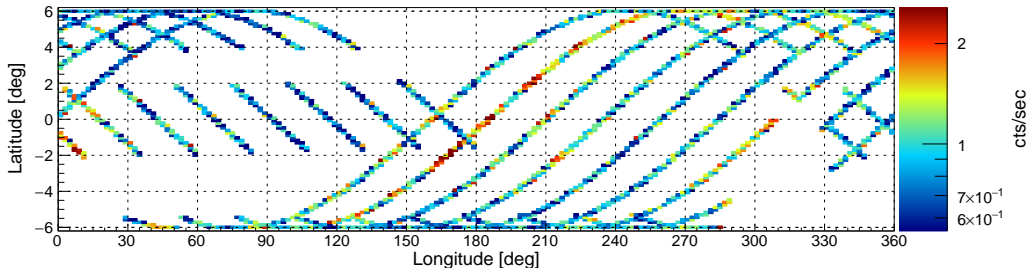
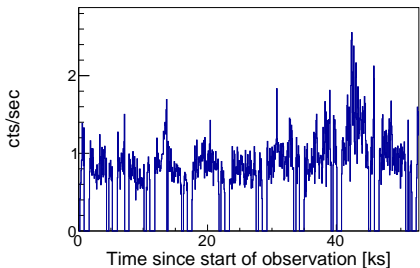


Target: GX_301m2 ID: 30101042002 Start: 2015-10-04 08:01:08 UTC Module: A

Filter options: SAA algorithm 3 (low-shield rate based using rms as evaluation metric), optimized SAA cut

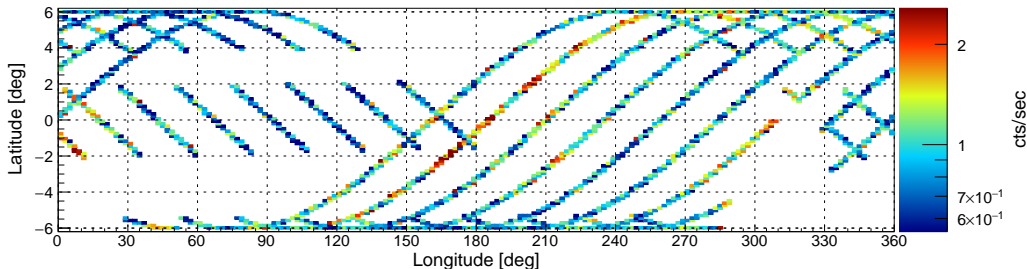
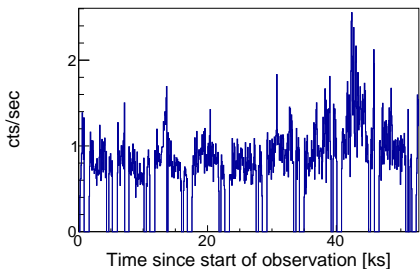
nucalcsaa options: nucalcsaa task not used!

Effective exposure time: 41071 sec (100.0%)



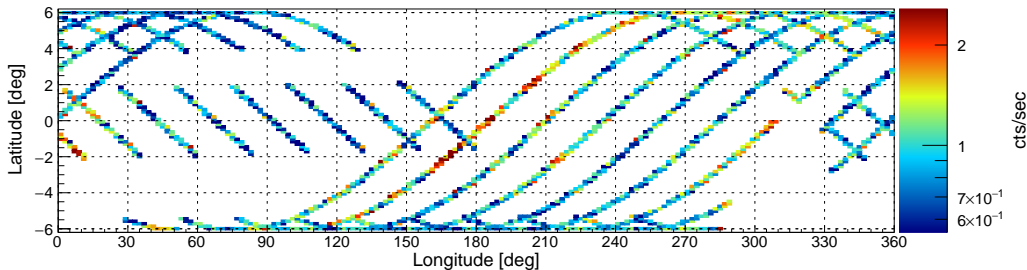
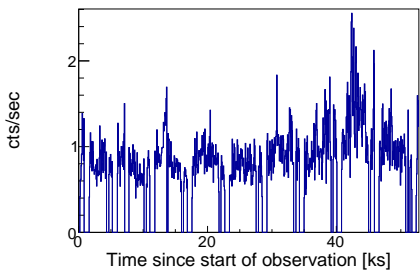
nucalcsaa options: --saacalc=3 --saamode=optimized --tentacle=no

Effective exposure time: 41071 sec (100%)



nucalcsaa options: --saacalc=3 --saamode=optimized --tentacle=yes

Effective exposure time: 41071 sec (100%)

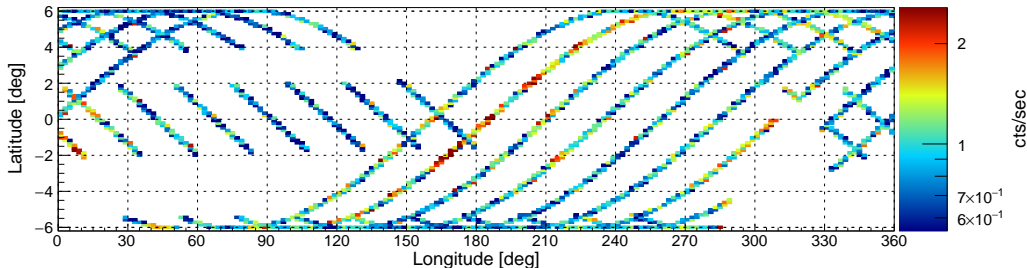
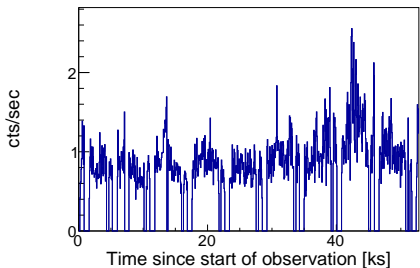


Target: GX_301m2 ID: 30101042002 Start: 2015-10-04 08:01:08 UTC Module: A

Filter options: SAA algorithm 3 (low-shield rate based using rms as evaluation metric), strict SAA cut

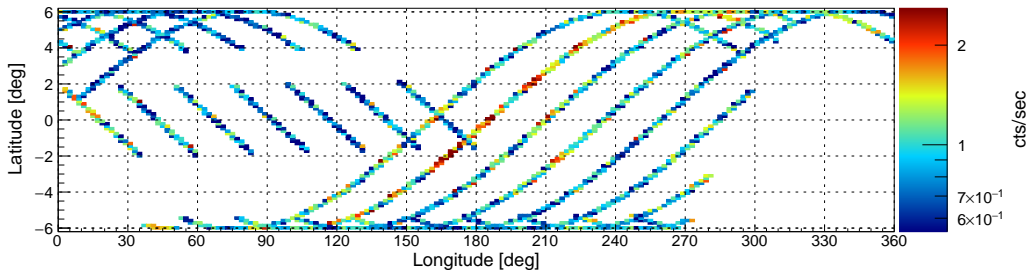
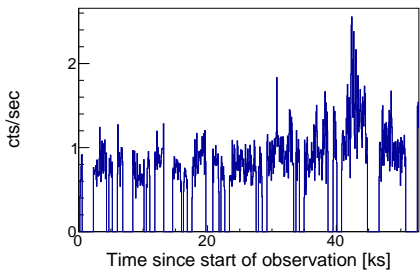
nucalcsaa options: nucalcsaa task not used!

Effective exposure time: 41071 sec (100.0%)



nucalcsaa options: --saacalc=3 --saamode=strict --tentacle=no

Effective exposure time: 35188 sec (85.68%)



nucalcsaa options: --saacalc=3 --saamode=strict --tentacle=yes

Effective exposure time: 35188 sec (85.68%)

